

Datasheet for ABIN2779131
anti-KLHDC8A antibody (Middle Region)[Go to Product page](#)[1 Image](#)[1 Publication](#)

Overview

Quantity:	100 µL
Target:	KLHDC8A
Binding Specificity:	Middle Region
Reactivity:	Human, Mouse, Rabbit, Cow, Guinea Pig, Dog, Rat, Horse
Host:	Rabbit
Clonality:	Polyclonal
Conjugate:	This KLHDC8A antibody is un-conjugated
Application:	Western Blotting (WB)

Product Details

Immunogen:	The immunogen is a synthetic peptide directed towards the middle region of human KLHDC8A
Sequence:	NQPTVLETAE AFHPGKNKWE ILPAMPTPRC ACSSIVVKNC LLAVGGVNQG
Predicted Reactivity:	Cow: 100%, Dog: 100%, Guinea Pig: 100%, Horse: 93%, Human: 100%, Mouse: 93%, Rabbit: 100%, Rat: 100%
Characteristics:	This is a rabbit polyclonal antibody against KLHDC8A. It was validated on Western Blot using a cell lysate as a positive control.
Purification:	Affinity Purified

Target Details

Target:	KLHDC8A
---------	---------

Target Details

Alternative Name:	KLHDC8A (KLHDC8A Products)
Background:	The function remains unknown. Alias Symbols: FLJ10748 Protein Size: 350
Molecular Weight:	39 kDa
Gene ID:	55220
NCBI Accession:	NM_018203 , NP_060673
UniProt:	Q8IYD2

Application Details

Application Notes:	Optimal working dilutions should be determined experimentally by the investigator.
Comment:	Antigen size: 350 AA
Restrictions:	For Research Use only

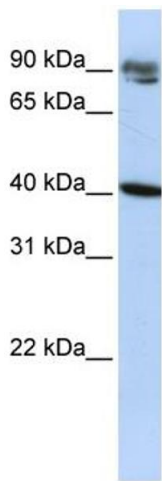
Handling

Format:	Liquid
Concentration:	Lot specific
Buffer:	Liquid. Purified antibody supplied in 1x PBS buffer with 0.09 % (w/v) sodium azide and 2 % sucrose.
Preservative:	Sodium azide
Precaution of Use:	This product contains Sodium azide: a POISONOUS AND HAZARDOUS SUBSTANCE which should be handled by trained staff only.
Handling Advice:	Avoid repeated freeze-thaw cycles.
Storage:	-20 °C
Storage Comment:	For short term use, store at 2-8°C up to 1 week. For long term storage, store at -20°C in small aliquots to prevent freeze-thaw cycles.

Publications

Product cited in:	Huang, Chen, Wu, Huang, He, Tang, Wang, Wang: "The zebrafish miR-462/miR-731 cluster is induced under hypoxic stress via hypoxia-inducible factor 1α and functions in cellular
-------------------	--

adaptations." in: **FASEB journal : official publication of the Federation of American Societies for Experimental Biology**, Vol. 29, Issue 12, pp. 4901-13, (2015) ([PubMed](#)).



Western Blotting

Image 1. WB Suggested Anti-KLHDC8A Antibody Titration: 0.2-1 ug/ml ELISA Titer: 1:1562500 Positive Control: HepG2 cell lysate