

Datasheet for ABIN2779132  
**anti-KLHDC8A antibody (C-Term)**[Go to Product page](#)

## 2 Images

## Overview

Quantity:	100 µL
Target:	KLHDC8A
Binding Specificity:	C-Term
Reactivity:	Human, Mouse, Rabbit, Cow, Guinea Pig, Dog, Rat, Horse
Host:	Rabbit
Clonality:	Polyclonal
Conjugate:	This KLHDC8A antibody is un-conjugated
Application:	Western Blotting (WB), Immunohistochemistry (IHC)

## Product Details

Immunogen:	The immunogen is a synthetic peptide directed towards the C terminal region of human KLHDC8A
Sequence:	PGKNKWEILP AMPTPRCACS SIVVKNCLLA VGGVNQGLSD AVEALCVSDS
Predicted Reactivity:	Cow: 100%, Dog: 93%, Guinea Pig: 100%, Horse: 93%, Human: 100%, Mouse: 93%, Rabbit: 100%, Rat: 100%
Characteristics:	This is a rabbit polyclonal antibody against KLHDC8A. It was validated on Western Blot using a cell lysate as a positive control.
Purification:	Protein A purified

## Target Details

Target:	KLHDC8A
---------	---------

## Target Details

Alternative Name:	KLHDC8A ( <a href="#">KLHDC8A Products</a> )
Background:	The function remains unknown. Protein Size: 350
Molecular Weight:	39 kDa
Gene ID:	55220
NCBI Accession:	<a href="#">NM_018203</a> , <a href="#">NP_060673</a>
UniProt:	<a href="#">Q8IYD2</a>

## Application Details

Application Notes:	Optimal working dilutions should be determined experimentally by the investigator.
Comment:	Antigen size: 350 AA
Restrictions:	For Research Use only

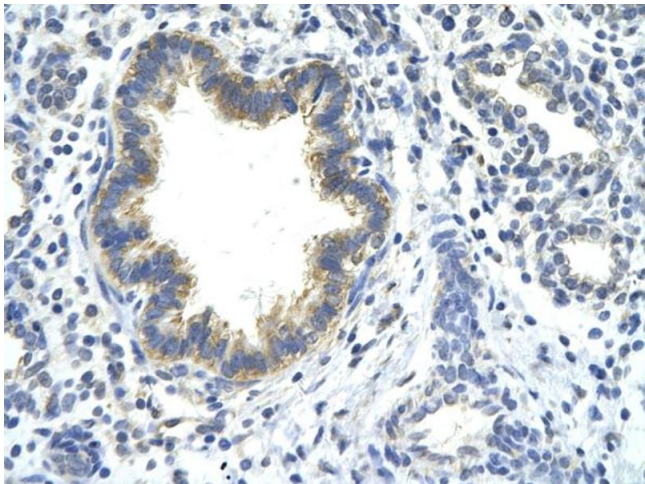
## Handling

Format:	Liquid
Concentration:	Lot specific
Buffer:	Liquid. Purified antibody supplied in 1x PBS buffer with 0.09 % (w/v) sodium azide and 2 % sucrose.
Preservative:	Sodium azide
Precaution of Use:	This product contains Sodium azide: a POISONOUS AND HAZARDOUS SUBSTANCE which should be handled by trained staff only.
Handling Advice:	Avoid repeated freeze-thaw cycles.
Storage:	-20 °C
Storage Comment:	For short term use, store at 2-8°C up to 1 week. For long term storage, store at -20°C in small aliquots to prevent freeze-thaw cycles.



#### Western Blotting

**Image 1.** WB Suggested Anti-KLHDC8A Antibody Titration:  
1.25ug/ml Positive Control: Jurkat cell lysate



#### Immunohistochemistry

**Image 2.** Rabbit Anti-KLHDC8A antibody Paraffin Embedded  
Tissue: Human Lung cell Cellular Data: bronchiole  
epithelium Antibody Concentration: 4.0-8.0 ug/ml  
Magnification: 400X