

Datasheet for ABIN2779141  
**anti-MATR3 antibody (N-Term)**[Go to Product page](#)

4 Images

3 Publications

## Overview

Quantity:	100 µL
Target:	MATR3
Binding Specificity:	N-Term
Reactivity:	Human, Mouse, Rat, Cow, Dog, Horse, Rabbit, Guinea Pig
Host:	Rabbit
Clonality:	Polyclonal
Conjugate:	This MATR3 antibody is un-conjugated
Application:	Western Blotting (WB), Immunohistochemistry (IHC)

## Product Details

Immunogen:	The immunogen is a synthetic peptide directed towards the N terminal region of human MATR3
Sequence:	MSKSFQQSSL SRDSQGHGRD LSAAGIGLLA AATQSLSMPA SLGRMNQGT A
Predicted Reactivity:	Cow: 93%, Dog: 93%, Guinea Pig: 93%, Horse: 93%, Human: 100%, Mouse: 93%, Rabbit: 93%, Rat: 93%
Characteristics:	This is a rabbit polyclonal antibody against MATR3. It was validated on Western Blot and immunohistochemistry.
Purification:	Protein A purified

## Target Details

Target:	MATR3
---------	-------

## Target Details

Alternative Name:	MATR3 ( <a href="#">MATR3 Products</a> )
Background:	<p>MATR3 is localized in the nuclear matrix. It may play a role in transcription or may interact with other nuclear matrix proteins to form the internal fibrogranular network. The protein encoded by this gene is localized in the nuclear matrix. It may play a role in transcription or may interact with other nuclear matrix proteins to form the internal fibrogranular network. Two transcript variants encoding the same protein have been identified for this gene.</p> <p>Alias Symbols: MPD2, VCPDM</p> <p>Protein Interaction Partner: RASD1, MATR3, UBC, HNRNPK, CEP250, AURKA, SUMO2, SUMO3, STAU1, LGR4, SUMO1, MDM2, RPA3, RPA2, RPA1, ERG, WWOX, EED, rev, PARK2, TARDBP, PAN2, ITGA4, IFIT2, FN1, MAP1LC3A, PTBP2, vpr, MAGOH, EIF4A3, PRKCDBP, NAA15, IARS2, SMU1, SARS2, STOML2, RRP7A, MYOF,</p> <p>Protein Size: 847</p>
Molecular Weight:	93 kDa
Gene ID:	9782
NCBI Accession:	<a href="#">NM_018834</a> , <a href="#">NP_061322</a>
UniProt:	<a href="#">P43243</a>

## Application Details

Application Notes:	Optimal working dilutions should be determined experimentally by the investigator.
Comment:	Antigen size: 847 AA
Restrictions:	For Research Use only

## Handling

Format:	Liquid
Concentration:	Lot specific
Buffer:	Liquid. Purified antibody supplied in 1x PBS buffer with 0.09 % (w/v) sodium azide and 2 % sucrose.
Preservative:	Sodium azide
Precaution of Use:	This product contains Sodium azide: a POISONOUS AND HAZARDOUS SUBSTANCE which should be handled by trained staff only.
Handling Advice:	Avoid repeated freeze-thaw cycles.

## Handling

---

Storage: -20 °C

---

Storage Comment: For short term use, store at 2-8°C up to 1 week. For long term storage, store at -20°C in small aliquots to prevent freeze-thaw cycles.

## Publications

---

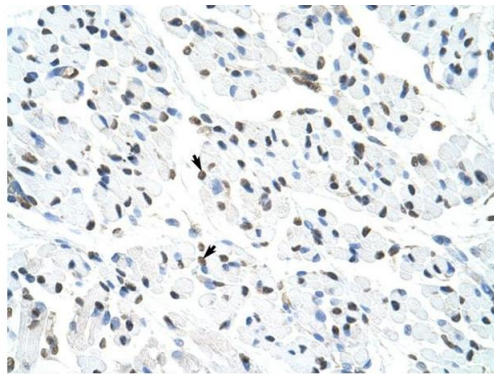
Product cited in: Sun, Zhou, Liu, Zhang, Chen, Pan, Ma, Liu, Du, Yang, Wang: "Inhibition of breast cancer cell survival by Xanthohumol via modulation of the Notch signaling pathway in vivo and in vitro." in: **Oncology letters**, Vol. 15, Issue 1, pp. 908-916, (2018) ([PubMed](#)).

Natsumeda, Maitani, Liu, Miyahara, Kaur, Chu, Zhang, Kahlert, Eberhart: "Targeting Notch Signaling and Autophagy Increases Cytotoxicity in Glioblastoma Neurospheres." in: **Brain pathology (Zurich, Switzerland)**, Vol. 26, Issue 6, pp. 713-723, (2015) ([PubMed](#)).

Meng, Su, Liu, Wang, Wang: "Rac1 contributes to cerebral ischemia reperfusion-induced injury in mice by regulation of Notch2." in: **Neuroscience**, Vol. 306, pp. 100-14, (2015) ([PubMed](#)).

Ma, Mao, Shen, Zheng, Li, Liu, Ni: "Atractylenolide I-mediated Notch pathway inhibition attenuates gastric cancer stem cell traits." in: **Biochemical and biophysical research communications**, Vol. 450, Issue 1, pp. 353-9, (2014) ([PubMed](#)).

Asnaghi, Lin, Lim, Lim, Tripathy, Wendeborn, Merbs, Handa, Sodhi, Bar, Eberhart: "Hypoxia promotes uveal melanoma invasion through enhanced Notch and MAPK activation." in: **PLoS ONE**, Vol. 9, Issue 8, pp. e105372, (2014) ([PubMed](#)).



Rabbit Anti-MATR3 Antibody  
Catalog Number: ARP40922  
Lot Number: QC10402  
Paraffin Embedded Tissue: Human Muscle  
Cells with Positive label: Skeletal muscle cells (Indicated with Arrows)  
Antibody Concentration: 4.0-8.0 µg/ml  
Magnification: 400X

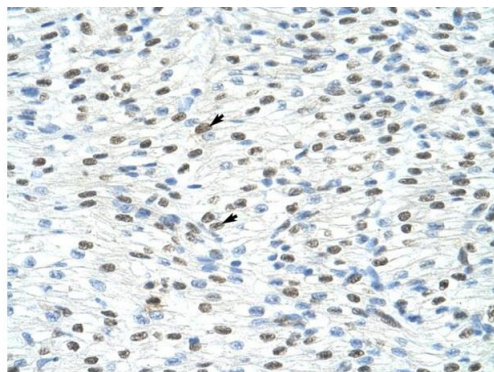


### Immunohistochemistry

**Image 1.** Rabbit Anti-MATR3 Antibody Paraffin Embedded  
Tissue: Human Muscle Cellular Data: Skeletal muscle cells  
Antibody Concentration: 4.0-8.0 ug/ml Magnification: 400X

### Western Blotting

**Image 2.** WB Suggested Anti-MATR3 Antibody Titration:  
1.25ug/ml Positive Control: Jurkat cell lysate MATR3 is  
strongly supported by BioGPS gene expression data to be  
expressed in Human Jurkat cells



Rabbit Anti-MATR3 Antibody  
Catalog Number: ARP40922  
Lot Number: QC10402  
Paraffin Embedded Tissue: Human Heart  
Cells with Positive label: Myocardial cells (Indicated with Arrows)  
Antibody Concentration: 4.0-8.0 µg/ml  
Magnification: 400X

### Immunohistochemistry

**Image 3.** Rabbit Anti-MATR3 Antibody Paraffin Embedded  
Tissue: Human Heart Cellular Data: Myocardial cells  
Antibody Concentration: 4.0-8.0 ug/ml Magnification: 400X

Please check the [product details page](#) for more images. Overall 4 images are available for ABIN2779141.