



[Go to Product page](#)

Datasheet for ABIN2779147
anti-RBM47 antibody (Middle Region)

7 Images

Overview

Quantity:	100 µL
Target:	RBM47
Binding Specificity:	Middle Region
Reactivity:	Human, Zebrafish (Danio rerio), Rat, Mouse, Dog, Cow, Guinea Pig, Horse, Rabbit
Host:	Rabbit
Clonality:	Polyclonal
Conjugate:	This RBM47 antibody is un-conjugated
Application:	Western Blotting (WB), Immunohistochemistry (IHC)

Product Details

Immunogen:	The immunogen is a synthetic peptide directed towards the middle region of human RBM47
Sequence:	HFTSREDAVH AMNNLNGTEL EGSCLEVTLA KPVDKEQYSR YQKAARGGGA
Predicted Reactivity:	Cow: 100%, Dog: 100%, Guinea Pig: 100%, Horse: 100%, Human: 100%, Mouse: 100%, Rabbit: 100%, Rat: 100%, Zebrafish: 93%
Characteristics:	This is a rabbit polyclonal antibody against RBM47. It was validated on Western Blot using a cell lysate as a positive control.
Purification:	Affinity Purified

Target Details

Target:	RBM47
---------	-------

Target Details

Alternative Name: RBM47 ([RBM47 Products](#))

Background: The function of this protein remains unknown.
Alias Symbols: DKFZp686F02235, FLJ20273, FLJ21344, FLJ21643, NET18
Protein Interaction Partner: HSFY1, C1orf94, RNF2, ELAVL1, UBC,
Protein Size: 524

Molecular Weight: 57 kDa

Gene ID: 54502

NCBI Accession: [NM_019027](#), [NP_061900](#)

Application Details

Application Notes: Optimal working dilutions should be determined experimentally by the investigator.

Comment: Antigen size: 524 AA

Restrictions: For Research Use only

Handling

Format: Liquid

Concentration: Lot specific

Buffer: Liquid. Purified antibody supplied in 1x PBS buffer with 0.09 % (w/v) sodium azide and 2 % sucrose.

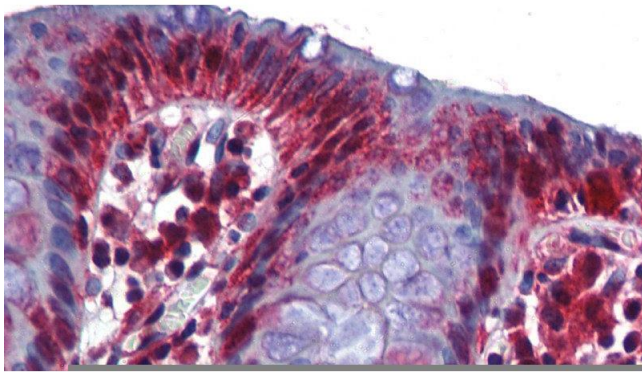
Preservative: Sodium azide

Precaution of Use: This product contains Sodium azide: a POISONOUS AND HAZARDOUS SUBSTANCE which should be handled by trained staff only.

Handling Advice: Avoid repeated freeze-thaw cycles.

Storage: -20 °C

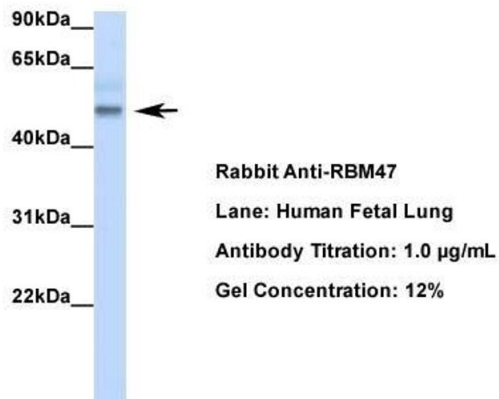
Storage Comment: For short term use, store at 2-8°C up to 1 week. For long term storage, store at -20°C in small aliquots to prevent freeze-thaw cycles.



Immunohistochemistry

Image 1. human Colon

RBM47



Western Blotting

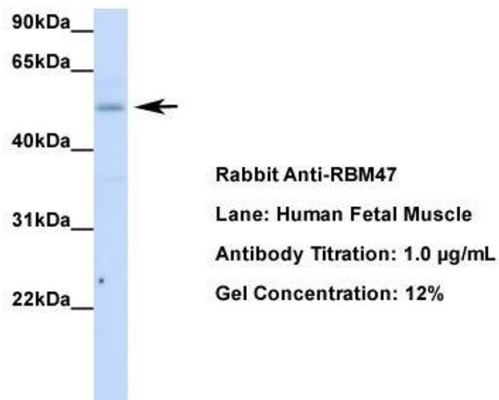
Image 2. Host: Rabbit

Target Name: RBM47

Sample Tissue: Human Fetal Lung

Antibody Dilution: 1.0 µg/mL

RBM47



Western Blotting

Image 3. Host: Rabbit

Target Name: RBM47

Sample Tissue: Human Fetal Muscle

Antibody Dilution: 1.0 µg/mL

Please check the [product details page](#) for more images. Overall 7 images are available for ABIN2779147.