



Datasheet for ABIN2779234  
**anti-TOX2 antibody (N-Term)**



[Go to Product page](#)

2 Images

Overview

Quantity:	100 µL
Target:	TOX2
Binding Specificity:	N-Term
Reactivity:	Human, Mouse, Rat, Dog, Pig, Horse, Rabbit, Guinea Pig
Host:	Rabbit
Clonality:	Polyclonal
Conjugate:	This TOX2 antibody is un-conjugated
Application:	Western Blotting (WB), Immunohistochemistry (IHC)

Product Details

Immunogen:	The immunogen is a synthetic peptide directed towards the N terminal region of human C20ORF100
Sequence:	TSQTYNGQSE NNEDYEIPPI TPPNLPEPSL LHLGDHEASY HSLCHGLTPN
Predicted Reactivity:	Dog: 100%, Guinea Pig: 93%, Horse: 100%, Human: 100%, Mouse: 100%, Pig: 100%, Rabbit: 93%, Rat: 100%
Characteristics:	This is a rabbit polyclonal antibody against C20ORF100. It was validated on Western Blot and immunohistochemistry.
Purification:	Affinity Purified

Target Details

Target:	TOX2
---------	------

## Target Details

---

Alternative Name:	C20ORF100 ( <a href="#">TOX2 Products</a> )
Background:	<p>This gene, which is located on chromosome 20, is predicted to encode for a signal protein with unknown function.</p> <p>Alias Symbols: GCX-1, C20orf100, dJ49503.1, dJ1108D11.2</p> <p>Protein Interaction Partner: APP, UBC, ZNF461,</p> <p>Protein Size: 464</p>
Molecular Weight:	49 kDa
Gene ID:	84969
NCBI Accession:	<a href="#">NM_032883</a> , <a href="#">NP_116272</a>
UniProt:	<a href="#">Q96NM4</a>

## Application Details

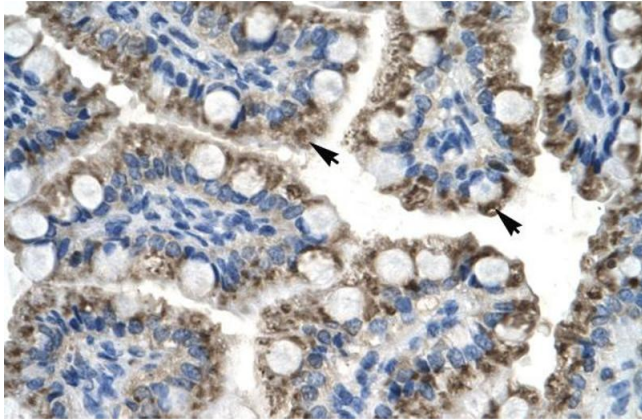
---

Application Notes:	Optimal working dilutions should be determined experimentally by the investigator.
Comment:	Antigen size: 464 AA
Restrictions:	For Research Use only

## Handling

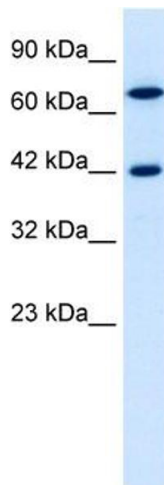
---

Format:	Liquid
Concentration:	Lot specific
Buffer:	Liquid. Purified antibody supplied in 1x PBS buffer with 0.09 % (w/v) sodium azide and 2 % sucrose.
Preservative:	Sodium azide
Precaution of Use:	This product contains Sodium azide: a POISONOUS AND HAZARDOUS SUBSTANCE which should be handled by trained staff only.
Handling Advice:	Avoid repeated freeze-thaw cycles.
Storage:	-20 °C
Storage Comment:	For short term use, store at 2-8°C up to 1 week. For long term storage, store at -20°C in small aliquots to prevent freeze-thaw cycles.



### Immunohistochemistry

**Image 1.** Rabbit Anti-C20orf100 Antibody Catalog Number: ARP30008 Paraffin Embedded Tissue: Human Intestine Cellular Data: Epithelial cells of intestinal villas Antibody Concentration: 4.0-8.0 ug/ml Magnification: 400X



### Western Blotting

**Image 2.** WB Suggested Anti-C20ORF100 Antibody Titration: 0.2-1 ug/ml ELISA Titer: 1:312500 Positive Control: Jurkat cell lysate