



[Go to Product page](#)

Datasheet for ABIN2779235  
**anti-FIZ1 antibody (C-Term)**

2 Images

Overview

Quantity:	100 µL
Target:	FIZ1
Binding Specificity:	C-Term
Reactivity:	Human, Dog, Pig, Horse
Host:	Rabbit
Clonality:	Polyclonal
Conjugate:	This FIZ1 antibody is un-conjugated
Application:	Western Blotting (WB), Immunohistochemistry (IHC)

Product Details

Immunogen:	The immunogen is a synthetic peptide directed towards the C terminal region of human FLJ14768
Sequence:	HCGALYAALA ALEEHRVSH GEGGGEEAAA AAREREPASG EPPSGSGRGK
Predicted Reactivity:	Dog: 86%, Horse: 79%, Human: 100%, Pig: 83%
Characteristics:	This is a rabbit polyclonal antibody against FLJ14768. It was validated on Western Blot and immunohistochemistry.
Purification:	Protein A purified

Target Details

Target:	FIZ1
---------	------

## Target Details

---

Abstract:	<a href="#">FIZ1 Products</a>
Background:	<p>FLJ14768 is homologous to mouse and bovine Fiz1 (flt-3 interacting zinc finger). It interacts with NRL (neural retina leucine zipper). Possible role for Fiz1 as a transcriptional repressor.</p> <p>Alias Symbols: ZNF798, FLJ14768</p> <p>Protein Interaction Partner: NRL, FLT3,</p> <p>Protein Size: 496</p>
Molecular Weight:	52 kDa
Gene ID:	84922
NCBI Accession:	<a href="#">NM_032836</a> , <a href="#">NP_116225</a>
UniProt:	<a href="#">Q96SL8</a>

## Application Details

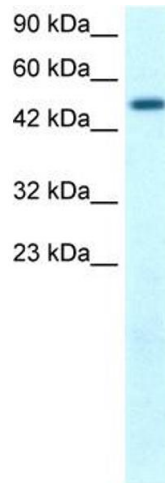
---

Application Notes:	Optimal working dilutions should be determined experimentally by the investigator.
Comment:	Antigen size: 496 AA
Restrictions:	For Research Use only

## Handling

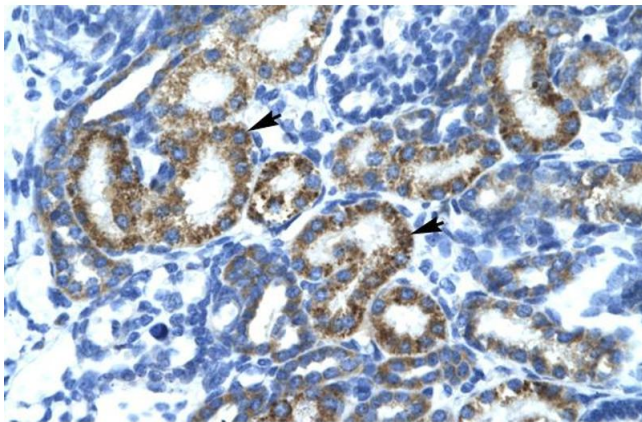
---

Format:	Liquid
Concentration:	Lot specific
Buffer:	Liquid. Purified antibody supplied in 1x PBS buffer with 0.09 % (w/v) sodium azide and 2 % sucrose.
Preservative:	Sodium azide
Precaution of Use:	This product contains Sodium azide: a POISONOUS AND HAZARDOUS SUBSTANCE which should be handled by trained staff only.
Handling Advice:	Avoid repeated freeze-thaw cycles.
Storage:	-20 °C
Storage Comment:	For short term use, store at 2-8°C up to 1 week. For long term storage, store at -20°C in small aliquots to prevent freeze-thaw cycles.



### Western Blotting

**Image 1.** WB Suggested Anti-FLJ14768 Antibody Titration: 1.25ug/ml ELISA Titer: 1:62500 Positive Control: Human Kidney



### Immunohistochemistry

**Image 2.** Rabbit Anti-FLJ14768 Antibody Catalog Number: ARP30009 Paraffin Embedded Tissue: Human Kidney Cellular Data: Epithelial cells of renal tubule Antibody Concentration: 4.0-8.0 ug/ml Magnification: 400X