

Datasheet for ABIN2779247
anti-HES7 antibody (Middle Region)

3 Images

[Go to Product page](#)

Overview

Quantity:	100 µL
Target:	HES7
Binding Specificity:	Middle Region
Reactivity:	Human, Mouse, Rat, Rabbit, Cow, Dog, Guinea Pig, Horse
Host:	Rabbit
Clonality:	Polyclonal
Conjugate:	This HES7 antibody is un-conjugated
Application:	Western Blotting (WB), Immunohistochemistry (IHC)

Product Details

Immunogen:	The immunogen is a synthetic peptide directed towards the middle region of human HES7
Sequence:	VGYLRERSRV EPPGVPRSPV QDAKALASCY LSGFRECLLR LAAlAHDasP
Predicted Reactivity:	Cow: 92%, Dog: 92%, Guinea Pig: 92%, Horse: 92%, Human: 100%, Mouse: 92%, Rabbit: 92%, Rat: 92%
Characteristics:	This is a rabbit polyclonal antibody against HES7. It was validated on Western Blot and immunohistochemistry.
Purification:	Affinity Purified

Target Details

Target:	HES7
---------	------

Target Details

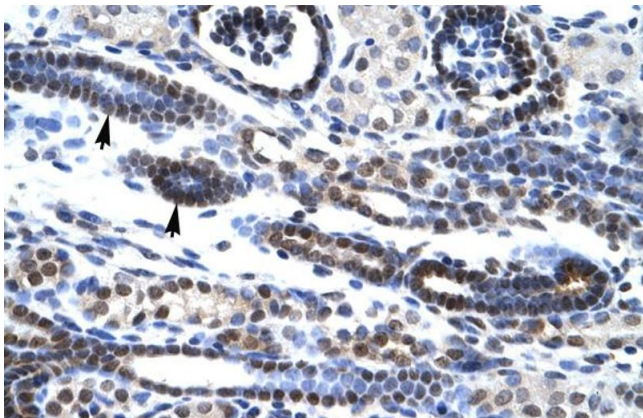
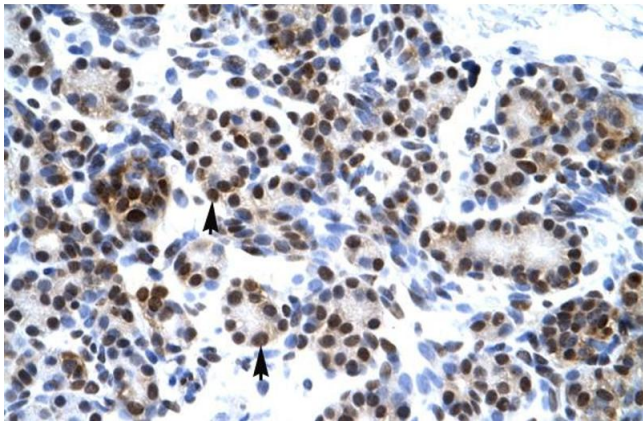
Alternative Name:	HES7 (HES7 Products)
Background:	<p>In mouse, Hes7 expression is associated with somitogenesis and is controlled by Notch signaling.</p> <p>Alias Symbols: SCDO4, bHLHb37</p> <p>Protein Interaction Partner: UBC,</p> <p>Protein Size: 225</p>
Molecular Weight:	25 kDa
Gene ID:	84667
NCBI Accession:	NM_032580 , NP_115969
UniProt:	Q9BYE0

Application Details

Application Notes:	Optimal working dilutions should be determined experimentally by the investigator.
Comment:	Antigen size: 225 AA
Restrictions:	For Research Use only

Handling

Format:	Liquid
Concentration:	Lot specific
Buffer:	Liquid. Purified antibody supplied in 1x PBS buffer with 0.09 % (w/v) sodium azide and 2 % sucrose.
Preservative:	Sodium azide
Precaution of Use:	This product contains Sodium azide: a POISONOUS AND HAZARDOUS SUBSTANCE which should be handled by trained staff only.
Handling Advice:	Avoid repeated freeze-thaw cycles.
Storage:	-20 °C
Storage Comment:	For short term use, store at 2-8°C up to 1 week. For long term storage, store at -20°C in small aliquots to prevent freeze-thaw cycles.



Immunohistochemistry

Image 1. Rabbit Anti-HES7 Antibody Catalog Number: ARP30035 Paraffin Embedded Tissue: Human Pancreas Cellular Data: Epithelial cells of pancreatic acinus Antibody Concentration: 4.0-8.0 ug/ml Magnification: 400X

Western Blotting

Image 2. WB Suggested Anti-HES7 Antibody Titration: 0.2-1 ug/ml ELISA Titer: 1:312500 Positive Control: Human heart

Immunohistochemistry

Image 3. Rabbit Anti-HES7 Antibody Catalog Number: ARP30035 Paraffin Embedded Tissue: Human Kidney Cellular Data: Epithelial cells of renal tubule Antibody Concentration: 4.0-8.0 ug/ml Magnification: 400X