

Datasheet for ABIN2779250

anti-SUPT3H/SPT3 antibody (N-Term)**2** Images[Go to Product page](#)

Overview

Quantity:	100 µL
Target:	SUPT3H/SPT3 (SUPT3H)
Binding Specificity:	N-Term
Reactivity:	Human, Mouse, Dog, Pig, Cow, Rabbit, Rat, Goat, Guinea Pig, Horse
Host:	Rabbit
Clonality:	Polyclonal
Conjugate:	This SUPT3H/SPT3 antibody is un-conjugated
Application:	Western Blotting (WB), Immunohistochemistry (IHC)

Product Details

Immunogen:	The immunogen is a synthetic peptide directed towards the N terminal region of human SUPT3H
Sequence:	MRKDKKKLRR LLKYMFIRDY KSKIVKGIDE DDLLEDKLSG SNNANKRQKI
Predicted Reactivity:	Cow: 100%, Dog: 100%, Goat: 100%, Guinea Pig: 86%, Horse: 100%, Human: 100%, Mouse: 93%, Pig: 100%, Rabbit: 86%, Rat: 93%
Characteristics:	This is a rabbit polyclonal antibody against SUPT3H. It was validated on Western Blot and immunohistochemistry.
Purification:	Protein A purified

Target Details

Target:	SUPT3H/SPT3 (SUPT3H)
---------	----------------------

Target Details

Alternative Name:	SUPT3H (SUPT3H Products)
Background:	<p>SUPT3H is a component of the multiprotein SPT-ADA-GCN5 acetyltransferase (SAGA) complex that integrates proteins with transcription coactivator/adaptor functions (ADAs and GCN5), histone acetyltransferase activity (GCN5), and core promoter-selective functions (SPTs) involving interactions with the TATA-binding protein (TBP).</p> <p>Alias Symbols: SPT3, SPT3L</p> <p>Protein Interaction Partner: KAT2B, TADA1, CCDC101, SAP130, TADA3, SUPT7L, TRRAP, TCF3, TADA2A, KAT2A, TADA2B, TAF12, SUMO2, PYGO2, MED16, MED13, MED12, MED17, TAF10, TAF9, MED1, MYC, TP53, ATXN7, USP22, ATXN7L3, TAF5L, SF3B3, TAF6L, DDB2, DDB1, TAF5, TAF4,</p> <p>Protein Size: 317</p>
Molecular Weight:	36 kDa
Gene ID:	8464
NCBI Accession:	NM_003599 , NP_003590
UniProt:	O75486

Application Details

Application Notes:	Optimal working dilutions should be determined experimentally by the investigator.
Comment:	Antigen size: 317 AA
Restrictions:	For Research Use only

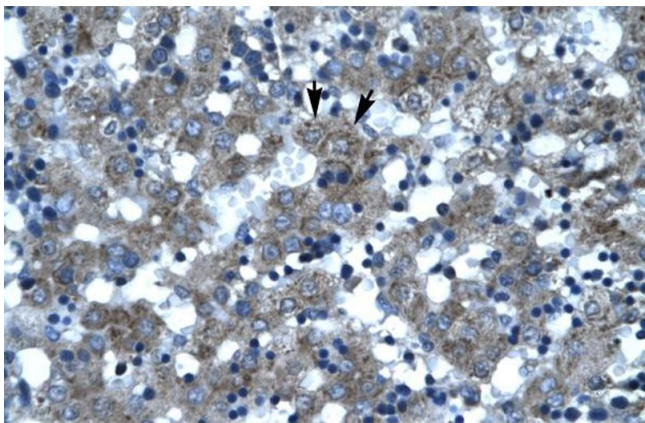
Handling

Format:	Liquid
Concentration:	Lot specific
Buffer:	Liquid. Purified antibody supplied in 1x PBS buffer with 0.09 % (w/v) sodium azide and 2 % sucrose.
Preservative:	Sodium azide
Precaution of Use:	This product contains Sodium azide: a POISONOUS AND HAZARDOUS SUBSTANCE which should be handled by trained staff only.
Handling Advice:	Avoid repeated freeze-thaw cycles.

Handling

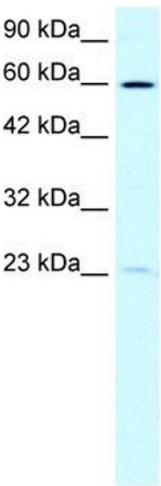
Storage:	-20 °C
Storage Comment:	For short term use, store at 2-8°C up to 1 week. For long term storage, store at -20°C in small aliquots to prevent freeze-thaw cycles.

Images



Immunohistochemistry

Image 1. Rabbit Anti-SUPT3H Antibody Catalog Number: ARP30038 Paraffin Embedded Tissue: Human Liver Cellular Data: Hepatocytes Antibody Concentration: 4.0-8.0 ug/ml Magnification: 400X



Western Blotting

Image 2. WB Suggested Anti-SUPT3H Antibody Titration: 0.4ug/ml ELISA Titer: 1:1562500 Positive Control: HepG2 cell lysate SUPT3H is supported by BioGPS gene expression data to be expressed in HepG2