

Datasheet for ABIN2779260
anti-ZNF414 antibody (C-Term)[Go to Product page](#)

1 Image

Overview

Quantity:	100 µL
Target:	ZNF414
Binding Specificity:	C-Term
Reactivity:	Human, Dog, Horse, Mouse, Rabbit, Rat, Cow
Host:	Rabbit
Clonality:	Polyclonal
Conjugate:	This ZNF414 antibody is un-conjugated
Application:	Western Blotting (WB)

Product Details

Immunogen:	The immunogen is a synthetic peptide directed towards the C-terminal region of Human ZNF414
Sequence:	LPYLNPAFPG LSPPLRLPFL AAAPGPPASS AAVWKKSQGA GSSPRRPQGG
Predicted Reactivity:	Cow: 100%, Dog: 100%, Horse: 93%, Human: 100%, Mouse: 100%, Rabbit: 100%, Rat: 100%
Characteristics:	This is a rabbit polyclonal antibody against ZNF414. It was validated on Western Blot.
Purification:	Affinity Purified

Target Details

Target:	ZNF414
Alternative Name:	ZNF414 (ZNF414 Products)

Target Details

Background: ZNF414 may be involved in transcriptional regulation.
Alias Symbols: ZFP414
Protein Interaction Partner: GOLGA2, TERF2IP, TEX11,
Protein Size: 390

Molecular Weight: 42 kDa

Gene ID: 84330

NCBI Accession: [NM_032370](#), [NP_115746](#)

UniProt: [A8MY94](#)

Application Details

Application Notes: Optimal working dilution should be determined by the investigator.

Restrictions: For Research Use only

Handling

Format: Liquid

Concentration: 1 mg/mL

Buffer: Liquid. Purified antibody supplied in 1x PBS buffer with 0.09 % (w/v) sodium azide and 2 % sucrose.

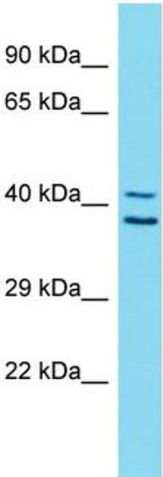
Preservative: Sodium azide

Precaution of Use: This product contains Sodium azide: a POISONOUS AND HAZARDOUS SUBSTANCE which should be handled by trained staff only.

Handling Advice: Avoid repeat freeze-thaw cycles.

Storage: -20 °C

Storage Comment: For short term use, store at 2-8°C up to 1 week. For long term storage, store at -20°C in small aliquots to prevent freeze-thaw cycles.



Western Blotting

Image 1. Host: Rabbit Target Name: ZNF414 Sample Type: Stomach Tumor lysates Antibody Dilution: 1.0ug/ml