

Datasheet for ABIN2779263  
**anti-EEA1 antibody (N-Term)**[Go to Product page](#)

3 Images

1 Publication

## Overview

Quantity:	100 µL
Target:	EEA1
Binding Specificity:	N-Term
Reactivity:	Human, Mouse, Rat, Dog, Horse, Rabbit, Cow, Guinea Pig
Host:	Rabbit
Clonality:	Polyclonal
Conjugate:	This EEA1 antibody is un-conjugated
Application:	Western Blotting (WB), Immunohistochemistry (IHC), Immunoprecipitation (IP)

## Product Details

Immunogen:	The immunogen is a synthetic peptide directed towards the N terminal region of human EEA1
Sequence:	LTENLLKKEQ DYTKLEEKHN EESVSKKNIQ ATLHQKDLDC QQLQSRLSAS
Predicted Reactivity:	Cow: 92%, Dog: 75%, Guinea Pig: 92%, Horse: 92%, Human: 100%, Mouse: 92%, Rabbit: 85%, Rat: 92%
Characteristics:	This is a rabbit polyclonal antibody against EEA1. It was validated on Western Blot using a cell lysate as a positive control.
Purification:	Affinity Purified

## Target Details

Target:	EEA1
---------	------

## Target Details

Alternative Name:	EEA1 ( <a href="#">EEA1 Products</a> )
Background:	<p>EEA1 is involved in neuronal synaptic vesicle function and axonal transport and growth. EEA1 may undergo calcium-dependent conformational changes that are required for binding to SNAP-25.</p> <p>Alias Symbols: MST105, ZFYVE2, MSTP105</p> <p>Protein Interaction Partner: UBC, RNF2, BMI1, CFTR, ERBB2, VCP, EEA1, RAB5A, TNK2, RABEP1, RABGEF1, PDCD6IP, PXX, HDAC6, ZFYVE16, USO1, STX6, RAB22A, STX12, TOM1, RAB5C, MAPK14, RAB5B, IGF1R, NSF,</p> <p>Protein Size: 1411</p>
Molecular Weight:	162 kDa
Gene ID:	8411
NCBI Accession:	<a href="#">NM_003566</a> , <a href="#">NP_003557</a>
UniProt:	<a href="#">Q15075</a>
Pathways:	<a href="#">Toll-Like Receptors Cascades</a>

## Application Details

Application Notes:	Optimal working dilutions should be determined experimentally by the investigator.
Comment:	Antigen size: 1411 AA
Restrictions:	For Research Use only

## Handling

Format:	Liquid
Concentration:	Lot specific
Buffer:	Liquid. Purified antibody supplied in 1x PBS buffer with 0.09 % (w/v) sodium azide and 2 % sucrose.
Preservative:	Sodium azide
Precaution of Use:	This product contains Sodium azide: a POISONOUS AND HAZARDOUS SUBSTANCE which should be handled by trained staff only.
Handling Advice:	Avoid repeated freeze-thaw cycles.
Storage:	-20 °C

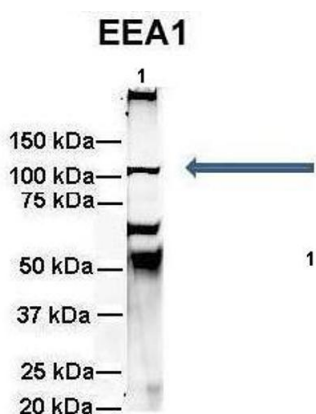
## Handling

Storage Comment: For short term use, store at 2-8°C up to 1 week. For long term storage, store at -20°C in small aliquots to prevent freeze-thaw cycles.

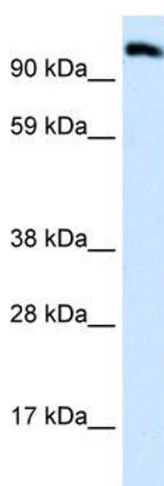
## Publications

Product cited in: Huang, Chen, Wu, Huang, He, Tang, Wang, Wang: "The zebrafish miR-462/miR-731 cluster is induced under hypoxic stress via hypoxia-inducible factor 1 $\alpha$  and functions in cellular adaptations." in: **FASEB journal : official publication of the Federation of American Societies for Experimental Biology**, Vol. 29, Issue 12, pp. 4901-13, (2015) ([PubMed](#)).

## Images



See Other Application 1 Data and Customer Feedback for more information

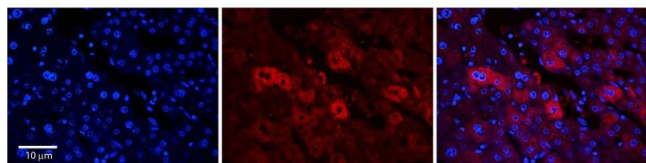


### Immunoprecipitation

**Image 1.** Amount and Sample Type : 500 ug rat brain homogenate Amount of IP Antibody : 6 ug Primary Antibody : EEA1 Primary Antibody Dilution : 1:500 Secondary Antibody : Goat anti-rabbit Alexa-Fluor 594 Secondary Antibody Dilution : 1:5000 Gene Name : EEA1 Submitted by : Dr. Yuzhi Chen, University of Arkansas for Medical Science

### Western Blotting

**Image 2.** WB Suggested Anti-EEA1 Antibody Titration: 0.06ug/ml ELISA Titer: 1:312500 Positive Control: Human Placenta



### Immunohistochemistry

**Image 3.** Rabbit Anti-EEA1 Antibody Formalin Fixed Paraffin Embedded Tissue: Human Adult Liver Observed Staining: Cytoplasm in hepatocytes, moderate signal, moderate tissue distribution Primary Antibody Concentration: 1:100 Secondary Antibody: Donkey anti-Rabbit-Cy3 Secondary Antibody Concentration: 1:200 Magnification: 20X Exposure Time: 0.5 – 2.0 sec Protocol located in Reviews and Data.