

Datasheet for ABIN2779266 anti-L3MBTL2 antibody (C-Term)



[Go to Product page](#)

2 Images

1 Publication

Overview

Quantity:	100 µL
Target:	L3MBTL2
Binding Specificity:	C-Term
Reactivity:	Human, Rat, Mouse, Dog, Cow, Horse, Rabbit, Guinea Pig
Host:	Rabbit
Clonality:	Polyclonal
Conjugate:	This L3MBTL2 antibody is un-conjugated
Application:	Western Blotting (WB), Immunohistochemistry (IHC)

Product Details

Immunogen:	The immunogen is a synthetic peptide directed towards the C terminal region of human L3MBTL2
Sequence:	EYDQWVDCES PDIYPVGWCE LTGYQLQPPV AAEPATPLKA KEATKKKKKQ
Predicted Reactivity:	Cow: 100%, Dog: 100%, Guinea Pig: 100%, Horse: 100%, Human: 100%, Mouse: 80%, Rabbit: 100%, Rat: 86%
Characteristics:	This is a rabbit polyclonal antibody against L3MBTL2. It was validated on Western Blot and immunohistochemistry.
Purification:	Protein A purified

Target Details

Target:	L3MBTL2
---------	---------

Target Details

Alternative Name:	L3MBTL2 (L3MBTL2 Products)
Background:	<p>L3MBTL2 contains 1 FCS-type zinc finger and 4 MBT repeats. It is putative Polycomb group (PcG) protein. PcG proteins maintain the transcriptionally repressive state of genes, probably via a modification of chromatin, rendering it heritably changed in its expressibility. Its association with a chromatin remodeling complex suggests that it may contribute to prevent expression of genes that trigger the cell into mitosis.</p> <p>Alias Symbols: H-I(3)mbt-I, L3MBT</p> <p>Protein Interaction Partner: TRIM42, STAC3, PHF10, TBC1D9B, PAICS, AES, SUMO2, SUMO1, PIAS1, HIST1H4A, HIST1H3A, RNF2, MPP3, PCGF6, RYBP, YAF2, SMARCAD1, HIST4H4, CBX3, HIST3H3, E2F6, Lin54, HDAC3, MEAF6, STAM2, RB1,</p> <p>Protein Size: 705</p>
Molecular Weight:	79 kDa
Gene ID:	83746
NCBI Accession:	NM_031488 , NP_113676
UniProt:	Q969R5

Application Details

Application Notes:	Optimal working dilutions should be determined experimentally by the investigator.
Comment:	Antigen size: 705 AA
Restrictions:	For Research Use only

Handling

Format:	Liquid
Concentration:	Lot specific
Buffer:	Liquid. Purified antibody supplied in 1x PBS buffer with 0.09 % (w/v) sodium azide and 2 % sucrose.
Preservative:	Sodium azide
Precaution of Use:	This product contains Sodium azide: a POISONOUS AND HAZARDOUS SUBSTANCE which should be handled by trained staff only.
Handling Advice:	Avoid repeated freeze-thaw cycles.

Handling

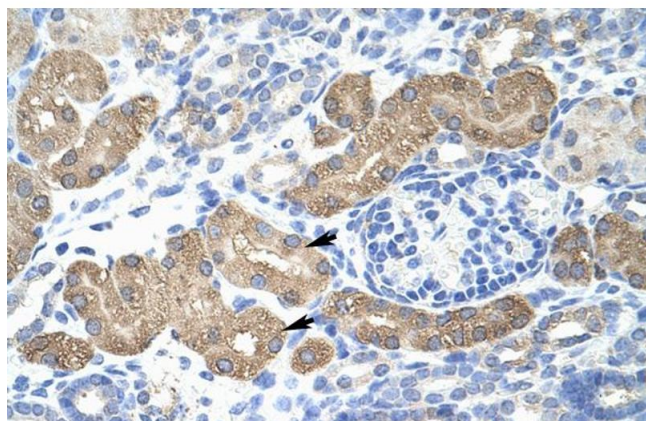
Storage: -20 °C

Storage Comment: For short term use, store at 2-8°C up to 1 week. For long term storage, store at -20°C in small aliquots to prevent freeze-thaw cycles.

Publications

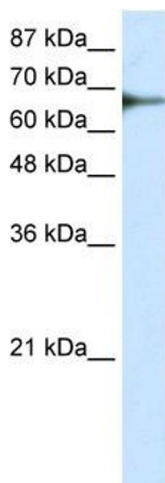
Product cited in: Yomo, Hongo, Kuroyanagi, Kobayashi: "Parkinsonism and midbrain dysfunction after shunt placement for obstructive hydrocephalus." in: **Journal of clinical neuroscience : official journal of the Neurosurgical Society of Australasia**, Vol. 13, Issue 3, pp. 373-8, (2006) ([PubMed](#)).

Images



Immunohistochemistry

Image 1. Rabbit Anti-L3MBTL2 Antibody Catalog Number: ARP30080 Paraffin Embedded Tissue: Human Kidney Cellular Data: Epithelial cells of renal tubule Antibody Concentration: 4.0-8.0 ug/ml Magnification: 400X



Western Blotting

Image 2. WB Suggested Anti-L3MBTL2 Antibody Titration: 0.625ug/ml ELISA Titer: 1:312500 Positive Control: Transfected 293T