

Datasheet for ABIN2779273  
**anti-GFI1B antibody (N-Term)**

## 3 Images

[Go to Product page](#)

## Overview

Quantity:	100 µL
Target:	GFI1B
Binding Specificity:	N-Term
Reactivity:	Human, Mouse, Rat, Cow, Dog, Horse, Goat, Pig
Host:	Rabbit
Clonality:	Polyclonal
Conjugate:	This GFI1B antibody is un-conjugated
Application:	Western Blotting (WB), Immunohistochemistry (IHC)

## Product Details

Immunogen:	The immunogen is a synthetic peptide directed towards the N terminal region of human GFI1B
Sequence:	MPRSFLVKSK MAHTYHQPRV QEDEPLWPPA LTPVPRDQAP SNSPVLSTLF
Predicted Reactivity:	Cow: 83%, Dog: 100%, Goat: 83%, Horse: 100%, Human: 100%, Mouse: 83%, Pig: 93%, Rat: 82%
Characteristics:	This is a rabbit polyclonal antibody against GFI1B. It was validated on Western Blot and immunohistochemistry.
Purification:	Affinity Purified

## Target Details

Target:	GFI1B
Alternative Name:	GFI1B ( <a href="#">GFI1B Products</a> )

## Target Details

Background:	<p>GFI1B acts in the late stage of erythroid differentiation as a transcriptional repressor. GATA-1 and NF-Y both contribute to erythroid-specific transcriptional activation of the Gfi-1B promoter. This zinc finger protein mediates erythroid expansion and has a role in normal erythropoiesis.</p> <p>Protein Interaction Partner: ZNRD1, EFEMP2, NSMF, IFFO1, RCHY1, TENC1, HECW1, MID2, CCDC85B, COPS5, RUNDC3A, PDLIM5, FBLN5, MATR3, PDE4DIP, BRE, PICK1, HGS, DNAJA3, KALRN, BECN1, LTBP4, VSNL1, TRIP6, TRAF1, TMF1, TAF1, ATXN2, TRIM27, PSMA3, NOTCH1, NELL2, NELL1, LAMB1, JAG2, HSPG2, H</p> <p>Protein Size: 330</p>
Molecular Weight:	38 kDa
Gene ID:	8328
NCBI Accession:	<a href="#">NM_004188</a> , <a href="#">NP_004179</a>
UniProt:	<a href="#">Q5VTD9</a>
Pathways:	<a href="#">Cellular Response to Molecule of Bacterial Origin</a>

## Application Details

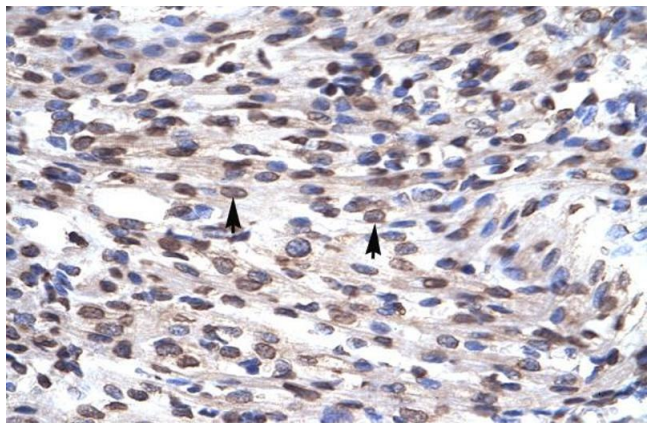
Application Notes:	Optimal working dilutions should be determined experimentally by the investigator.
Comment:	Antigen size: 330 AA
Restrictions:	For Research Use only

## Handling

Format:	Liquid
Concentration:	Lot specific
Buffer:	Liquid. Purified antibody supplied in 1x PBS buffer with 0.09 % (w/v) sodium azide and 2 % sucrose.
Preservative:	Sodium azide
Precaution of Use:	This product contains Sodium azide: a POISONOUS AND HAZARDOUS SUBSTANCE which should be handled by trained staff only.
Handling Advice:	Avoid repeated freeze-thaw cycles.
Storage:	-20 °C
Storage Comment:	For short term use, store at 2-8°C up to 1 week. For long term storage, store at -20°C in small

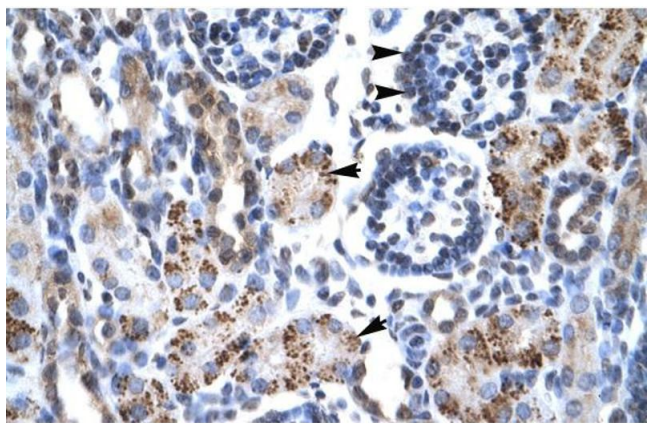
aliquots to prevent freeze-thaw cycles.

Images



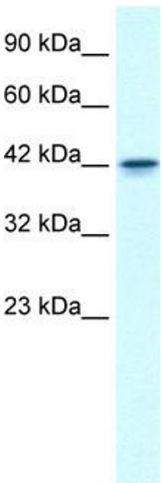
Immunohistochemistry

**Image 1.** Rabbit Anti-GFI1B Antibody Catalog Number: ARP30093 Paraffin Embedded Tissue: Human Heart Cellular Data: Myocardial cells Antibody Concentration: 4.0-8.0 ug/ml Magnification: 400X



Immunohistochemistry

**Image 2.** Rabbit Anti-GFI1B Antibody Catalog Number: ARP30093 Paraffin Embedded Tissue: Human Kidney Cellular Data: Epithelial cells of renal tubule and renal corpuscle Antibody Concentration: 4.0-8.0 ug/ml Magnification: 400X



Western Blotting

**Image 3.** WB Suggested Anti-GFI1B Antibody Titration: 0.2-1 ug/ml ELISA Titer: 1:312500 Positive Control: Jurkat cell lysate