

Datasheet for ABIN2779276
anti-RBM10 antibody (N-Term)[Go to Product page](#)

4 Images

Overview

Quantity:	100 µL
Target:	RBM10
Binding Specificity:	N-Term
Reactivity:	Human, Mouse, Rat, Cow, Dog, Guinea Pig, Horse, Rabbit
Host:	Rabbit
Clonality:	Polyclonal
Conjugate:	This RBM10 antibody is un-conjugated
Application:	Western Blotting (WB), Immunohistochemistry (IHC)

Product Details

Immunogen:	The immunogen is a synthetic peptide directed towards the N terminal region of human RBM10
Sequence:	QRRRRRRHRH SPTGPPGFPR DGDYRDQDYR TEQEEEEEEE EEEEEEEKAS
Predicted Reactivity:	Cow: 100%, Dog: 92%, Guinea Pig: 100%, Horse: 100%, Human: 100%, Mouse: 100%, Rabbit: 100%, Rat: 100%
Characteristics:	This is a rabbit polyclonal antibody against RBM10. It was validated on Western Blot and immunohistochemistry.
Purification:	Protein A purified

Target Details

Target:	RBM10
---------	-------

Target Details

Alternative Name:	RBM10 (RBM10 Products)
Background:	<p>RBM10 contains RNA recognition motif found in a variety of RNA binding proteins, including various hnRNP proteins, proteins implicated in regulation of alternative splicing, and protein components of snRNPs. In vitro studies showed that the rat homolog bound to RNA homopolymers, with a preference for G and U polyribonucleotides. This gene is part of a gene cluster on chromosome Xp11.23, and its 3' end lies within 20 kb upstream of UBE1.</p> <p>Alias Symbols: S1-1, TARPS, GPATC9, ZRANB5, GPATCH9, DXS8237E</p> <p>Protein Interaction Partner: TBC1D22B, AES, SUMO2, UBC, RPA3, RPA2, RPA1, ASB12, ZBTB1, FBXO6, PTBP2, LMNA, PAN2, SUGP1, CCAR1, PRPF19, GPKOW, U2SURP, U2AF2, SF3A1, SF3B4, DHX38, RBM10, SF1, WHSC1, U2AF1, SNRPC, SRSF6, RBM4, PTBP1, PRCC, IK, HNRNPK, HNRNPH2, DHX15, DDX5, CSNK2A1, SMU</p> <p>Protein Size: 930</p>
Molecular Weight:	104 kDa
Gene ID:	8241
NCBI Accession:	NM_005676 , NP_005667
UniProt:	P98175

Application Details

Application Notes:	Optimal working dilutions should be determined experimentally by the investigator.
Comment:	Antigen size: 930 AA
Restrictions:	For Research Use only

Handling

Format:	Liquid
Concentration:	Lot specific
Buffer:	Liquid. Purified antibody supplied in 1x PBS buffer with 0.09 % (w/v) sodium azide and 2 % sucrose.
Preservative:	Sodium azide
Precaution of Use:	This product contains Sodium azide: a POISONOUS AND HAZARDOUS SUBSTANCE which should be handled by trained staff only.
Handling Advice:	Avoid repeated freeze-thaw cycles.

Handling

Storage: -20 °C

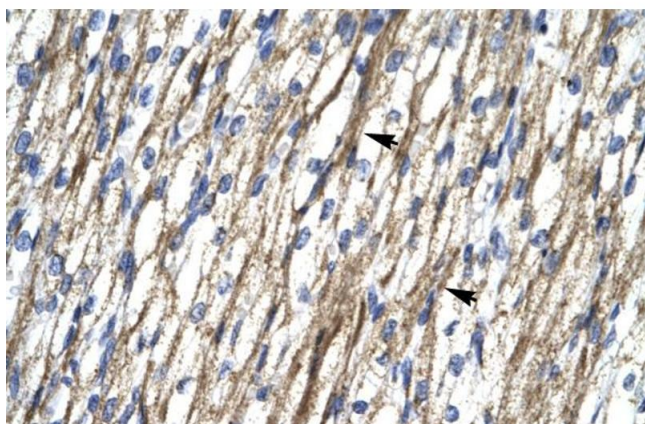
Storage Comment: For short term use, store at 2-8°C up to 1 week. For long term storage, store at -20°C in small aliquots to prevent freeze-thaw cycles.

Images



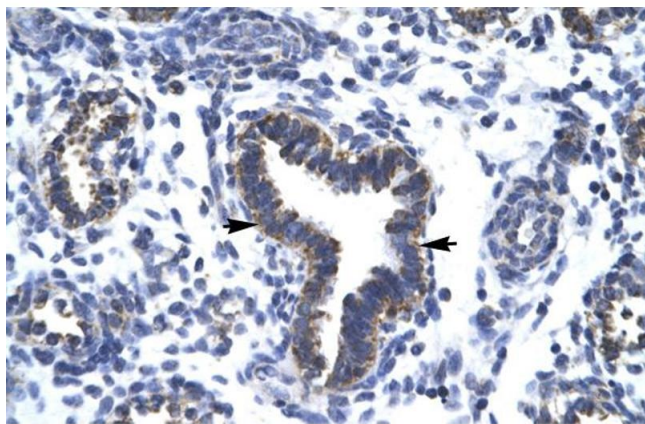
Immunohistochemistry

Image 1. Rabbit Anti-RBM10 Antibody Paraffin Embedded
Tissue: Human cardiac cell Cellular Data: Epithelial cells of renal tubule Antibody Concentration: 4.0-8.0 ug/ml Magnification: 400X



Immunohistochemistry

Image 2. Rabbit Anti-RBM10 Antibody Paraffin Embedded
Tissue: Human Heart Cellular Data: Myocardial cells Antibody Concentration: 4.0-8.0 ug/ml Magnification: 400X



Immunohistochemistry

Image 3. Rabbit Anti-RBM10 Antibody Paraffin Embedded
Tissue: Human Lung Cellular Data: Epithelial cells of bronchiole Antibody Concentration: 4.0-8.0 ug/ml Magnification: 400X

Please check the [product details page](#) for more images. Overall 4 images are available for ABIN2779276.