

Datasheet for ABIN2779277
anti-ELL antibody (C-Term)[Go to Product page](#)

2 Images

Overview

Quantity:	100 µL
Target:	ELL
Binding Specificity:	C-Term
Reactivity:	Human, Mouse, Dog, Rat, Cow, Horse, Guinea Pig, Zebrafish (Danio rerio)
Host:	Rabbit
Clonality:	Polyclonal
Conjugate:	This ELL antibody is un-conjugated
Application:	Western Blotting (WB), Immunohistochemistry (IHC)

Product Details

Immunogen:	The immunogen is a synthetic peptide directed towards the C terminal region of human ELL
Sequence:	TQLDAQLRQL SQGSEYETT RGQILQEYRK IKKTNTNYSQ EKHRCEYLHS
Predicted Reactivity:	Cow: 100%, Dog: 100%, Guinea Pig: 86%, Horse: 100%, Human: 100%, Mouse: 86%, Rat: 93%, Zebrafish: 86%
Characteristics:	This is a rabbit polyclonal antibody against ELL. It was validated on Western Blot and immunohistochemistry.
Purification:	Protein A purified

Target Details

Target:	ELL
---------	-----

Target Details

Alternative Name:	ELL (ELL Products)
Background:	<p>ELL was shown to encode a previously uncharacterized elongation factor that can increase the catalytic rate of RNA polymerase II transcription by suppressing transient pausing by polymerase at multiple sites along the DNA. Functionally, ELL resembles Elongin (SIII), a transcription elongation factor regulated by the product of the von Hippel-Lindau (VHL) tumor suppressor gene.</p> <p>Alias Symbols: MEN, ELL1, PPP1R68, C19orf17</p> <p>Protein Interaction Partner: UBC, LOC100363176, SNF8, MCM2, Polr2e, Polr2l, Polr2h, Polr2d, Polr2a, Polr2c, Polr2i, Polr2b, Polr2j, Polr2g, Polr2f, EAF1, ICE2, AFF4, PPP1CA, ICE1, MED26, MLLT3, CDK9, TFPT, KMT2A, MLLT1, USPL1, EAF2, HNRNPU, TP53, ZHX1, SIRT2,</p> <p>Protein Size: 621</p>
Molecular Weight:	68 kDa
Gene ID:	8178
NCBI Accession:	NM_006532 , NP_006523
UniProt:	P55199

Application Details

Application Notes:	Optimal working dilutions should be determined experimentally by the investigator.
Comment:	Antigen size: 621 AA
Restrictions:	For Research Use only

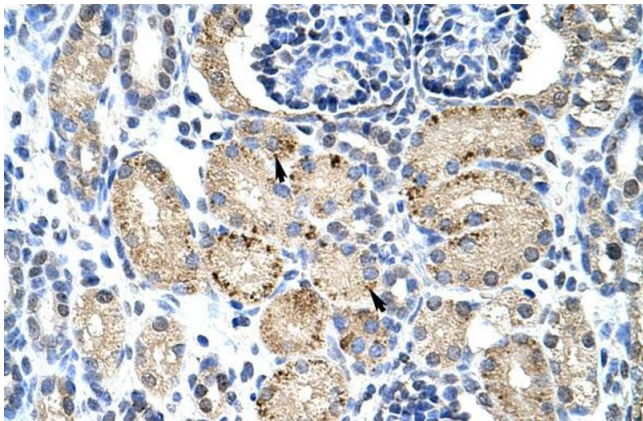
Handling

Format:	Liquid
Concentration:	Lot specific
Buffer:	Liquid. Purified antibody supplied in 1x PBS buffer with 0.09 % (w/v) sodium azide and 2 % sucrose.
Preservative:	Sodium azide
Precaution of Use:	This product contains Sodium azide: a POISONOUS AND HAZARDOUS SUBSTANCE which should be handled by trained staff only.
Handling Advice:	Avoid repeated freeze-thaw cycles.

Handling

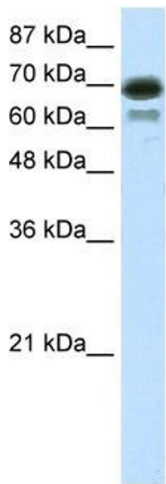
Storage:	-20 °C
Storage Comment:	For short term use, store at 2-8°C up to 1 week. For long term storage, store at -20°C in small aliquots to prevent freeze-thaw cycles.

Images



Immunohistochemistry

Image 1. Rabbit Anti-ELL Antibody Catalog Number: ARP30105 Paraffin Embedded Tissue: Human Kidney Cellular Data: Epithelial cells of renal tubule Antibody Concentration: 4.0-8.0 ug/ml Magnification: 400X



Western Blotting

Image 2. WB Suggested Anti-ELL Antibody Titration: 7.5ug/ml ELISA Titer: 1:312500 Positive Control: Transfected 293T