



[Go to Product page](#)

Datasheet for ABIN2779289
anti-Cyclin A antibody (C-Term)

4 Images

Overview

Quantity:	100 µL
Target:	Cyclin A (CCNA2)
Binding Specificity:	C-Term
Reactivity:	Human, Mouse, Rat, Cow, Rabbit, Zebrafish (Danio rerio), Dog, Horse, Guinea Pig, Saccharomyces cerevisiae, Sheep
Host:	Rabbit
Clonality:	Polyclonal
Conjugate:	This Cyclin A antibody is un-conjugated
Application:	Western Blotting (WB), Immunohistochemistry (IHC)

Product Details

Immunogen:	The immunogen is a synthetic peptide corresponding to a region of Rat
Sequence:	TGYTLESLKP CLMDLHQTYL KAPQHAQQSI REKYKHSKYH SVSLLNPPET
Predicted Reactivity:	Cow: 100%, Dog: 92%, Guinea Pig: 100%, Horse: 92%, Human: 100%, Mouse: 92%, Rabbit: 100%, Rat: 100%, Sheep: 100%, Yeast: 82%, Zebrafish: 77%
Characteristics:	This is a rabbit polyclonal antibody against Ccna2. It was validated on Western Blot.
Purification:	Affinity Purified

Target Details

Target:	Cyclin A (CCNA2)
---------	------------------

Target Details

Alternative Name:	Ccna2 (CCNA2 Products)
Background:	The function of Ccna2 remains unknown. Alias Symbols: MGC156527, Ccna2 Protein Size: 418
Molecular Weight:	47 kDa
Gene ID:	114494
NCBI Accession:	NM_053702 , NP_446154
Pathways:	PI3K-Akt Signaling , Cell Division Cycle , AMPK Signaling , Mitotic G1-G1/S Phases , DNA Replication , M Phase , Synthesis of DNA

Application Details

Application Notes:	Optimal working dilutions should be determined experimentally by the investigator.
Comment:	Antigen size: 418 AA
Restrictions:	For Research Use only

Handling

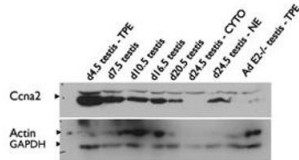
Format:	Liquid
Concentration:	Lot specific
Buffer:	Liquid. Purified antibody supplied in 1x PBS buffer with 0.09 % (w/v) sodium azide and 2 % sucrose.
Preservative:	Sodium azide
Precaution of Use:	This product contains Sodium azide: a POISONOUS AND HAZARDOUS SUBSTANCE which should be handled by trained staff only.
Handling Advice:	Avoid repeated freeze-thaw cycles.
Storage:	-20 °C
Storage Comment:	For short term use, store at 2-8°C up to 1 week. For long term storage, store at -20°C in small aliquots to prevent freeze-thaw cycles.



Western Blotting

Image 1. WB Suggested Anti-Ccna2 Antibody Titration: 0.2-1 ug/ml ELISA Titer: 1:312500 Positive Control: Rat Muscle

Immunoblot of testis extracts – TPE (total protein extract), NE (nuclear extract), CYTO (cytoplasmic fraction)



Ccna2 (ARP30159_P050)
Western Blot
Sample: Testis extracts

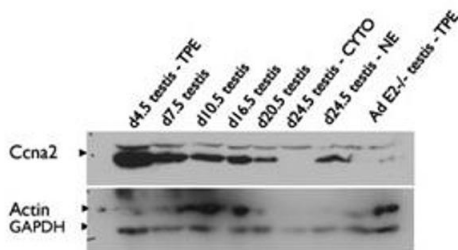
Submitted by:
Sunil Panigrahi
Columbia University Medical Center

Western Blotting

Image 2.

► Cyclin detected just below 50kDa marker with AVIVA's anti-Cyclin A2 #[ARP30159_P050](#)

Immunoblot of testis extracts – TPE (total protein extract), NE (nuclear extract), CYTO (cytoplasmic fraction)



Western Blotting

Image 3. Ccna2 antibody - C-terminal region validated by WB using testis

Please check the [product details page](#) for more images. Overall 4 images are available for ABIN2779289.