

Datasheet for ABIN2779323
anti-AKT2 antibody (Middle Region)



[Go to Product page](#)

4 Images

1 Publication

Overview

Quantity:	100 µL
Target:	AKT2
Binding Specificity:	Middle Region
Reactivity:	Human, Mouse, Rat, Dog, Cow, Pig, Horse, Zebrafish (Danio rerio)
Host:	Rabbit
Clonality:	Polyclonal
Conjugate:	This AKT2 antibody is un-conjugated
Application:	Western Blotting (WB), Immunohistochemistry (IHC)

Product Details

Immunogen:	The immunogen is a synthetic peptide directed towards the middle region of human AKT2
Sequence:	TSEVDTRYFD DEFTAQSITI TPPDRYDSLGLLELDQRTHF PQFSYSASIR
Predicted Reactivity:	Cow: 100%, Dog: 100%, Horse: 100%, Human: 100%, Mouse: 100%, Pig: 100%, Rat: 100%, Zebrafish: 100%
Characteristics:	This is a rabbit polyclonal antibody against AKT2. It was validated on Western Blot using a cell lysate as a positive control.
Purification:	Affinity Purified

Target Details

Target:	AKT2
---------	------

Target Details

Alternative Name: [AKT2 \(AKT2 Products\)](#)

Background: AKT2 belonging to a subfamily of serine/threonine kinases containing SH2-like (Src homology 2-like) domains. The gene encoding AKT2 was shown to be amplified and overexpressed in 2 of 8 ovarian carcinoma cell lines and 2 of 15 primary ovarian tumors. Overexpression contributes to the malignant phenotype of a subset of human ductal pancreatic cancers. AKT2 is a general protein kinase capable of phosphorylating several known proteins. This gene is a putative oncogene encoding a protein belonging to a subfamily of serine/threonine kinases containing SH2-like (Src homology 2-like) domains. The gene was shown to be amplified and overexpressed in 2 of 8 ovarian carcinoma cell lines and 2 of 15 primary ovarian tumors. Overexpression contributes to the malignant phenotype of a subset of human ductal pancreatic cancers. The encoded protein is a general protein kinase capable of phosphorylating several known proteins. Publication Note: This RefSeq record includes a subset of the publications that are available for this gene. Please see the Entrez Gene record to access additional publications. Alias Symbols: PKBBETA, PRKBB, RAC-BETA, PKBB, HIHGHH
Protein Interaction Partner: CLIP3, CHUK, PLEKHO1, PRKCZ, UBC, EGFR, POLR1B, SNX27, PNPLA3, STEAP4, ABCG8, POFUT1, TMED2, NAMPT, SORBS2, SPRR2A, CCL14, PRKDC, MAP3K5, HSP90AA1, APOB, APOA1, APPL1, APP, FSHR, VIM, SKI, GRK5, SH3RF1, ESR1, TTC3, SETDB1, XIAP, AKT1S1, TRIB3, PDPK1, GSK3
Protein Size: 481

Molecular Weight: 56 kDa

Gene ID: 208

NCBI Accession: [NM_001626, NP_001617](#)

UniProt: [P31751](#)

Pathways: [PI3K-Akt Signaling](#), [RTK Signaling](#), [AMPK Signaling](#), [TLR Signaling](#), [Cellular Glucan Metabolic Process](#), [Regulation of Carbohydrate Metabolic Process](#), [Hepatitis C](#), [VEGF Signaling](#)

Application Details

Application Notes: Optimal working dilutions should be determined experimentally by the investigator.

Comment: Antigen size: 481 AA

Restrictions: For Research Use only

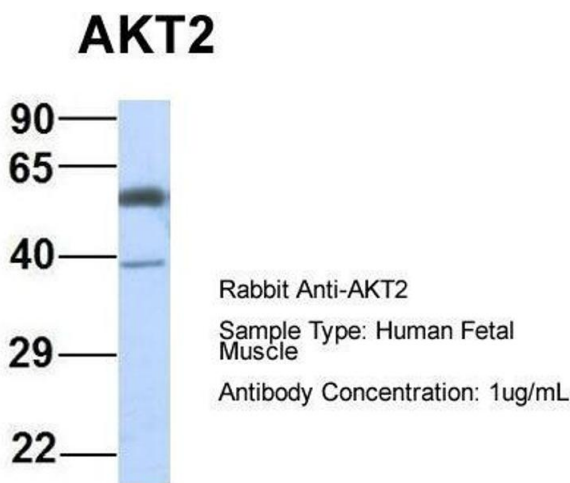
Handling

Format:	Liquid
Concentration:	Lot specific
Buffer:	Liquid. Purified antibody supplied in 1x PBS buffer with 0.09 % (w/v) sodium azide and 2 % sucrose.
Preservative:	Sodium azide
Precaution of Use:	This product contains Sodium azide: a POISONOUS AND HAZARDOUS SUBSTANCE which should be handled by trained staff only.
Handling Advice:	Avoid repeated freeze-thaw cycles.
Storage:	-20 °C
Storage Comment:	For short term use, store at 2-8°C up to 1 week. For long term storage, store at -20°C in small aliquots to prevent freeze-thaw cycles.

Publications

Product cited in:	Tan, Timakhov, Rao, Altomare, Xu, Liu, Gao, Jhanwar, Di Cristofano, Wiest, Knepper, Testa: "A novel recurrent chromosomal inversion implicates the homeobox gene Dlx5 in T-cell lymphomas from Lck-Akt2 transgenic mice." in: Cancer research , Vol. 68, Issue 5, pp. 1296-302, (2008) (PubMed).
-------------------	---

Images



Western Blotting

Image 1. Host: Rabbit

Target Name: AKT2

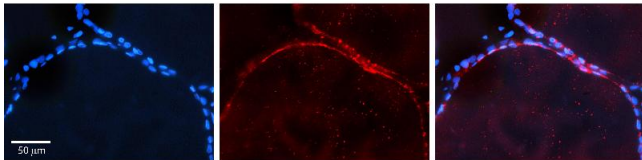
Sample Tissue: Human Fetal Muscle

Antibody Dilution: 1.0 µg/mL



Western Blotting

Image 2. WB Suggested Anti-AKT2 Antibody Titration: 0.2-1 ug/ml ELISA Titer: 1:62500 Positive Control: MCF7 cell lysate



Immunohistochemistry

Image 3. Rabbit Anti-AKT2 Antibody Formalin Fixed Paraffin Embedded Tissue: Human Thyroid Tissue Observed Staining: Plasma membrane in follicular cells Primary Antibody Concentration: 1:100 Other Working Concentrations: 1:600 Secondary Antibody: Donkey anti-Rabbit-Cy3 Secondary Antibody Concentration: 1:200 Magnification: 20X Exposure Time: 0.5 - 2.0 sec

Please check the [product details page](#) for more images. Overall 4 images are available for ABIN2779323.