

Datasheet for ABIN2779331
anti-NF-kB p65 antibody (Middle Region)



[Go to Product page](#)

6 Images

Overview

Quantity:	100 µL
Target:	NF-kB p65 (NFkBp65)
Binding Specificity:	Middle Region
Reactivity:	Human, Mouse, Rat, Cow, Pig, Dog
Host:	Rabbit
Clonality:	Polyclonal
Conjugate:	This NF-kB p65 antibody is un-conjugated
Application:	Western Blotting (WB), Immunohistochemistry (IHC)

Product Details

Immunogen:	The immunogen is a synthetic peptide directed towards the middle region of human RELA
Sequence:	LVTGAQRPPD PAPAPLGAPG LPNGLLSGDE DFSSIADMDF SALLSQISS
Predicted Reactivity:	Cow: 100%, Dog: 100%, Human: 100%, Mouse: 100%, Pig: 100%, Rat: 100%
Characteristics:	This is a rabbit polyclonal antibody against RELA. It was validated on Western Blot using a cell lysate as a positive control.
Purification:	Affinity Purified

Target Details

Target:	NF-kB p65 (NFkBp65)
Alternative Name:	RELA (NFkBp65 Products)

Target Details

Background:	<p>P65 is a subunit of the nuclear factor kappa-B, a second messenger, which activates the transcription of a number of genes in multiple tissues. The inhibitory effect of I-kappa-B upon NF-kappa-B in the cytoplasm is exerted primarily through the interaction with p65. p65 shows a weak DNA-binding site which could contribute directly to DNA binding in the NF-kappa-B complex. NFKB1 (MIM 164011) or NFKB2 (MIM 164012) is bound to REL (MIM 164910), RELA, or RELB (MIM 604758) to form the NFKB complex. The p50 (NFKB1)/p65 (RELA) heterodimer is the most abundant form of NFKB. The NFKB complex is inhibited by I-kappa-B proteins (NFKBIA, MIM 164008 or NFKBIB, MIM 604495), which inactivate NFKB by trapping it in the cytoplasm. Phosphorylation of serine residues on the I-kappa-B proteins by kinases (IKBKA, MIM 600664, or IKBKB, MIM 603258) marks them for destruction via the ubiquitination pathway, thereby allowing activation of the NFKB complex. Activated NFKB complex translocates into the nucleus and binds DNA at kappa-B-binding motifs such as 5-prime GGGRNNYYCC 3-prime or 5-prime HGGARNYYCC 3-prime (where H is A, C, or T, R is an A or G purine, and Y is a C or T pyrimidine).[supplied by OMIM]. Publication Note: This RefSeq record includes a subset of the publications that are available for this gene. Please see the Entrez Gene record to access additional publications. PRIMARYREFSEQ_SPAN PRIMARY_IDENTIFIER PRIMARY_SPAN COMP 1-1760 M62399.1 8-1767</p> <p>Alias Symbols: MGC131774, NFKB3, p65</p> <p>Protein Interaction Partner: GAN, CCND1, ABCA1, UBC, TCF4, SRSF7, RELA, REL, PRKDC, PLG, PEX1, NFKB2, NFKB1, MUC3A, KRT5, REV1, TXN2, FBXW11, IL1RN, IKBKB, HSPA5, HDAC1, EP300, CREBBP, MAP3K8, CHEK1, CDKN2A, CDK4, SPATA31A3, POTEJ, POTE, PIWIL4, DIS3L2, DCD, IKBKG, CHUK, PLA2G4A, ST</p> <p>Protein Size: 551</p>
Molecular Weight:	60 kDa
Gene ID:	5970
NCBI Accession:	NM_021975 , NP_068810
UniProt:	Q04206
Pathways:	NF-kappaB Signaling , RTK Signaling , TCR Signaling , TLR Signaling , Fc-epsilon Receptor Signaling Pathway , Neurotrophin Signaling Pathway , Activation of Innate immune Response , Cellular Response to Molecule of Bacterial Origin , Hepatitis C , Toll-Like Receptors Cascades , S100 Proteins

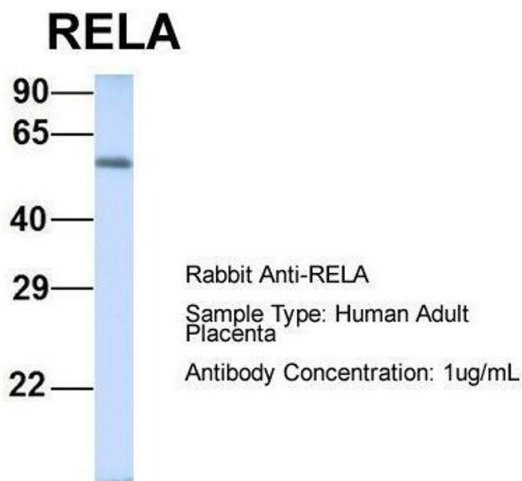
Application Details

Application Notes:	Optimal working dilutions should be determined experimentally by the investigator.
Comment:	Antigen size: 551 AA
Restrictions:	For Research Use only

Handling

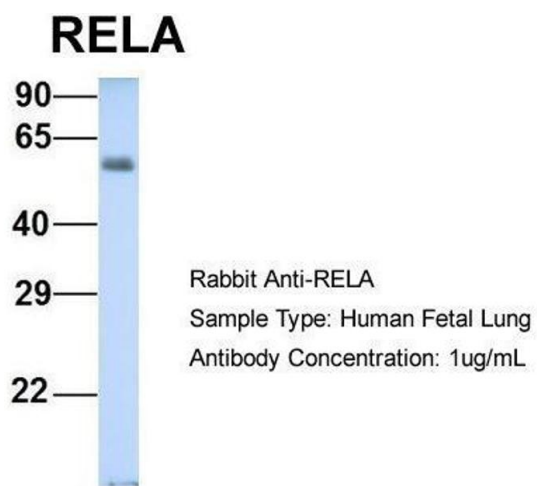
Format:	Liquid
Concentration:	Lot specific
Buffer:	Liquid. Purified antibody supplied in 1x PBS buffer with 0.09 % (w/v) sodium azide and 2 % sucrose.
Preservative:	Sodium azide
Precaution of Use:	This product contains Sodium azide: a POISONOUS AND HAZARDOUS SUBSTANCE which should be handled by trained staff only.
Handling Advice:	Avoid repeated freeze-thaw cycles.
Storage:	-20 °C
Storage Comment:	For short term use, store at 2-8°C up to 1 week. For long term storage, store at -20°C in small aliquots to prevent freeze-thaw cycles.

Images



Western Blotting

Image 1. Host: Rabbit
Target Name: RELA
Sample Tissue: Human Adult Placenta
Antibody Dilution: 1.0 µg/mL



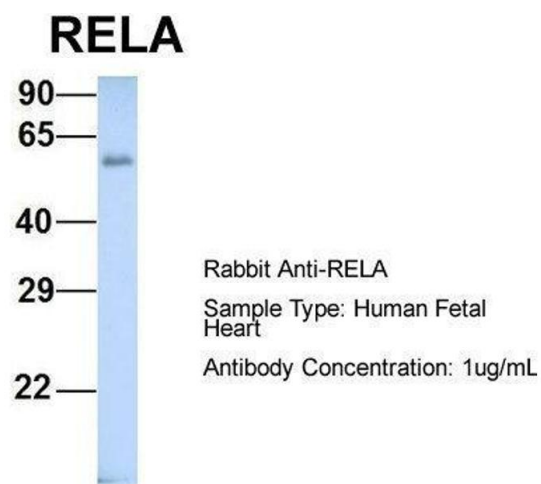
Western Blotting

Image 2. Host: Rabbit

Target Name: RELA

Sample Tissue: Human Fetal Lung

Antibody Dilution: 1.0 µg/mL



Western Blotting

Image 3. Host: Rabbit

Target Name: RELA

Sample Tissue: Human Fetal Heart

Antibody Dilution: 1.0 µg/mL

Please check the [product details page](#) for more images. Overall 6 images are available for ABIN2779331.