

Datasheet for ABIN2779377

**anti-Serotonin Receptor 2B antibody (N-Term)**

5 Images

[Go to Product page](#)

## Overview

Quantity:	100 µL
Target:	Serotonin Receptor 2B (HTR2B)
Binding Specificity:	N-Term
Reactivity:	Human, Cow, Dog, Guinea Pig, Pig, Horse
Host:	Rabbit
Clonality:	Polyclonal
Conjugate:	This Serotonin Receptor 2B antibody is un-conjugated
Application:	Western Blotting (WB), Immunofluorescence (IF)

## Product Details

Immunogen:	The immunogen is a synthetic peptide directed towards the N terminal region of human HTR2B
Sequence:	QTESIPEEMK QIVEEQGNKL HWAALLILMV IIPTIGGNTL VILAVSLEKK
Predicted Reactivity:	Cow: 100%, Dog: 80%, Guinea Pig: 85%, Horse: 93%, Human: 100%, Pig: 87%
Characteristics:	This is a rabbit polyclonal antibody against HTR2B. It was validated on Western Blot using a cell lysate as a positive control.
Purification:	Affinity Purified

## Target Details

Target:	Serotonin Receptor 2B (HTR2B)
Alternative Name:	HTR2B ( <a href="#">HTR2B Products</a> )

## Target Details

Background:	<p>Multiple receptor subtypes of serotonin neurotransmitters with multiple physiologic functions have been recognized. The 5-HT-2 receptors mediate many of the central and peripheral physiologic functions of serotonin. Cardiovascular effects include contraction of blood vessels and shape changes in platelets, central nervous system effects include neuronal sensitization to tactile stimuli and mediation of hallucinogenic effects of phenylisopropylamine hallucinogens.</p> <p>Alias Symbols: 5-HT(2B), 5-HT2B</p> <p>Protein Interaction Partner: AGTR1, SNTA1, LNX1, GNAQ, GNA11,</p> <p>Protein Size: 481</p>
Molecular Weight:	54 kDa
Gene ID:	3357
NCBI Accession:	<a href="#">NM_000867</a> , <a href="#">NP_000858</a>
UniProt:	<a href="#">P41595</a>
Pathways:	<a href="#">JAK-STAT Signaling</a> , <a href="#">Inositol Metabolic Process</a> , <a href="#">Regulation of G-Protein Coupled Receptor Protein Signaling</a> , <a href="#">Regulation of Carbohydrate Metabolic Process</a>

## Application Details

Application Notes:	Optimal working dilutions should be determined experimentally by the investigator.
Comment:	Antigen size: 481 AA
Restrictions:	For Research Use only

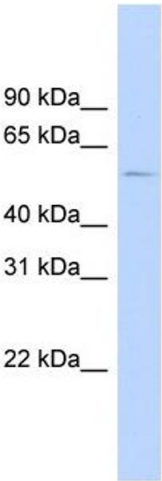
## Handling

Format:	Liquid
Concentration:	Lot specific
Buffer:	Liquid. Purified antibody supplied in 1x PBS buffer with 0.09 % (w/v) sodium azide and 2 % sucrose.
Preservative:	Sodium azide
Precaution of Use:	This product contains Sodium azide: a POISONOUS AND HAZARDOUS SUBSTANCE which should be handled by trained staff only.
Handling Advice:	Avoid repeated freeze-thaw cycles.

Handling

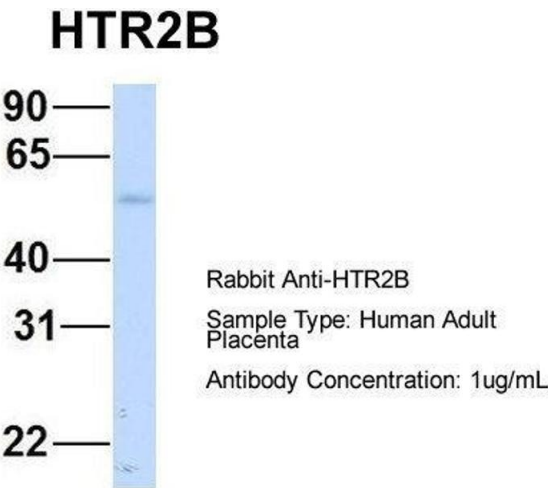
Storage:	-20 °C
Storage Comment:	For short term use, store at 2-8°C up to 1 week. For long term storage, store at -20°C in small aliquots to prevent freeze-thaw cycles.

Images



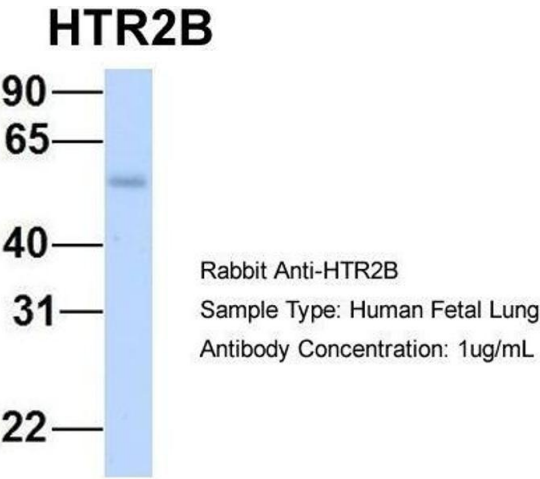
Western Blotting

**Image 1.** WB Suggested Anti-HTR2B Antibody Titration: 0.2-1 ug/ml ELISA Titer: 1:12500 Positive Control: 721\_B cell lysate HTR2B is supported by BioGPS gene expression data to be expressed in 721\_B



Western Blotting

**Image 2.** Host: Rabbit Target Name: HTR2B Sample Type: Human Adult Placenta Antibody Dilution: 1.0ug/ml



Western Blotting

**Image 3.** Host: Rabbit Target Name: HTR2B Sample Type: Human Fetal Lung Antibody Dilution: 1.0ug/ml

Please check the [product details page](#) for more images. Overall 5 images are available for ABIN2779377.