

Datasheet for ABIN2779379
anti-RAB10 antibody (C-Term)[Go to Product page](#)

2 Images

Overview

Quantity:	100 µL
Target:	RAB10
Binding Specificity:	C-Term
Reactivity:	Human, Mouse, Rat, Sheep, Cow, Dog, Guinea Pig, Horse, Rabbit, Zebrafish (Danio rerio)
Host:	Rabbit
Clonality:	Polyclonal
Conjugate:	This RAB10 antibody is un-conjugated
Application:	Western Blotting (WB)

Product Details

Immunogen:	The immunogen is a synthetic peptide corresponding to a region of Mouse
Sequence:	HGIRFFETSA KANINIEKAF LTLAEDILRK TPKKEPNSEN VDISSGGGV
Predicted Reactivity:	Cow: 100%, Dog: 100%, Guinea Pig: 100%, Horse: 100%, Human: 100%, Mouse: 100%, Rabbit: 100%, Rat: 100%, Sheep: 100%, Zebrafish: 100%
Characteristics:	This is a rabbit polyclonal antibody against Rab10. It was validated on Western Blot.
Purification:	Affinity Purified

Target Details

Target:	RAB10
Alternative Name:	Rab10 (RAB10 Products)

Target Details

Background: Rab10 may be involved in vesicular trafficking and neurotransmitter release.
Alias Symbols: AW107754
Protein Interaction Partner: CALM1, Lmna, Rims1,
Protein Size: 200

Molecular Weight: 22 kDa

Gene ID: 19325

NCBI Accession: [NM_016676](#), [NP_057885](#)

UniProt: [P61027](#)

Pathways: [Asymmetric Protein Localization](#), [SARS-CoV-2 Protein Interactome](#)

Application Details

Application Notes: Optimal working dilutions should be determined experimentally by the investigator.

Comment: Antigen size: 200 AA

Restrictions: For Research Use only

Handling

Format: Liquid

Concentration: Lot specific

Buffer: Liquid. Purified antibody supplied in 1x PBS buffer with 0.09 % (w/v) sodium azide and 2 % sucrose.

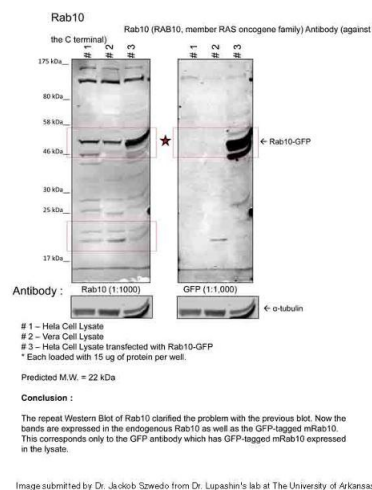
Preservative: Sodium azide

Precaution of Use: This product contains Sodium azide: a POISONOUS AND HAZARDOUS SUBSTANCE which should be handled by trained staff only.

Handling Advice: Avoid repeated freeze-thaw cycles.

Storage: -20 °C

Storage Comment: For short term use, store at 2-8°C up to 1 week. For long term storage, store at -20°C in small aliquots to prevent freeze-thaw cycles.



Western Blotting

Image 1. Sample Type: 1. Human Cervical Cancer Cell Lysate (15ug)
2. Monkey Fibroblast Cell Lysate (15ug)
3. Human Cervical Cancer Cell transfected with mouse Rab10-GFP (15ug)

Primary Dilution: 1:1000

Secondary Antibody: goat anti-Rabbit

Secondary Dilution: 1:40,000

Image Submitted by: Dr. Jakob Szwedo, Dr. Lupashin's Lab
University of Arkansas for Medical Sciences.

Western Blotting

Image 2. Rab10 antibody - C-terminal region validated by WB using Mouse Kidney lysate at 1ug/ml.

