

Datasheet for ABIN2779383
anti-CCBP2 antibody (N-Term)[Go to Product page](#)

2 Images

Overview

Quantity:	100 µL
Target:	CCBP2
Binding Specificity:	N-Term
Reactivity:	Human, Rabbit
Host:	Rabbit
Clonality:	Polyclonal
Conjugate:	This CCBP2 antibody is un-conjugated
Application:	Western Blotting (WB), Immunohistochemistry (IHC)

Product Details

Immunogen:	The immunogen is a synthetic peptide directed towards the N terminal region of human CCBP2
Sequence:	MAATASPQPL ATEDADSENS SFYYDYLDLDE VAFMLCRKDA VVSFGKVFLP
Predicted Reactivity:	Human: 100%, Rabbit: 86%
Characteristics:	This is a rabbit polyclonal antibody against CCBP2. It was validated on Western Blot and immunohistochemistry.
Purification:	Affinity Purified

Target Details

Target:	CCBP2
Alternative Name:	CCBP2 (CCBP2 Products)

Target Details

Background:	<p>CCBP2 is a beta chemokine receptor, which is predicted to be a seven transmembrane protein similar to G protein-coupled receptors. Chemokines and their receptor-mediated signal transduction are critical for the recruitment of effector immune cells to the inflammation site. The expression of this receptor in lymphatic endothelial cells and overexpression in vascular tumors suggested its function in chemokine-driven recirculation of leukocytes and possible chemokine effects on the development and growth of vascular tumors. This receptor appears to bind the majority of beta-chemokine family members, however, its specific function remains unknown. This gene encodes a beta chemokine receptor, which is predicted to be a seven transmembrane protein similar to G protein-coupled receptors. Chemokines and their receptor-mediated signal transduction are critical for the recruitment of effector immune cells to the inflammation site. This gene is expressed in a range of tissues and hemopoietic cells. The expression of this receptor in lymphatic endothelial cells and overexpression in vascular tumors suggested its function in chemokine-driven recirculation of leukocytes and possible chemokine effects on the development and growth of vascular tumors. This receptor appears to bind the majority of beta-chemokine family members, however, its specific function remains unknown. This gene is mapped to chromosome 3p21.3, a region that includes a cluster of chemokine receptor genes.</p> <p>Alias Symbols: CCR10, CCR9, CMKBR9, D6, MGC126678, MGC138250, hD6, CCBP2</p> <p>Protein Interaction Partner: APP, CCL3L3, CCL28, CCL27, CCL21, CCL25, CCL8, CCL19, CCL14, CCL13, CCL11, CCL5, CCL4, CCL3, CCL7, CCL2,</p> <p>Protein Size: 384</p>
-------------	---

Molecular Weight:	43 kDa
Gene ID:	1238
NCBI Accession:	NM_001296 , NP_001287
UniProt:	O00590

Application Details

Application Notes:	Optimal working dilutions should be determined experimentally by the investigator.
Comment:	Antigen size: 384 AA
Restrictions:	For Research Use only

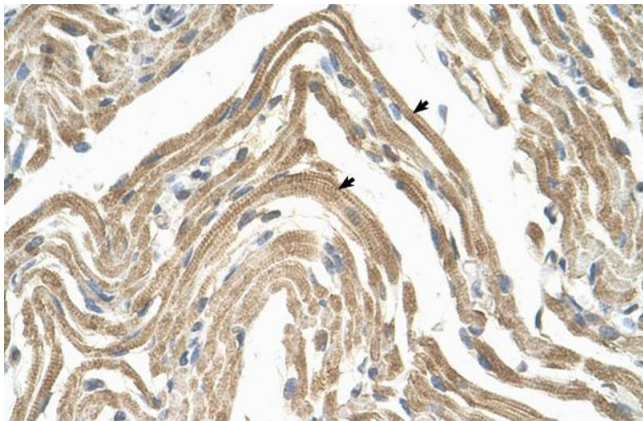
Handling

Format:	Liquid
---------	--------

Handling

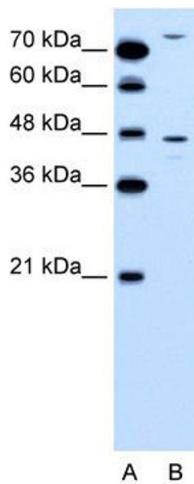
Concentration:	Lot specific
Buffer:	Liquid. Purified antibody supplied in 1x PBS buffer with 0.09 % (w/v) sodium azide and 2 % sucrose.
Preservative:	Sodium azide
Precaution of Use:	This product contains Sodium azide: a POISONOUS AND HAZARDOUS SUBSTANCE which should be handled by trained staff only.
Handling Advice:	Avoid repeated freeze-thaw cycles.
Storage:	-20 °C
Storage Comment:	For short term use, store at 2-8°C up to 1 week. For long term storage, store at -20°C in small aliquots to prevent freeze-thaw cycles.

Images



Immunohistochemistry

Image 1. Human Muscle



Western Blotting

Image 2. WB Suggested Anti-CCBP2 Antibody Titration: 0.2-1 ug/ml ELISA Titer: 1:62500 Positive Control: Jurkat cell lysate