



[Go to Product page](#)

Datasheet for ABIN2779391  
**anti-ZNF284 antibody (C-Term)**

1 Image

### Overview

Quantity:	100 µL
Target:	ZNF284
Binding Specificity:	C-Term
Reactivity:	Human
Host:	Rabbit
Clonality:	Polyclonal
Conjugate:	This ZNF284 antibody is un-conjugated
Application:	Western Blotting (WB)

### Product Details

Immunogen:	The immunogen is a synthetic peptide directed towards the C terminal region of human ZNF284
Sequence:	IHTGEKPYKY STAELNYSNV RIVGRAVSTV HAFKTNKATT VEKKHPNVRT
Characteristics:	This is a rabbit polyclonal antibody against ZNF284. It was validated on Western Blot using a cell lysate as a positive control.
Purification:	Affinity Purified

### Target Details

Target:	ZNF284
Alternative Name:	ZNF284 ( <a href="#">ZNF284 Products</a> )

## Target Details

---

Background:	ZNF284 belongs to the krueppel C2H2-type zinc-finger protein family. It contains 15 C2H2-type zinc fingers and 1 KRAB domain. ZNF284 may be involved in transcriptional regulation. Alias Symbols: DKFZp781F1775, ZNF284L Protein Interaction Partner: UBC, Protein Size: 512
Molecular Weight:	56 kDa
Gene ID:	342909
NCBI Accession:	<a href="#">XM_292766</a> , <a href="#">XP_292766</a>

## Application Details

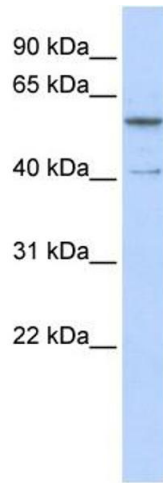
---

Application Notes:	Optimal working dilutions should be determined experimentally by the investigator.
Comment:	Antigen size: 512 AA
Restrictions:	For Research Use only

## Handling

---

Format:	Liquid
Concentration:	Lot specific
Buffer:	Liquid. Purified antibody supplied in 1x PBS buffer with 0.09 % (w/v) sodium azide and 2 % sucrose.
Preservative:	Sodium azide
Precaution of Use:	This product contains Sodium azide: a POISONOUS AND HAZARDOUS SUBSTANCE which should be handled by trained staff only.
Handling Advice:	Avoid repeated freeze-thaw cycles.
Storage:	-20 °C
Storage Comment:	For short term use, store at 2-8°C up to 1 week. For long term storage, store at -20°C in small aliquots to prevent freeze-thaw cycles.



### Western Blotting

**Image 1.** WB Suggested Anti-ZNF284 Antibody Titration:  
0.2-1 ug/ml ELISA Titer: 1:12500 Positive Control: Human  
brain