

Datasheet for ABIN2779395
anti-ZNF391 antibody (N-Term)[Go to Product page](#)

2 Images

Overview

Quantity:	100 µL
Target:	ZNF391
Binding Specificity:	N-Term
Reactivity:	Human, Horse, Cow, Dog, Pig
Host:	Rabbit
Clonality:	Polyclonal
Conjugate:	This ZNF391 antibody is un-conjugated
Application:	Western Blotting (WB), Immunohistochemistry (IHC)

Product Details

Immunogen:	The immunogen is a synthetic peptide directed towards the N terminal region of human LOC346157
Sequence:	SLSPNLDAQQ KIPKGHGSP I SRKNSKD NSD LIKHQRLFSQ RKPCKCNECE
Predicted Reactivity:	Cow: 100%, Dog: 85%, Horse: 85%, Human: 100%, Pig: 92%
Characteristics:	This is a rabbit polyclonal antibody against LOC346157. It was validated on Western Blot and immunohistochemistry.
Purification:	Affinity Purified

Target Details

Target:	ZNF391
---------	--------

Target Details

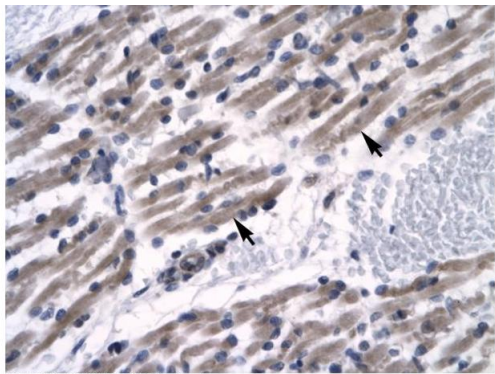
Alternative Name:	ZNF391 (ZNF391 Products)
Background:	LOC346157 is a new candidate transcription factor. Alias Symbols: dJ153G14.3 Protein Interaction Partner: CMTM5, TMEM159, AGTRAP, ARL6IP1, RTN3, Protein Size: 407
Molecular Weight:	46 kDa
Gene ID:	346157
NCBI Accession:	XM_294077 , XP_294077

Application Details

Application Notes:	Optimal working dilutions should be determined experimentally by the investigator.
Comment:	Antigen size: 407 AA
Restrictions:	For Research Use only

Handling

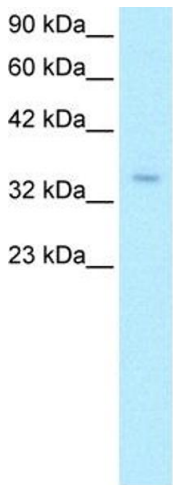
Format:	Liquid
Concentration:	Lot specific
Buffer:	Liquid. Purified antibody supplied in 1x PBS buffer with 0.09 % (w/v) sodium azide and 2 % sucrose.
Preservative:	Sodium azide
Precaution of Use:	This product contains Sodium azide: a POISONOUS AND HAZARDOUS SUBSTANCE which should be handled by trained staff only.
Handling Advice:	Avoid repeated freeze-thaw cycles.
Storage:	-20 °C
Storage Comment:	For short term use, store at 2-8°C up to 1 week. For long term storage, store at -20°C in small aliquots to prevent freeze-thaw cycles.



Rabbit Anti-LOC346157 Antibody
Catalog Number: ARP31983
Lot Number: QC1480
Paraffin Embedded Tissue: Human Muscle
Cells with Positive label: Skeletal muscle cells (Indicated with Arrows)
Antibody Concentration: 4.0-8.0 µg/ml
Magnification: 400X

Immunohistochemistry

Image 1. Human Muscle



Western Blotting

Image 2. WB Suggested Anti-ZNF391 Antibody Titration:
0.2-1 ug/ml Positive Control: HepG2 cell lysate