

Datasheet for ABIN2779402
anti-INSM1 antibody (Middle Region)[Go to Product page](#)

2 Images

Overview

Quantity:	100 µL
Target:	INSM1
Binding Specificity:	Middle Region
Reactivity:	Human, Mouse, Rat, Dog, Cow, Pig, Horse, Rabbit, Zebrafish (Danio rerio)
Host:	Rabbit
Clonality:	Polyclonal
Conjugate:	This INSM1 antibody is un-conjugated
Application:	Western Blotting (WB), Immunohistochemistry (IHC)

Product Details

Immunogen:	The immunogen is a synthetic peptide directed towards the middle region of human INSM1
Sequence:	PAAALRPPGK RPPPPTAAEP PAKAVKAPGA KKPKAIRKLH FEDEVTTSPV
Predicted Reactivity:	Cow: 100%, Dog: 100%, Horse: 79%, Human: 100%, Mouse: 100%, Pig: 100%, Rabbit: 79%, Rat: 79%, Zebrafish: 93%
Characteristics:	This is a rabbit polyclonal antibody against INSM1. It was validated on Western Blot and immunohistochemistry.
Purification:	Protein A purified

Target Details

Target:	INSM1
---------	-------

Target Details

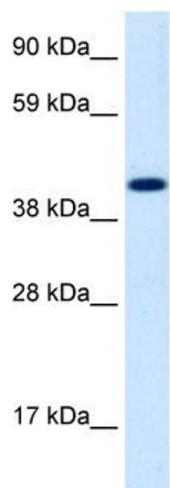
Alternative Name:	INSM1 (INSM1 Products)
Background:	<p>Insulinoma-associated 1 (INSM1) gene is intronless and encodes a protein containing both a zinc finger DNA-binding domain and a putative prohormone domain. This gene is a sensitive marker for neuroendocrine differentiation of human lung tumors.</p> <p>Alias Symbols: IA1, IA-1</p> <p>Protein Interaction Partner: HDAC3, HDAC1, CCND1, SORBS1, TUBB3, MPP3,</p> <p>Protein Size: 510</p>
Molecular Weight:	53 kDa
Gene ID:	3642
NCBI Accession:	NM_002196 , NP_002187
UniProt:	Q01101

Application Details

Application Notes:	Optimal working dilutions should be determined experimentally by the investigator.
Comment:	Antigen size: 510 AA
Restrictions:	For Research Use only

Handling

Format:	Liquid
Concentration:	Lot specific
Buffer:	Liquid. Purified antibody supplied in 1x PBS buffer with 0.09 % (w/v) sodium azide and 2 % sucrose.
Preservative:	Sodium azide
Precaution of Use:	This product contains Sodium azide: a POISONOUS AND HAZARDOUS SUBSTANCE which should be handled by trained staff only.
Handling Advice:	Avoid repeated freeze-thaw cycles.
Storage:	-20 °C
Storage Comment:	For short term use, store at 2-8°C up to 1 week. For long term storage, store at -20°C in small aliquots to prevent freeze-thaw cycles.



Western Blotting

Image 1. WB Suggested Anti-INSM1 Antibody Titration:
1.25ug/ml Positive Control: Human Cerebellum



Rabbit Anti-INSM1 Antibody
Catalog Number: ARP31990
Lot Number: QC1486
Paraffin Embedded Tissue: Human Heart
Cells with Positive label: Myocardial cells (Indicated with Arrows)
Antibody Concentration: 4.0-8.0 µg/ml
Magnification: 400X

Immunohistochemistry

Image 2. Human Heart