

Datasheet for ABIN2779408
anti-LMX1A antibody (Middle Region)

5 Images

[Go to Product page](#)

Overview

Quantity:	100 µL
Target:	LMX1A
Binding Specificity:	Middle Region
Reactivity:	Human, Mouse, Rat, Dog, Horse, Rabbit, Cow, Guinea Pig
Host:	Rabbit
Clonality:	Polyclonal
Conjugate:	This LMX1A antibody is un-conjugated
Application:	Western Blotting (WB), Immunohistochemistry (IHC)

Product Details

Immunogen:	The immunogen is a synthetic peptide directed towards the middle region of human LMX1A
Sequence:	QNQRAKMKKL ARRQQQQQD QQNTQRLSSA QTNGGGSAGM EGIMNPYTAL
Predicted Reactivity:	Cow: 100%, Dog: 100%, Guinea Pig: 100%, Horse: 86%, Human: 100%, Mouse: 93%, Rabbit: 100%, Rat: 100%
Characteristics:	This is a rabbit polyclonal antibody against LMX1A. It was validated on Western Blot.
Purification:	Affinity Purified

Target Details

Target:	LMX1A
Alternative Name:	LMX1A (LMX1A Products)

Target Details

Background:	<p>Insulin is produced exclusively by the beta cells in the islets of Langerhans in the pancreas. The level and beta-cell specificity of insulin gene expression are regulated by a set of nuclear genes that bind to specific sequences within the promoter of the insulin gene (INS, MIM 176730) and interact with RNA polymerase to activate or repress transcription. LMX1 is a homeodomain protein that binds an A/T-rich sequence in the insulin promoter and stimulates transcription of insulin. Insulin is produced exclusively by the beta cells in the islets of Langerhans in the pancreas. The level and beta-cell specificity of insulin gene expression are regulated by a set of nuclear genes that bind to specific sequences within the promoter of the insulin gene (INS, MIM 176730) and interact with RNA polymerase to activate or repress transcription. LMX1 is a homeodomain protein that binds an A/T-rich sequence in the insulin promoter and stimulates transcription of insulin (German et al., 1994 [PubMed 7698771]).[supplied by OMIM].</p> <p>PRIMARYREFSEQ_SPAN PRIMARY_IDENTIFIER PRIMARY_SPAN COMP 1-199 AL160058.8 14249-14447 c 200-2447 AK127724.1 362-2609 2448-3382 AL390730.12 9415-10349 c</p> <p>Alias Symbols: LMX-1, LMX1, LMX1.1, MGC87616</p> <p>Protein Interaction Partner: LDB1, BMPR2, ISL1, LHX3, LMX1A, TCF3,</p> <p>Protein Size: 382</p>
Molecular Weight:	43 kDa
Gene ID:	4009
NCBI Accession:	NM_177398 , NP_796372
UniProt:	Q8TE12
Pathways:	Dopaminergic Neurogenesis

Application Details

Application Notes:	Optimal working dilutions should be determined experimentally by the investigator.
Comment:	Antigen size: 382 AA
Restrictions:	For Research Use only

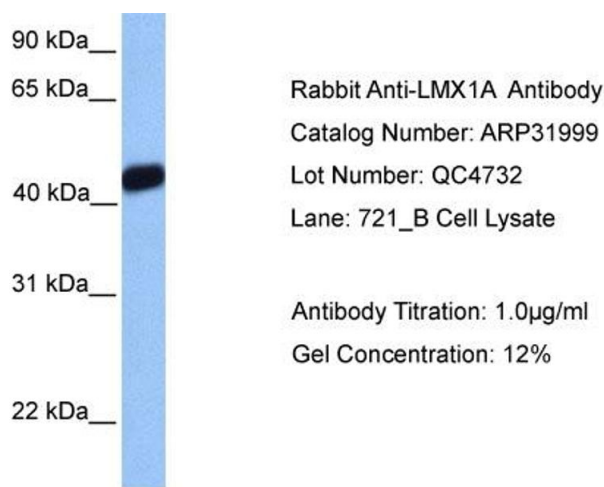
Handling

Format:	Liquid
Concentration:	Lot specific
Buffer:	Liquid. Purified antibody supplied in 1x PBS buffer with 0.09 % (w/v) sodium azide and 2 % sucrose.

Handling

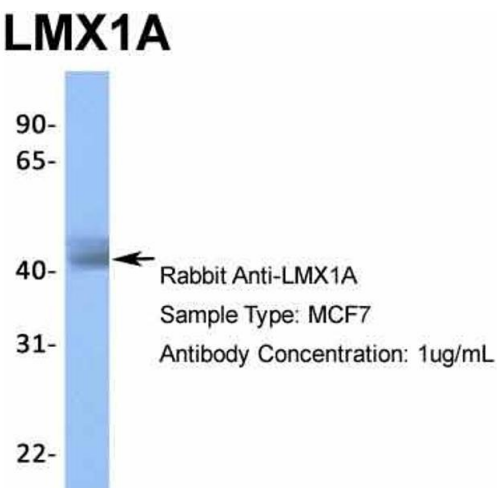
Preservative:	Sodium azide
Precaution of Use:	This product contains Sodium azide: a POISONOUS AND HAZARDOUS SUBSTANCE which should be handled by trained staff only.
Handling Advice:	Avoid repeated freeze-thaw cycles.
Storage:	-20 °C
Storage Comment:	For short term use, store at 2-8°C up to 1 week. For long term storage, store at -20°C in small aliquots to prevent freeze-thaw cycles.

Images



Western Blotting

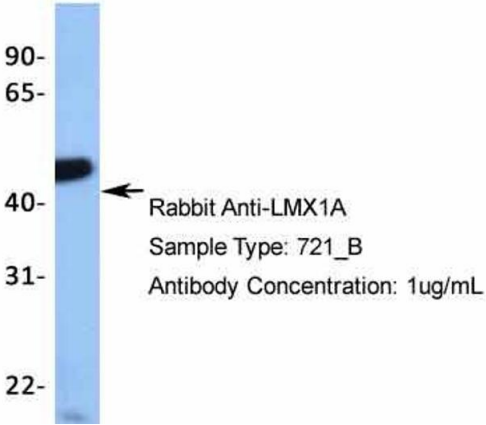
Image 1.



Western Blotting

Image 2. Host: Rabbit Target Name: LMX1A Sample Type: MCF7 Antibody Dilution: 1.0ug/ml

LMX1A



Western Blotting

Image 3. Host: Rabbit Target Name: TRIM10 Sample Type: 721_B Antibody Dilution: 1.0ug/ml

Please check the [product details page](#) for more images. Overall 5 images are available for ABIN2779408.