

Datasheet for ABIN2779414
anti-SMAD5 antibody (Middle Region)[Go to Product page](#)

3 Images

Overview

Quantity:	100 µL
Target:	SMAD5
Binding Specificity:	Middle Region
Reactivity:	Human, Mouse, Rat, Zebrafish (Danio rerio), Sheep, Cow, Dog, Guinea Pig, Horse, Rabbit
Host:	Rabbit
Clonality:	Polyclonal
Conjugate:	This SMAD5 antibody is un-conjugated
Application:	Western Blotting (WB)

Product Details

Immunogen:	The immunogen is a synthetic peptide directed towards the middle region of human SMAD5
Sequence:	YPPSPASSTY PNPASSGPG SPFQLPADTP PPAYMPPDDQ MGQDNSQPMQ
Predicted Reactivity:	Cow: 100%, Dog: 100%, Guinea Pig: 100%, Horse: 100%, Human: 100%, Mouse: 100%, Rabbit: 100%, Rat: 100%, Sheep: 93%, Zebrafish: 93%
Characteristics:	This is a rabbit polyclonal antibody against SMAD5. It was validated on Western Blot using a cell lysate as a positive control.
Purification:	Affinity Purified

Target Details

Target:	SMAD5
---------	-------

Target Details

Alternative Name:	SMAD5 (SMAD5 Products)
Background:	<p>SMAD5 undergoes copy number gain and increased expression, rather than loss of expression, and therefore does not act as a tumor-suppressor gene in hepatocellular carcinoma. Up-regulated Smad5 mediates apoptosis of gastric epithelial cells induced by Helicobacter pylori infection.</p> <p>Alias Symbols: DWFC, JV5-1, MADH5</p> <p>Protein Interaction Partner: UBC, SUMO1, HECW2, HBG2, BCAT1, SOX5, SNRPA, SNRNP70, SFPQ, RYR2, RBM4, PTPN12, PSMD11, NEDD4, SMAD4, SMAD1, ANKRD13A, PPIL4, SOX7, SMURF2, SMURF1, MTMR10, CHMP3, CXXC5, SF3B1, U2AF2, PNKP, WWP1, NAA20, EPN1, SMAD3, SMAD2, PAX6, COPS5, HGS, EP300, ELAVL1,</p> <p>Protein Size: 465</p>
Molecular Weight:	51 kDa
Gene ID:	4090
NCBI Accession:	NM_005903 , NP_005894
UniProt:	Q99717

Application Details

Application Notes:	Optimal working dilutions should be determined experimentally by the investigator.
Comment:	Antigen size: 465 AA
Restrictions:	For Research Use only

Handling

Format:	Liquid
Concentration:	Lot specific
Buffer:	Liquid. Purified antibody supplied in 1x PBS buffer with 0.09 % (w/v) sodium azide and 2 % sucrose.
Preservative:	Sodium azide
Precaution of Use:	This product contains Sodium azide: a POISONOUS AND HAZARDOUS SUBSTANCE which should be handled by trained staff only.
Handling Advice:	Avoid repeated freeze-thaw cycles.

Handling

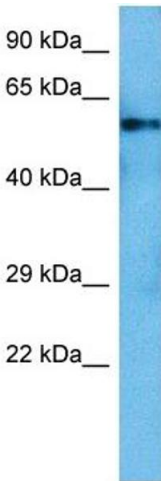
Storage:	-20 °C
Storage Comment:	For short term use, store at 2-8°C up to 1 week. For long term storage, store at -20°C in small aliquots to prevent freeze-thaw cycles.

Images



Western Blotting

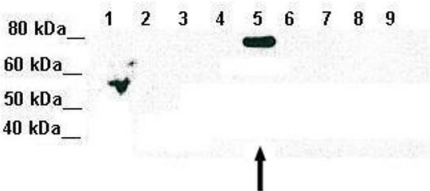
Image 1. WB Suggested Anti-SMAD5 Antibody Titration: 0.2-1 ug/ml ELISA Titer: 1:62500 Positive Control: HepG2 cell lysate



Western Blotting

Image 2. Host: Rat Target Name: SMAD5 Sample Tissue: Rat Liver Antibody Dilution: 1ug/ml

SMAD1



Western Blotting

Image 3. Lanes: Lane 1: 5ug of transfected 293T lysate (SMAD1) Lane 1: 5ug of transfected 293T lysate (SMAD2) Lane 1: 5ug of transfected 293T lysate (SMAD3) Lane 1: 5ug of transfected 293T lysate (SMAD4) Lane 1: 5ug of transfected 293T lysate (SMAD5) Lane 1: 5ug of transfected 293T lysate (SMAD6) Lane 1: 5ug of transfected 293T lysate (SMAD7) Lane 1: 5ug of transfected 293T lysate (SMAD8) Lane 1: 5ug of transfected 293T lysate (GFP) Primary Antibody Dilution: 1:1000 Secondary Antibody: Goat anti-

See Immunoblot 2 Data and Customer Feedback for more Information

Rabbit IgG HRP Conjugated Secondary Antibody Dilution:
1:10,000 Gene Name: SMAD5 Submitted by: Amanda Urick,
Medical College of Wisconsin