

Datasheet for ABIN2779425
anti-ASCL2 antibody (Middle Region)[Go to Product page](#)[1 Image](#)[1 Publication](#)

Overview

Quantity:	100 µL
Target:	ASCL2
Binding Specificity:	Middle Region
Reactivity:	Human, Mouse, Rat, Cow, Dog, Guinea Pig, Rabbit, Zebrafish (Danio rerio)
Host:	Rabbit
Clonality:	Polyclonal
Conjugate:	This ASCL2 antibody is un-conjugated
Application:	Western Blotting (WB)

Product Details

Immunogen:	The immunogen is a synthetic peptide directed towards the middle region of human ASCL2
Sequence:	QALRQHVPHG GASKKLSKVE TLRSAYEYIR ALQRLLAEHD AVRNALAGGL
Predicted Reactivity:	Cow: 100%, Dog: 100%, Guinea Pig: 100%, Human: 100%, Mouse: 92%, Rabbit: 77%, Rat: 100%, Zebrafish: 77%
Characteristics:	This is a rabbit polyclonal antibody against ASCL2. It was validated on Western Blot using a cell lysate as a positive control.
Purification:	Affinity Purified

Target Details

Target:	ASCL2
---------	-------

Target Details

Alternative Name:	ASCL2 (ASCL2 Products)
Background:	<p>AS-C proteins are involved in the determination of the neuronal precursors in the peripheral nervous system and the central nervous system. This gene is a member of the basic helix-loop-helix (BHLH) family of transcription factors. It activates transcription by binding to the E box (5'-CANNTG-3'). Dimerization with other BHLH proteins is required for efficient DNA binding.</p> <p>Involved in the determination of the neuronal precursors in the peripheral nervous system and the central nervous system. PRIMARYREFSEQ_SPAN PRIMARY_IDENTIFIER PRIMARY_SPAN COMP 1-1649 BC028140.1 1-1649 1650-1864 BC057801.1 1286-1500</p> <p>Alias Symbols: ASH2, HASH2, MASH2, bHLHa45</p> <p>Protein Interaction Partner: EP300, APEX1, CALM3, CALM1, HCFC1, TUBB, KMT2C, NCOA6, TUBA4A, RBBP5,</p> <p>Protein Size: 193</p>
Molecular Weight:	20 kDa
Gene ID:	430
NCBI Accession:	NM_005170 , NP_005161
UniProt:	Q99929
Pathways:	Stem Cell Maintenance

Application Details

Application Notes:	Optimal working dilutions should be determined experimentally by the investigator.
Comment:	Antigen size: 193 AA
Restrictions:	For Research Use only

Handling

Format:	Liquid
Concentration:	Lot specific
Buffer:	Liquid. Purified antibody supplied in 1x PBS buffer with 0.09 % (w/v) sodium azide and 2 % sucrose.
Preservative:	Sodium azide
Precaution of Use:	This product contains Sodium azide: a POISONOUS AND HAZARDOUS SUBSTANCE which should be handled by trained staff only.

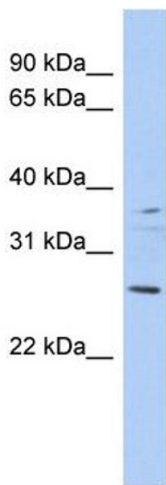
Handling

Handling Advice:	Avoid repeated freeze-thaw cycles.
Storage:	-20 °C
Storage Comment:	For short term use, store at 2-8°C up to 1 week. For long term storage, store at -20°C in small aliquots to prevent freeze-thaw cycles.

Publications

Product cited in:	Nishimura, Mitne-Neto, Silva, Oliveira, Vainzof, Zatz: "A novel locus for late onset amyotrophic lateral sclerosis/motor neurone disease variant at 20q13." in: Journal of medical genetics , Vol. 41, Issue 4, pp. 315-20, (2004) (PubMed).
-------------------	---

Images



Western Blotting

Image 1. WB Suggested Anti-ASCL2 Antibody Titration: 0.2-1 ug/ml ELISA Titer: 1:312500 Positive Control: DU145 cell lysate