

Datasheet for ABIN2779426
anti-MTF1 antibody (C-Term)



[Go to Product page](#)

1 Image

Overview

Quantity:	100 µL
Target:	MTF1
Binding Specificity:	C-Term
Reactivity:	Human, Mouse, Rat, Dog, Cow, Horse, Rabbit, Guinea Pig
Host:	Rabbit
Clonality:	Polyclonal
Conjugate:	This MTF1 antibody is un-conjugated
Application:	Western Blotting (WB)

Product Details

Immunogen:	The immunogen is a synthetic peptide directed towards the C terminal region of human MTF1
Sequence:	QSSLVMGEQN LQWILNGATS SPQNQEIQQ ASKVEKVFFT TAVPVASSPG
Predicted Reactivity:	Cow: 100%, Dog: 100%, Guinea Pig: 93%, Horse: 100%, Human: 100%, Mouse: 100%, Rabbit: 93%, Rat: 100%
Characteristics:	This is a rabbit polyclonal antibody against MTF1. It was validated on Western Blot using a cell lysate as a positive control.
Purification:	Protein A purified

Target Details

Target:	MTF1
---------	------

Target Details

Alternative Name:	MTF1 (MTF1 Products)
Background:	<p>The zinc finger transcription factor MTF-1 (metal-responsive transcription factor-1) is conserved from insects to vertebrates. The major role of MTF-1 in both organisms is to control the transcription of genes involved in the homeostasis and detoxification of heavy metal ions such as Cu²⁺, Zn²⁺ and Cd²⁺. In mammals, MTF-1 serves at least two additional roles. First, targeted disruption of the MTF-1 gene results in death at embryonic day 14 due to liver degeneration, revealing a stage-specific developmental role. Second, under hypoxic-anoxic stress, MTF-1 helps to activate the transcription of the gene placental growth factor (PIGF), an angiogenic protein.</p> <p>Alias Symbols: ZRF, MTF-1</p> <p>Protein Interaction Partner: AP1M1, EP300, CREBBP, MT1G,</p> <p>Protein Size: 753</p>
Molecular Weight:	81 kDa
Gene ID:	4520
NCBI Accession:	NM_005955 , NP_005946
UniProt:	Q14872

Application Details

Application Notes:	Optimal working dilutions should be determined experimentally by the investigator.
Comment:	Antigen size: 753 AA
Restrictions:	For Research Use only

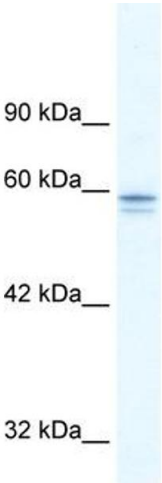
Handling

Format:	Liquid
Concentration:	Lot specific
Buffer:	Liquid. Purified antibody supplied in 1x PBS buffer with 0.09 % (w/v) sodium azide and 2 % sucrose.
Preservative:	Sodium azide
Precaution of Use:	This product contains Sodium azide: a POISONOUS AND HAZARDOUS SUBSTANCE which should be handled by trained staff only.
Handling Advice:	Avoid repeated freeze-thaw cycles.

Handling

Storage:	-20 °C
Storage Comment:	For short term use, store at 2-8°C up to 1 week. For long term storage, store at -20°C in small aliquots to prevent freeze-thaw cycles.

Images



Western Blotting

Image 1. WB Suggested Anti-MTF1 Antibody Titration: 5.0ug/ml ELISA Titer: 1:2500 Positive Control: HepG2 cell lysate MTF1 is supported by BioGPS gene expression data to be expressed in HepG2