



[Go to Product page](#)

Datasheet for ABIN2779449
anti-PBX3 antibody (N-Term)

2 Images

Overview

Quantity:	100 µL
Target:	PBX3
Binding Specificity:	N-Term
Reactivity:	Human, Mouse, Rat, Zebrafish (Danio rerio), Cow, Guinea Pig
Host:	Rabbit
Clonality:	Polyclonal
Conjugate:	This PBX3 antibody is un-conjugated
Application:	Western Blotting (WB), Immunohistochemistry (IHC)

Product Details

Immunogen:	The immunogen is a synthetic peptide directed towards the N terminal region of human PBX3
Sequence:	SRMLQTLAGV NLAGHSVQGG MALPPPPHGH EGADGDGRKQ DIGDILHQIM
Predicted Reactivity:	Cow: 100%, Guinea Pig: 100%, Human: 100%, Mouse: 100%, Rat: 100%, Zebrafish: 85%
Characteristics:	This is a rabbit polyclonal antibody against PBX3. It was validated on Western Blot and immunohistochemistry.
Purification:	Protein A purified

Target Details

Target:	PBX3
Alternative Name:	PBX3 (PBX3 Products)

Target Details

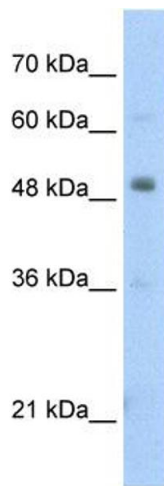
Background:	PBX3 is a transcriptional activator that binds the sequence 5'-ATCAATCAA-3'. Alias Symbols: RP11-336P12.1 Protein Interaction Partner: FSD2, MAL2, AGTRAP, TRIM44, MAGEC2, ARL6IP1, TRAF1, TPM3, MAGEA1, RABAC1, ZNHIT3, MEIS1, HOXB8, HOXA9, Protein Size: 434
Molecular Weight:	47 kDa
Gene ID:	5090
NCBI Accession:	NM_006195 , NP_006186
UniProt:	P40426

Application Details

Application Notes:	Optimal working dilutions should be determined experimentally by the investigator.
Comment:	Antigen size: 434 AA
Restrictions:	For Research Use only

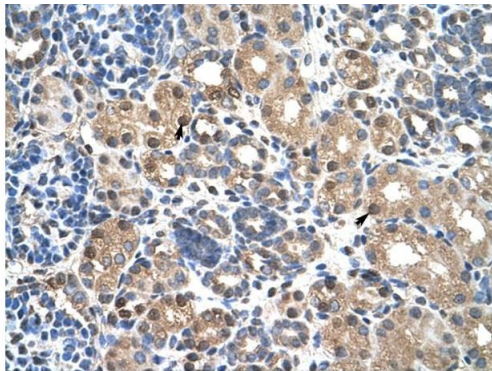
Handling

Format:	Liquid
Concentration:	Lot specific
Buffer:	Liquid. Purified antibody supplied in 1x PBS buffer with 0.09 % (w/v) sodium azide and 2 % sucrose.
Preservative:	Sodium azide
Precaution of Use:	This product contains Sodium azide: a POISONOUS AND HAZARDOUS SUBSTANCE which should be handled by trained staff only.
Handling Advice:	Avoid repeated freeze-thaw cycles.
Storage:	-20 °C
Storage Comment:	For short term use, store at 2-8°C up to 1 week. For long term storage, store at -20°C in small aliquots to prevent freeze-thaw cycles.



Western Blotting

Image 1. WB Suggested Anti-PBX3 Antibody Titration:
2.5ug/ml Positive Control: HepG2 cell lysate



Immunohistochemistry

Image 2. Human kidney

Rabbit Anti-PBX3 Antibody
Catalog Number: ARP32070
Lot Number: QC11914
Paraffin Embedded Tissue: Human Kidney
Cells with Positive label: Epithelial cells of renal tubule (Indicated with Arrows)
Antibody Concentration: 4.0-8.0 µg/ml
Magnification: 400X