

Datasheet for ABIN2779450
anti-BOLA1 antibody (N-Term)[Go to Product page](#)

2 Images

Overview

Quantity:	100 µL
Target:	BOLA1
Binding Specificity:	N-Term
Reactivity:	Human, Mouse, Rat, Rabbit, Cow, Zebrafish (Danio rerio), Pig, Dog, Guinea Pig
Host:	Rabbit
Clonality:	Polyclonal
Conjugate:	This BOLA1 antibody is un-conjugated
Application:	Western Blotting (WB), Immunohistochemistry (IHC)

Product Details

Immunogen:	The immunogen is a synthetic peptide directed towards the N terminal region of human CGI-143
Sequence:	AGSGAIGPVE AAIRTKLEEA LSPEVLELRN ESGGHAVPPG SETHFRVAVV
Predicted Reactivity:	Cow: 100%, Dog: 86%, Guinea Pig: 93%, Human: 100%, Mouse: 93%, Pig: 100%, Rabbit: 93%, Rat: 100%, Zebrafish: 91%
Characteristics:	This is a rabbit polyclonal antibody against CGI-143. It was validated on Western Blot and immunohistochemistry.
Purification:	Affinity Purified

Target Details

Target:	BOLA1
---------	-------

Target Details

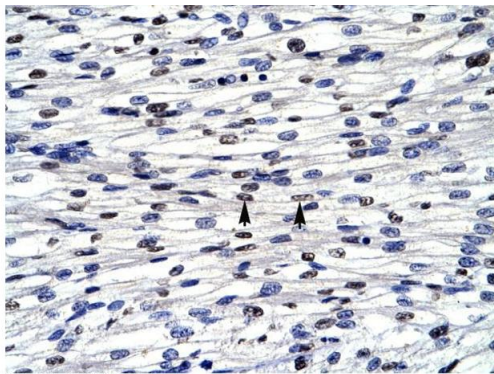
Alternative Name:	CGI-143 (BOLA1 Products)
Background:	<p>CGI-143 encodes proteins that seem to be involved in cell proliferation or cell-cycle regulation, but the molecular function is still unknown.</p> <p>Alias Symbols: hBoIA, CGI-143, RP11-196G18.18</p> <p>Protein Interaction Partner: C1orf94, GLRX3, BIRC2, APP, RGS20,</p> <p>Protein Size: 137</p>
Molecular Weight:	14 kDa
Gene ID:	51027
NCBI Accession:	NM_016074 , NP_057158
UniProt:	Q9Y3E2

Application Details

Application Notes:	Optimal working dilutions should be determined experimentally by the investigator.
Comment:	Antigen size: 137 AA
Restrictions:	For Research Use only

Handling

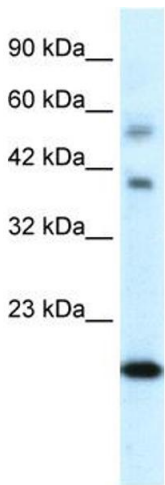
Format:	Liquid
Concentration:	Lot specific
Buffer:	Liquid. Purified antibody supplied in 1x PBS buffer with 0.09 % (w/v) sodium azide and 2 % sucrose.
Preservative:	Sodium azide
Precaution of Use:	This product contains Sodium azide: a POISONOUS AND HAZARDOUS SUBSTANCE which should be handled by trained staff only.
Handling Advice:	Avoid repeated freeze-thaw cycles.
Storage:	-20 °C
Storage Comment:	For short term use, store at 2-8°C up to 1 week. For long term storage, store at -20°C in small aliquots to prevent freeze-thaw cycles.



Rabbit Anti-CGI-143 Antibody
Catalog Number: ARP32073
Lot Number: QC1892
Paraffin Embedded Tissue: Human Heart
Cells with Positive label: Myocardial cells (Indicated with Arrows)
Antibody Concentration: 4.0-8.0 µg/ml
Magnification: 400X

Immunohistochemistry

Image 1. Human Heart



Western Blotting

Image 2. WB Suggested Anti-CGI-143 Antibody Titration:
0.2-1 ug/ml Positive Control: Human heart