

Datasheet for ABIN2779451
anti-ZNF691 antibody (N-Term)[Go to Product page](#)

1 Image

Overview

Quantity:	100 µL
Target:	ZNF691
Binding Specificity:	N-Term
Reactivity:	Human, Dog, Rat, Cow, Horse, Mouse, Rabbit, Pig
Host:	Rabbit
Clonality:	Polyclonal
Conjugate:	This ZNF691 antibody is un-conjugated
Application:	Western Blotting (WB)

Product Details

Immunogen:	The immunogen is a synthetic peptide directed towards the N terminal region of human ZNF691
Sequence:	GSEKEQSPEP HLPEEGEGGK PWRVDDSEGS WIPPGEKEHG QESLSDELQE
Predicted Reactivity:	Cow: 92%, Dog: 83%, Horse: 83%, Human: 100%, Mouse: 83%, Pig: 92%, Rabbit: 83%, Rat: 92%
Characteristics:	This is a rabbit polyclonal antibody against ZNF691. It was validated on Western Blot using a cell lysate as a positive control.
Purification:	Protein A purified

Target Details

Target:	ZNF691
---------	--------

Target Details

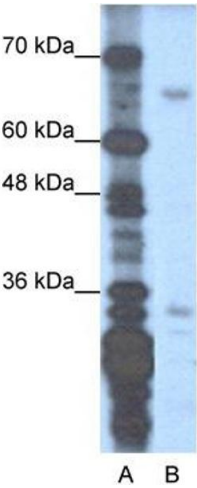
Alternative Name:	ZNF691 (ZNF691 Products)
Background:	ZNF691 may be involved in transcriptional regulation Alias Symbols: Zfp691, RP11-342M1.5 Protein Interaction Partner: UBC, HAP1, Protein Size: 284
Molecular Weight:	33 kDa
Gene ID:	51058
NCBI Accession:	NM_015911 , NP_056995

Application Details

Application Notes:	Optimal working dilutions should be determined experimentally by the investigator.
Comment:	Antigen size: 284 AA
Restrictions:	For Research Use only

Handling

Format:	Liquid
Concentration:	Lot specific
Buffer:	Liquid. Purified antibody supplied in 1x PBS buffer with 0.09 % (w/v) sodium azide and 2 % sucrose.
Preservative:	Sodium azide
Precaution of Use:	This product contains Sodium azide: a POISONOUS AND HAZARDOUS SUBSTANCE which should be handled by trained staff only.
Handling Advice:	Avoid repeated freeze-thaw cycles.
Storage:	-20 °C
Storage Comment:	For short term use, store at 2-8°C up to 1 week. For long term storage, store at -20°C in small aliquots to prevent freeze-thaw cycles.



Western Blotting

Image 1. WB Suggested Anti-ZNF691 Antibody Titration:
1.25ug/ml Positive Control: Transfected 293T