

Datasheet for ABIN2779454
anti-NR2E1 antibody (N-Term)[Go to Product page](#)

7 Images

Overview

Quantity:	100 µL
Target:	NR2E1
Binding Specificity:	N-Term
Reactivity:	Human, Mouse, Rat, Rabbit, Cow, Dog, Horse, Guinea Pig, Zebrafish (Danio rerio)
Host:	Rabbit
Clonality:	Polyclonal
Conjugate:	This NR2E1 antibody is un-conjugated
Application:	Western Blotting (WB), Immunohistochemistry (IHC)

Product Details

Immunogen:	The immunogen is a synthetic peptide directed towards the N terminal region of human NR2E1
Sequence:	MSKPAGSTSR ILDIPCKVCG DRSSGKHYGV YACDGC SGFF KRSIRRNRTY
Predicted Reactivity:	Cow: 100%, Dog: 100%, Guinea Pig: 100%, Horse: 100%, Human: 100%, Mouse: 100%, Rabbit: 100%, Rat: 100%, Zebrafish: 100%
Characteristics:	This is a rabbit polyclonal antibody against NR2E1. It was validated on Western Blot using a cell lysate as a positive control.
Purification:	Affinity Purified

Target Details

Target:	NR2E1
---------	-------

Target Details

Alternative Name:	NR2E1 (NR2E1 Products)
Background:	<p>The NR2E1 gene is a member of the steroid nuclear receptor superfamily and is predominately expressed in the brain. The contributions of this gene to human B-cell leukemia and to brain development are unknown at present.</p> <p>Alias Symbols: TLL, TLX, XTLL</p> <p>Protein Interaction Partner: NSD1, BCL11A, UBC, ERBB2IP, SP1, HDAC7, HDAC5, HDAC3, GSE1, RCOR1, KDM1A, ZMYM2, HDAC2, HDAC1, Gg, ATN1, RERE,</p> <p>Protein Size: 385</p>
Molecular Weight:	42 kDa
Gene ID:	7101
NCBI Accession:	NM_003269 , NP_003260
UniProt:	Q9Y466
Pathways:	Nuclear Receptor Transcription Pathway , Steroid Hormone Mediated Signaling Pathway , Stem Cell Maintenance

Application Details

Application Notes:	Optimal working dilutions should be determined experimentally by the investigator.
Comment:	Antigen size: 385 AA
Restrictions:	For Research Use only

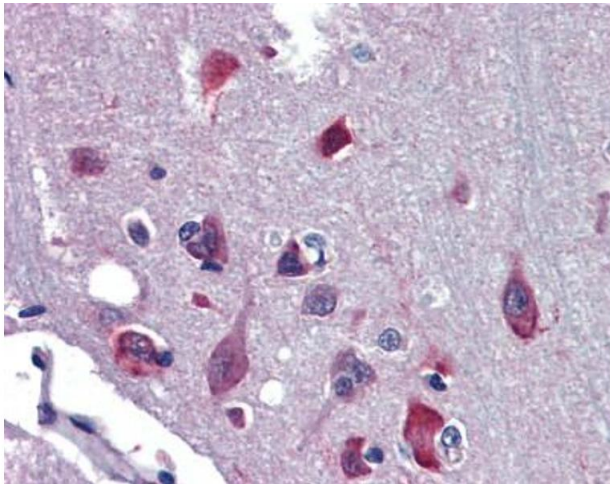
Handling

Format:	Liquid
Concentration:	Lot specific
Buffer:	Liquid. Purified antibody supplied in 1x PBS buffer with 0.09 % (w/v) sodium azide and 2 % sucrose.
Preservative:	Sodium azide
Precaution of Use:	This product contains Sodium azide: a POISONOUS AND HAZARDOUS SUBSTANCE which should be handled by trained staff only.
Handling Advice:	Avoid repeated freeze-thaw cycles.
Storage:	-20 °C

Handling

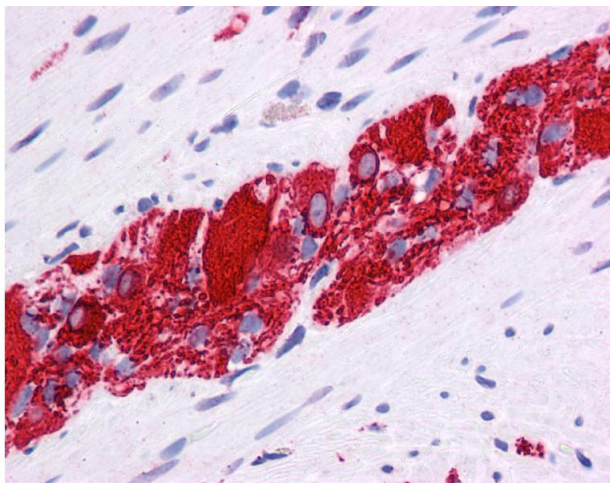
Storage Comment: For short term use, store at 2-8°C up to 1 week. For long term storage, store at -20°C in small aliquots to prevent freeze-thaw cycles.

Images



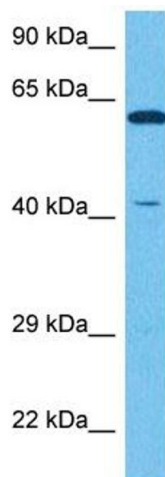
Immunohistochemistry

Image 1.



Immunohistochemistry

Image 2.



Western Blotting

Image 3. Host: Rabbit Target Name: NR2E1 Sample Tissue: Human NCI-H226 Whole Cell Antibody Dilution: 1 ug/ml

Please check the [product details page](#) for more images. Overall 7 images are available for ABIN2779454.