



[Go to Product page](#)

Datasheet for ABIN2779461

anti-Foxo6 antibody (Middle Region)

1 Image

Overview

Quantity:	100 µL
Target:	Foxo6
Binding Specificity:	Middle Region
Reactivity:	Human, Mouse, Rat, Guinea Pig, Dog, Cow, Horse, Rabbit, Sheep, Zebrafish (Danio rerio)
Host:	Rabbit
Clonality:	Polyclonal
Conjugate:	This Foxo6 antibody is un-conjugated
Application:	Western Blotting (WB)

Product Details

Immunogen:	The immunogen is a synthetic peptide directed towards the middle region of human FOXO6
Sequence:	LSYADLITKA IESAPDKRLT LSQIYDWMVR YVPYFKDKGD SNSSAGWKNS
Predicted Reactivity:	Cow: 100%, Dog: 100%, Guinea Pig: 100%, Horse: 93%, Human: 100%, Mouse: 100%, Rabbit: 93%, Rat: 100%, Sheep: 100%, Zebrafish: 93%
Characteristics:	This is a rabbit polyclonal antibody against FOXO6. It was validated on Western Blot.
Purification:	Affinity Purified

Target Details

Target:	Foxo6
Alternative Name:	FOXO6 (Foxo6 Products)

Target Details

Background: The function of this protein remains unknown.
Protein Size: 559

Molecular Weight: 61 kDa

UniProt: [A8MYZ6](#)

Pathways: [Regulation of Muscle Cell Differentiation](#)

Application Details

Restrictions: For Research Use only

Handling

Format: Liquid

Concentration: 1 mg/mL

Buffer: Liquid. Purified antibody supplied in 1x PBS buffer with 0.09 % (w/v) sodium azide and 2 % sucrose.

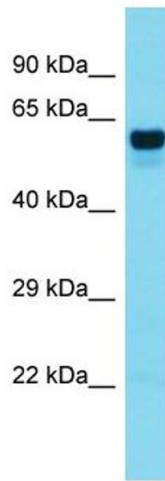
Preservative: Sodium azide

Precaution of Use: This product contains Sodium azide: a POISONOUS AND HAZARDOUS SUBSTANCE which should be handled by trained staff only.

Handling Advice: Avoid repeat freeze-thaw cycles.

Storage: -20 °C

Storage Comment: For short term use, store at 2-8°C up to 1 week. For long term storage, store at -20°C in small aliquots to prevent freeze-thaw cycles.



Western Blotting

Image 1. Host: Rabbit Target Name: FOXO6 Sample Type: Colorectal Tumor lysates Antibody Dilution: 1.0ug/ml