



[Go to Product page](#)

Datasheet for ABIN2779465  
**anti-WNT1 antibody (Middle Region)**

4 Images

Overview

Quantity:	100 µL
Target:	WNT1
Binding Specificity:	Middle Region
Reactivity:	Human, Mouse, Rat, Cow, Dog, Horse, Rabbit, Guinea Pig, Zebrafish (Danio rerio)
Host:	Rabbit
Clonality:	Polyclonal
Conjugate:	This WNT1 antibody is un-conjugated
Application:	Western Blotting (WB)

Product Details

Immunogen:	The immunogen is a synthetic peptide directed towards the middle region of human WNT1
Sequence:	FGREFVDSGE KGRDLRFLMN LHNNEAGR TT VFSEMRQECK CHGMSGCTV
Predicted Reactivity:	Cow: 100%, Dog: 100%, Guinea Pig: 100%, Horse: 100%, Human: 100%, Mouse: 100%, Rabbit: 100%, Rat: 100%, Zebrafish: 79%
Characteristics:	This is a rabbit polyclonal antibody against WNT1. It was validated on Western Blot using a cell lysate as a positive control.
Purification:	Affinity Purified

Target Details

Target:	WNT1
---------	------

## Target Details

---

Alternative Name: [WNT1 \(WNT1 Products\)](#)

---

Background: WNT1 is a member of the WNT gene family. The WNT gene family consists of structurally related genes which encode secreted signaling proteins. These proteins have been implicated in oncogenesis and in several developmental processes, including regulation of cell fate and patterning during embryogenesis. WNT1 is very conserved in evolution, and it is known to be 98 % identical to the mouse Wnt1 protein at the amino acid level. The studies in mouse indicate that the Wnt1 protein functions in the induction of the mesencephalon and cerebellum. WNT1 was originally considered as a candidate gene for Joubert syndrome, an autosomal recessive disorder with cerebellar hypoplasia as a leading feature. However, further studies suggested that the gene mutations might not have a significant role in Joubert syndrome. WNT1 is clustered with another family member, WNT10B, in the chromosome 12q13 region. The WNT gene family consists of structurally related genes which encode secreted signaling proteins. These proteins have been implicated in oncogenesis and in several developmental processes, including regulation of cell fate and patterning during embryogenesis. This gene is a member of the WNT gene family. It is very conserved in evolution, and the protein encoded by this gene is known to be 98 % identical to the mouse Wnt1 protein at the amino acid level. The studies in mouse indicate that the Wnt1 protein functions in the induction of the mesencephalon and cerebellum. This gene was originally considered as a candidate gene for Joubert syndrome, an autosomal recessive disorder with cerebellar hypoplasia as a leading feature. However, further studies suggested that the gene mutations might not have a significant role in Joubert syndrome. This gene is clustered with another family member, WNT10B, in the chromosome 12q13 region. Publication Note: This RefSeq record includes a subset of the publications that are available for this gene. Please see the Entrez Gene record to access additional publications.

Alias Symbols: INT1

Protein Interaction Partner: FZD8, LRP6, POLR2C, ROR2, WIF1, SFRP2, SFRP1, PORCN, WNT3A, LRP5, FZD9, RYK,

Protein Size: 370

---

Molecular Weight: 38 kDa

---

Gene ID: 7471

---

NCBI Accession: [NM\\_005430](#), [NP\\_005421](#)

---

UniProt: [P04628](#)

---

Pathways: [WNT Signaling](#), [Dopaminergic Neurogenesis](#)

---

## Application Details

Application Notes: Optimal working dilutions should be determined experimentally by the investigator.

Comment: Antigen size: 370 AA

Restrictions: For Research Use only

## Handling

Format: Liquid

Concentration: Lot specific

Buffer: Liquid. Purified antibody supplied in 1x PBS buffer with 0.09 % (w/v) sodium azide and 2 % sucrose.

Preservative: Sodium azide

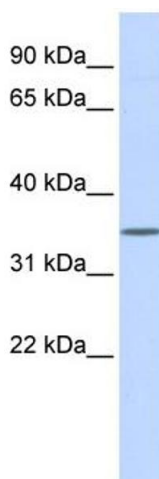
Precaution of Use: This product contains Sodium azide: a POISONOUS AND HAZARDOUS SUBSTANCE which should be handled by trained staff only.

Handling Advice: Avoid repeated freeze-thaw cycles.

Storage: -20 °C

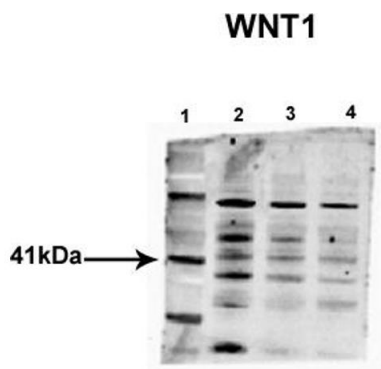
Storage Comment: For short term use, store at 2-8°C up to 1 week. For long term storage, store at -20°C in small aliquots to prevent freeze-thaw cycles.

## Images



### Western Blotting

**Image 1.** WB Suggested Anti-WNT1 Antibody Titration: 0.2-1 ug/ml ELISA Titer: 1:62500 Positive Control: Human Muscle



See Immunoblot 2 Data and Customer Feedback tab for more information.

### Western Blotting

**Image 2. Sample Type:** 1. Molecular Weight  
2. Control (20ug)  
3. shRNA1-WNT1 H9 hES cells (20ug)  
4. shRNA2-WNT1 H9 hES cells (20ug)

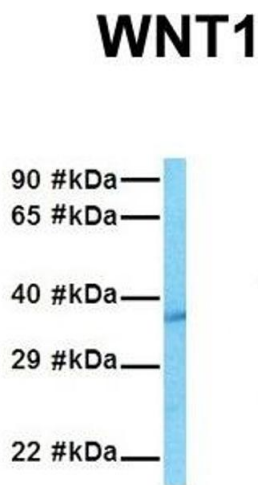
**Primary Dilution:** 1:1000

**Secondary Antibody:** anti-Rabbit HRP

**Secondary Dilution:** 1:5000

**Image Submitted By:** Jingli Cai

Thomas Jefferson University



### Western Blotting

**Image 3.** Host: Rabbit Target Name: WNT1 Sample Tissue:  
Human HepG2 Antibody Dilution: 1.0ug/ml

Please check the [product details page](#) for more images. Overall 4 images are available for ABIN2779465.