



[Go to Product page](#)

Datasheet for ABIN2779467

anti-WNT2 antibody (Middle Region)

1 Image

Overview

Quantity:	100 µL
Target:	WNT2
Binding Specificity:	Middle Region
Reactivity:	Human, Mouse, Rat, Dog, Guinea Pig, Horse, Rabbit, Sheep, Cow, Zebrafish (Danio rerio)
Host:	Rabbit
Clonality:	Polyclonal
Conjugate:	This WNT2 antibody is un-conjugated
Application:	Western Blotting (WB)

Product Details

Immunogen:	The immunogen is a synthetic peptide directed towards the middle region of human WNT2
Sequence:	GSAKDSKGIF DWGGCSDNID YGIKFARAFV DAKERKKGKDA RALMNLHNNR
Predicted Reactivity:	Cow: 100%, Dog: 100%, Guinea Pig: 100%, Horse: 100%, Human: 100%, Mouse: 100%, Rabbit: 100%, Rat: 100%, Sheep: 100%, Zebrafish: 87%
Characteristics:	This is a rabbit polyclonal antibody against WNT2. It was validated on Western Blot using a cell lysate as a positive control.
Purification:	Affinity Purified

Target Details

Target:	WNT2
---------	------

Target Details

Alternative Name: [WNT2 \(WNT2 Products\)](#)

Background: WNT2 is the ligand for members of the frizzled family of seven transmembrane receptors. WNT2 is a probable developmental protein. WNT2 may be a signaling molecule which affects the development of discrete regions of tissues. WNT2 is likely to signal over only few cell diameters. The WNT gene family consists of structurally related genes which encode secreted signaling proteins. These proteins have been implicated in oncogenesis and in several developmental processes, including regulation of cell fate and patterning during embryogenesis. This gene is a member of the WNT gene family, and is expressed in the thalamus. It encodes a protein which shows 96 % amino acid identity to the mouse Wnt2 protein. Based on the map location of this gene in the 7q31 region, and the phenotype of the diminished social interaction in the knockout mouse, this gene is suggested as a strong candidate gene for autism, a prototypical pervasive development disorder. Publication Note: This RefSeq record includes a subset of the publications that are available for this gene. Please see the Entrez Gene record to access additional publications.

Alias Symbols: INT1L1, IRP

Protein Interaction Partner: RRAGC, UQCR11, HCK, AQP5, SFRP1, WNT3A, FZD1, FZD9,

Protein Size: 360

Molecular Weight: 38 kDa

Gene ID: 7472

NCBI Accession: [NM_003391](#), [NP_003382](#)

UniProt: [P09544](#)

Pathways: [WNT Signaling](#)

Application Details

Application Notes: Optimal working dilutions should be determined experimentally by the investigator.

Comment: Antigen size: 360 AA

Restrictions: For Research Use only

Handling

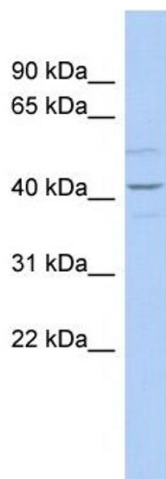
Format: Liquid

Concentration: Lot specific

Handling

Buffer:	Liquid. Purified antibody supplied in 1x PBS buffer with 0.09 % (w/v) sodium azide and 2 % sucrose.
Preservative:	Sodium azide
Precaution of Use:	This product contains Sodium azide: a POISONOUS AND HAZARDOUS SUBSTANCE which should be handled by trained staff only.
Handling Advice:	Avoid repeated freeze-thaw cycles.
Storage:	-20 °C
Storage Comment:	For short term use, store at 2-8°C up to 1 week. For long term storage, store at -20°C in small aliquots to prevent freeze-thaw cycles.

Images



Western Blotting

Image 1. WB Suggested Anti-WNT2 Antibody Titration: 0.2-1 ug/ml ELISA Titer: 1:1562500 Positive Control: THP-1 cell lysate