

Datasheet for ABIN2779472
anti-MYF6 antibody (N-Term)

3 Images

[Go to Product page](#)

Overview

| | |
|----------------------|--|
| Quantity: | 100 µL |
| Target: | MYF6 |
| Binding Specificity: | N-Term |
| Reactivity: | Human, Mouse, Rat, Cow, Sheep, Goat, Horse, Rabbit, Dog, Guinea Pig, Zebrafish (Danio rerio) |
| Host: | Rabbit |
| Clonality: | Polyclonal |
| Conjugate: | This MYF6 antibody is un-conjugated |
| Application: | Western Blotting (WB), Immunohistochemistry (IHC) |

Product Details

| | |
|-----------------------|--|
| Immunogen: | The immunogen is a synthetic peptide directed towards the N terminal region of human MYF6 |
| Sequence: | PGLQPPHCPG QCLIWACKTC KRKSAPTD RR KAATLRERRR LKKINEAFE A |
| Predicted Reactivity: | Cow: 100%, Dog: 100%, Goat: 100%, Guinea Pig: 100%, Horse: 100%, Human: 100%, Mouse: 100%, Rabbit: 100%, Rat: 100%, Sheep: 100%, Zebrafish: 100% |
| Characteristics: | This is a rabbit polyclonal antibody against MYF6. It was validated on Western Blot and immunohistochemistry. |
| Purification: | Affinity Purified |

Target Details

| | |
|---------|------|
| Target: | MYF6 |
|---------|------|

Target Details

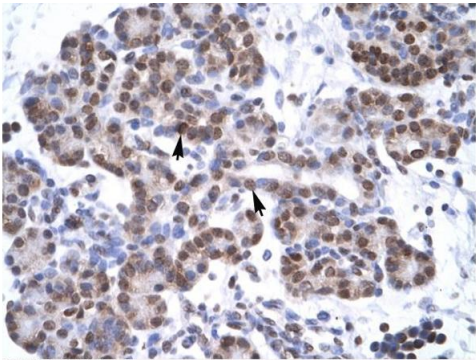
| | |
|-------------------|--|
| Alternative Name: | MYF6 (MYF6 Products) |
| Background: | <p>MYF6 is a part of the myogenic basic helix-loop-helix family of transcription factors, and can activate the muscle differentiation program.</p> <p>Alias Symbols: MRF4, CNM3, myf-6, bHLHc4</p> <p>Protein Interaction Partner: ID1, CSRP3, ID2, ID3, CALM3, CALM1, ELSPBP1, TCF3,</p> <p>Protein Size: 242</p> |
| Molecular Weight: | 27 kDa |
| Gene ID: | 4618 |
| NCBI Accession: | NM_002469 , NP_002460 |
| UniProt: | P23409 |
| Pathways: | Regulation of Muscle Cell Differentiation |

Application Details

| | |
|--------------------|--|
| Application Notes: | Optimal working dilutions should be determined experimentally by the investigator. |
| Comment: | Antigen size: 242 AA |
| Restrictions: | For Research Use only |

Handling

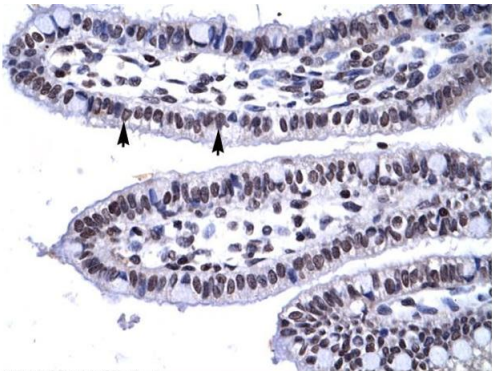
| | |
|--------------------|---|
| Format: | Liquid |
| Concentration: | Lot specific |
| Buffer: | Liquid. Purified antibody supplied in 1x PBS buffer with 0.09 % (w/v) sodium azide and 2 % sucrose. |
| Preservative: | Sodium azide |
| Precaution of Use: | This product contains Sodium azide: a POISONOUS AND HAZARDOUS SUBSTANCE which should be handled by trained staff only. |
| Handling Advice: | Avoid repeated freeze-thaw cycles. |
| Storage: | -20 °C |
| Storage Comment: | For short term use, store at 2-8°C up to 1 week. For long term storage, store at -20°C in small aliquots to prevent freeze-thaw cycles. |



Rabbit Anti-MYF6 Antibody
Catalog Number: ARP32135
Lot Number: QC1635
Paraffin Embedded Tissue: Human Pancreas
Cells with Positive label: Epithelial cells of pancreatic acinus(Indicated with Arrows)
Antibody Concentration: 4.0-8.0 µg/ml
Magnification: 400X

Immunohistochemistry

Image 1. Human Pancreas



Rabbit Anti-MYF6 Antibody
Catalog Number: ARP32135
Lot Number: QC1635
Paraffin Embedded Tissue: Human Intestine
Cells with Positive label: Epithelial cells of intestinal villus (Indicated with Arrows)
Antibody Concentration: 4.0-8.0 µg/ml
Magnification: 400X

Immunohistochemistry

Image 2. Human Intestine



Western Blotting

Image 3. WB Suggested Anti-MYF6 Antibody Titration: 0.2-1 ug/ml ELISA Titer: 1:12500 Positive Control: Human heart