

Datasheet for ABIN2779478
anti-ERCC8 antibody (N-Term)[Go to Product page](#)

3 Images

Overview

Quantity:	100 µL
Target:	ERCC8
Binding Specificity:	N-Term
Reactivity:	Human, Mouse, Rat, Dog, Rabbit, Cow, Pig, Guinea Pig, Zebrafish (Danio rerio)
Host:	Rabbit
Clonality:	Polyclonal
Conjugate:	This ERCC8 antibody is un-conjugated
Application:	Western Blotting (WB), Immunohistochemistry (IHC)

Product Details

Immunogen:	The immunogen is a synthetic peptide directed towards the N terminal region of human ERCC8
Sequence:	DVERIHGGGI NTLDIEPVEG RYMLSGGSDG VIVLYDLENS SRQSYTCKA
Predicted Reactivity:	Cow: 77%, Dog: 85%, Guinea Pig: 77%, Human: 100%, Mouse: 85%, Pig: 85%, Rabbit: 85%, Rat: 77%, Zebrafish: 85%
Characteristics:	This is a rabbit polyclonal antibody against ERCC8. It was validated on Western Blot using a cell lysate as a positive control.
Purification:	Affinity Purified

Target Details

Target:	ERCC8
---------	-------

Target Details

Alternative Name:	ERCC8 (ERCC8 Products)
Background:	<p>ERCC8 is a WD repeat protein, which interacts with Cockayne syndrome type B (CSB) protein and with p44 protein, a subunit of the RNA polymerase II transcription factor IIH. Mutations in this gene have been identified in patients with hereditary disease Cockayne syndrome (CS).</p> <p>This gene encodes a WD repeat protein, which interacts with Cockayne syndrome type B (CSB) protein and with p44 protein, a subunit of the RNA polymerase II transcription factor IIH. Mutations in this gene have been identified in patients with hereditary disease Cockayne syndrome (CS). CS cells are abnormally sensitive to ultraviolet radiation and are defective in the repair of transcriptionally active genes.</p> <p>Alias Symbols: CKN1, CSA</p> <p>Protein Interaction Partner: CUL4A, CUL4B, DDB1, RUVBL2, ZNF24, PCNA, H1F0, ERCC6, UVSSA, DDA1, RFWD2, COPS4, COPS6, COPS3, TOP1, TP53, SSBP1, OGG1, MDM2, GTF2H2, CUL5, GPS1, DDB2, COPS2, COPS7A, COPS5, COPS8, RBX1, POLR2A, HMGN1, EP300, UBC, CSNK2B, XAB2, UQCRQ, CBR1,</p> <p>Protein Size: 396</p>
Molecular Weight:	44 kDa
Gene ID:	1161
NCBI Accession:	NM_000082 , NP_000073
UniProt:	Q13216
Pathways:	DNA Damage Repair , Positive Regulation of Response to DNA Damage Stimulus

Application Details

Application Notes:	Optimal working dilutions should be determined experimentally by the investigator.
Comment:	Antigen size: 396 AA
Restrictions:	For Research Use only

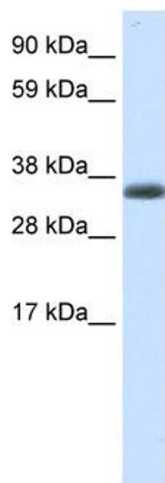
Handling

Format:	Liquid
Concentration:	Lot specific
Buffer:	Liquid. Purified antibody supplied in 1x PBS buffer with 0.09 % (w/v) sodium azide and 2 % sucrose.

Handling

Preservative:	Sodium azide
Precaution of Use:	This product contains Sodium azide: a POISONOUS AND HAZARDOUS SUBSTANCE which should be handled by trained staff only.
Handling Advice:	Avoid repeated freeze-thaw cycles.
Storage:	-20 °C
Storage Comment:	For short term use, store at 2-8°C up to 1 week. For long term storage, store at -20°C in small aliquots to prevent freeze-thaw cycles.

Images



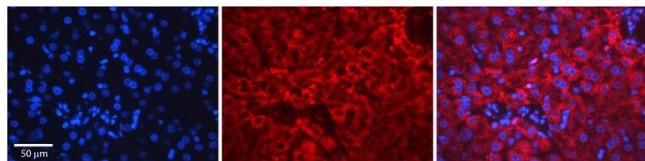
Western Blotting

Image 1. WB Suggested Anti-ERCC8 Antibody Titration: 0.2-1 ug/ml Positive Control: Human muscle



Western Blotting

Image 2. WB Suggested Anti-ERCC8 antibody Titration: 1 ug/mL Sample Type: Human liver



Immunohistochemistry

Image 3. Rabbit Anti-ERCC8 Antibody Formalin Fixed Paraffin Embedded Tissue: Human Adult liver Observed Staining: Cytoplasmic,Nuclear Primary Antibody Concentration: 1:600 Secondary Antibody: Donkey anti-Rabbit-Cy2/3 Secondary Antibody Concentration: 1:200 Magnification: 20X Exposure Time: 0.5 – 2.0 sec Protocol located in Reviews and Data.