



[Go to Product page](#)

Datasheet for ABIN2779494
anti-KLF3 antibody (N-Term)

1 Image

Overview

Quantity:	100 µL
Target:	KLF3
Binding Specificity:	N-Term
Reactivity:	Human, Mouse, Rat, Cow, Horse, Dog, Rabbit, Guinea Pig
Host:	Rabbit
Clonality:	Polyclonal
Conjugate:	This KLF3 antibody is un-conjugated
Application:	Western Blotting (WB)

Product Details

Immunogen:	The immunogen is a synthetic peptide directed towards the N terminal region of human KLF3
Sequence:	LSHGIQMEPV DLTVNRSSP PSAGNSPSSL KFPSSHRRAS PGLSMPSSSP
Predicted Reactivity:	Cow: 100%, Dog: 93%, Guinea Pig: 100%, Horse: 100%, Human: 100%, Mouse: 86%, Rabbit: 100%, Rat: 92%
Characteristics:	This is a rabbit polyclonal antibody against KLF3. It was validated on Western Blot using a cell lysate as a positive control.
Purification:	Protein A purified

Target Details

Target:	KLF3
---------	------

Target Details

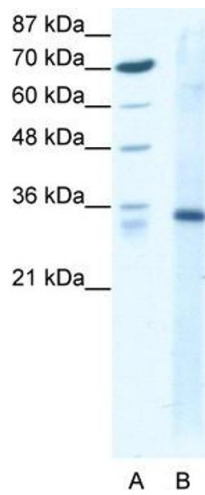
Alternative Name:	KLF3 (KLF3 Products)
Background:	<p>KLF3 is a zinc finger transcription factor that is known to function as a potent transcriptional repressor</p> <p>Alias Symbols: BKLF</p> <p>Protein Interaction Partner: LHX8, EHMT2, TRAF2, FHL3, DVL3, CTBP1, SUV39H2, KDM1A, SUMO2, CTBP2,</p> <p>Protein Size: 345</p>
Molecular Weight:	39 kDa
Gene ID:	51274
NCBI Accession:	NM_016531 , NP_057615
UniProt:	P57682

Application Details

Application Notes:	Optimal working dilutions should be determined experimentally by the investigator.
Comment:	Antigen size: 345 AA
Restrictions:	For Research Use only

Handling

Format:	Liquid
Concentration:	Lot specific
Buffer:	Liquid. Purified antibody supplied in 1x PBS buffer with 0.09 % (w/v) sodium azide and 2 % sucrose.
Preservative:	Sodium azide
Precaution of Use:	This product contains Sodium azide: a POISONOUS AND HAZARDOUS SUBSTANCE which should be handled by trained staff only.
Handling Advice:	Avoid repeated freeze-thaw cycles.
Storage:	-20 °C
Storage Comment:	For short term use, store at 2-8°C up to 1 week. For long term storage, store at -20°C in small aliquots to prevent freeze-thaw cycles.



Western Blotting

Image 1. WB Suggested Anti-KLF3 Antibody Titration: 1.25ug/ml Positive Control: HepG2 cell lysate KLF3 is supported by BioGPS gene expression data to be expressed in HepG2