

Datasheet for ABIN2779495  
**anti-KLF3 antibody (C-Term)**



[Go to Product page](#)

1 Image

## Overview

Quantity:	100 µL
Target:	KLF3
Binding Specificity:	C-Term
Reactivity:	Human, Mouse, Rat, Cow, Horse, Rabbit, Dog, Guinea Pig, Pig
Host:	Rabbit
Clonality:	Polyclonal
Conjugate:	This KLF3 antibody is un-conjugated
Application:	Western Blotting (WB)

## Product Details

Immunogen:	The immunogen is a synthetic peptide directed towards the C-terminal region of Human KLF3
Sequence:	SHLQQPLMVS LSEEMENSSS SMQVPVIESY EKPISQKKIK IEPGIEPQRT
Predicted Reactivity:	Cow: 100%, Dog: 100%, Guinea Pig: 93%, Horse: 100%, Human: 100%, Mouse: 100%, Pig: 100%, Rabbit: 100%, Rat: 100%
Characteristics:	This is a rabbit polyclonal antibody against KLF3. It was validated on Western Blot.
Purification:	Affinity Purified

## Target Details

Target:	KLF3
Alternative Name:	KLF3 ( <a href="#">KLF3 Products</a> )

## Target Details

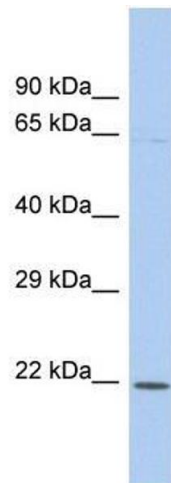
Background:	KLF3 binds to the CACCC box of erythroid cell-expressed genes and may play a role in hematopoiesis. Alias Symbols: BKLF Protein Interaction Partner: LHX8, EHMT2, TRAF2, FHL3, DVL3, CTBP1, SUV39H2, KDM1A, SUMO2, CTBP2, Protein Size: 232
Molecular Weight:	25 kDa
Gene ID:	51274
NCBI Accession:	<a href="#">NM_016531</a> , <a href="#">NP_057615</a>

## Application Details

Application Notes:	Optimal working dilution should be determined by the investigator.
Restrictions:	For Research Use only

## Handling

Format:	Liquid
Concentration:	1 mg/mL
Buffer:	Liquid. Purified antibody supplied in 1x PBS buffer with 0.09 % (w/v) sodium azide and 2 % sucrose.
Preservative:	Sodium azide
Precaution of Use:	This product contains Sodium azide: a POISONOUS AND HAZARDOUS SUBSTANCE which should be handled by trained staff only.
Handling Advice:	Avoid repeat freeze-thaw cycles.
Storage:	-20 °C
Storage Comment:	For short term use, store at 2-8°C up to 1 week. For long term storage, store at -20°C in small aliquots to prevent freeze-thaw cycles.



Western Blotting

**Image 1.** Host: Rabbit Target Name: KLF3 Sample Type: THP-1 Whole Cell lysates Antibody Dilution: 1.0ug/ml