

Datasheet for ABIN2779505  
**anti-GSX2 antibody (N-Term)**[Go to Product page](#)

## 4 Images

## Overview

Quantity:	100 µL
Target:	GSX2
Binding Specificity:	N-Term
Reactivity:	Human, Mouse, Dog, Rat, Rabbit, Cow, Horse, Guinea Pig, Pig
Host:	Rabbit
Clonality:	Polyclonal
Conjugate:	This GSX2 antibody is un-conjugated
Application:	Western Blotting (WB), Immunohistochemistry (IHC)

## Product Details

Immunogen:	The immunogen is a synthetic peptide directed towards the N terminal region of human GSH2
Sequence:	MSRSFYVDSL IIKDTSRPAP SLPEHPGPD FFIPLGMPPP LVMSVSGPGC
Predicted Reactivity:	Cow: 100%, Dog: 100%, Guinea Pig: 93%, Horse: 100%, Human: 100%, Mouse: 93%, Pig: 100%, Rabbit: 100%, Rat: 93%
Characteristics:	This is a rabbit polyclonal antibody against GSH2. It was validated on Western Blot and immunohistochemistry.
Purification:	Affinity Purified

## Target Details

Target:	GSX2
---------	------

## Target Details

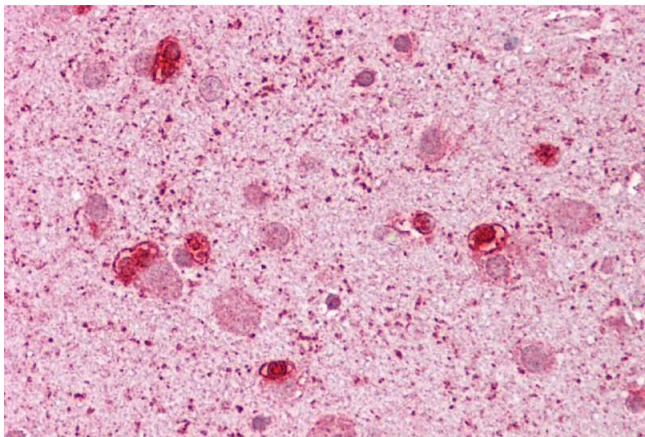
Alternative Name:	GSH2 ( <a href="#">GSX2 Products</a> )
Background:	Homeobox protein GSH-2 Alias Symbols: GSH2 Protein Size: 304
Molecular Weight:	32 kDa
Gene ID:	170825
NCBI Accession:	<a href="#">NM_133267</a> , <a href="#">NP_573574</a>
UniProt:	<a href="#">Q9BZM3</a>

## Application Details

Application Notes:	Optimal working dilutions should be determined experimentally by the investigator.
Comment:	Antigen size: 304 AA
Restrictions:	For Research Use only

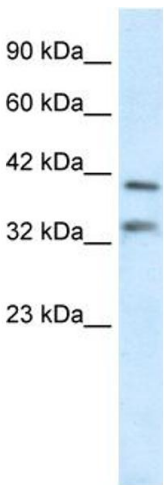
## Handling

Format:	Liquid
Concentration:	Lot specific
Buffer:	Liquid. Purified antibody supplied in 1x PBS buffer with 0.09 % (w/v) sodium azide and 2 % sucrose.
Preservative:	Sodium azide
Precaution of Use:	This product contains Sodium azide: a POISONOUS AND HAZARDOUS SUBSTANCE which should be handled by trained staff only.
Handling Advice:	Avoid repeated freeze-thaw cycles.
Storage:	-20 °C
Storage Comment:	For short term use, store at 2-8°C up to 1 week. For long term storage, store at -20°C in small aliquots to prevent freeze-thaw cycles.



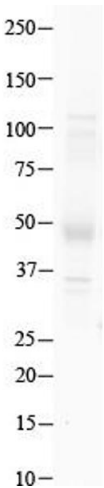
#### Immunohistochemistry

**Image 1.** Immunohistochemistry with Brain, cortex tissue at an antibody concentration of 5µg/ml using anti-GSH2 antibody (ARP32208\_P050)



#### Western Blotting

**Image 2.** WB Suggested Anti-GSH2 Antibody Titration: 0.2-1 µg/ml ELISA Titer: 1:62500 Positive Control: Human Liver



#### Western Blotting

**Image 3.** Host: Rabbit Target Name: GSH2 Sample Type: Human Testis Antibody Dilution: 1.0ug/ml

Please check the [product details page](#) for more images. Overall 4 images are available for ABIN2779505.