



[Go to Product page](#)

Datasheet for ABIN2779507
anti-DLX2 antibody (C-Term)

3 Images

Overview

| | |
|----------------------|---|
| Quantity: | 100 µL |
| Target: | DLX2 |
| Binding Specificity: | C-Term |
| Reactivity: | Human, Mouse, Rat, Cow, Dog, Guinea Pig |
| Host: | Rabbit |
| Clonality: | Polyclonal |
| Conjugate: | This DLX2 antibody is un-conjugated |
| Application: | Western Blotting (WB), Immunohistochemistry (IHC) |

Product Details

| | |
|-----------------------|---|
| Immunogen: | The immunogen is a synthetic peptide directed towards the C terminal region of human DLX2 |
| Sequence: | PASWDFGVQPQ RMAGGGGPGS GGSGAGSSGS SPSSAASAFL GNYPWYHQTS |
| Predicted Reactivity: | Cow: 100%, Dog: 100%, Guinea Pig: 100%, Human: 100%, Mouse: 100%, Rat: 100% |
| Characteristics: | This is a rabbit polyclonal antibody against DLX2. It was validated on Western Blot and immunohistochemistry. |
| Purification: | Protein A purified |

Target Details

| | |
|-------------------|--|
| Target: | DLX2 |
| Alternative Name: | DLX2 (DLX2 Products) |

Target Details

Background: Many vertebrate homeo box-containing genes have been identified on the basis of their sequence similarity with Drosophila developmental genes. Members of the Dlx gene family contain a homeobox that is related to that of Distal-less (Dll), a gene expressed in the head and limbs of the developing fruit fly. The Distal-less (Dlx) family of genes comprises at least 6 different members, DLX1-DLX6. The DLX proteins are postulated to play a role in forebrain and craniofacial development.

Alias Symbols: TES-1, TES1

Protein Interaction Partner: GRN, PARK2, AVP, MVP, BZRAP1, DGCR6, PIK3R1, SUMO3, UBC, NCOA2, DIP2A, MSX2, MSX1, HOXC8, DLX5, DLX2, XRCC6,

Protein Size: 244

Molecular Weight: 27 kDa

Gene ID: 1746

NCBI Accession: [NM_004405](#)

UniProt: [Q07687](#)

Application Details

Application Notes: Optimal working dilutions should be determined experimentally by the investigator.

Comment: Antigen size: 244 AA

Restrictions: For Research Use only

Handling

Format: Liquid

Concentration: Lot specific

Buffer: Liquid. Purified antibody supplied in 1x PBS buffer with 0.09 % (w/v) sodium azide and 2 % sucrose.

Preservative: Sodium azide

Precaution of Use: This product contains Sodium azide: a POISONOUS AND HAZARDOUS SUBSTANCE which should be handled by trained staff only.

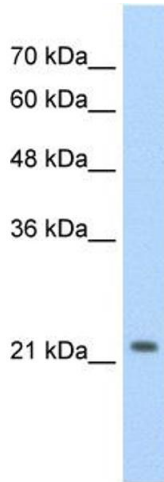
Handling Advice: Avoid repeated freeze-thaw cycles.

Storage: -20 °C

Handling

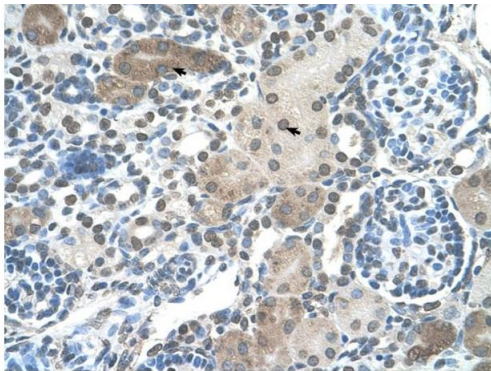
Storage Comment: For short term use, store at 2-8°C up to 1 week. For long term storage, store at -20°C in small aliquots to prevent freeze-thaw cycles.

Images



Western Blotting

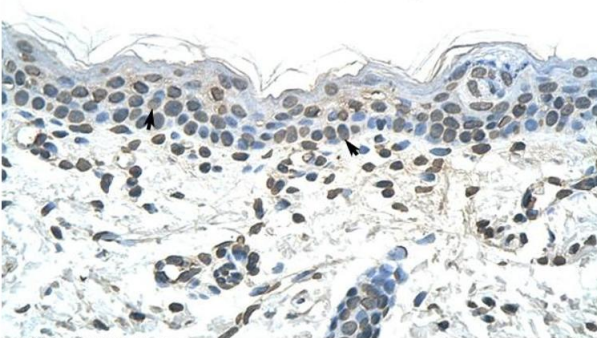
Image 1. WB Suggested Anti-DLX2 Antibody Titration: 2.5ug/ml Positive Control: HepG2 cell lysate



Rabbit Anti-DLX2 Antibody
Catalog Number: ARP32212
Lot Number: QC11860
Paraffin Embedded Tissue: Human Kidney
Cells with Positive label: Epithelial cells of renal tubule (Indicated with Arrows)
Antibody Concentration: 4.0-8.0 µg/ml
Magnification: 400X

Immunohistochemistry

Image 2. Human kidney



Rabbit Anti-DLX2 Antibody
Catalog Number: ARP32212
Lot Number: QC11860
Paraffin Embedded Tissue: Human Skin
Cells with Positive label: Squamous epithelial cells (Indicated with Arrows)
Antibody Concentration: 4.0-8.0 µg/ml
Magnification: 400X

Immunohistochemistry

Image 3. Human Skin