



[Go to Product page](#)

Datasheet for ABIN2779510

anti-E2F6 antibody (Middle Region)

2 Images

1 Publication

Overview

Quantity:	100 µL
Target:	E2F6
Binding Specificity:	Middle Region
Reactivity:	Human, Mouse, Rat, Cow, Pig, Dog, Guinea Pig, Horse
Host:	Rabbit
Clonality:	Polyclonal
Conjugate:	This E2F6 antibody is un-conjugated
Application:	Western Blotting (WB), Immunohistochemistry (IHC)

Product Details

Immunogen:	The immunogen is a synthetic peptide directed towards the middle region of human E2F6
Sequence:	HEQIVIAVKA PAETRLDVPA PREDSTVHI RSTNGPIDVY LCEVEQGQTS
Predicted Reactivity:	Cow: 92%, Dog: 100%, Guinea Pig: 85%, Horse: 100%, Human: 100%, Mouse: 100%, Pig: 100%, Rat: 100%
Characteristics:	This is a rabbit polyclonal antibody against E2F6. It was validated on Western Blot using a cell lysate as a positive control.
Purification:	Protein A purified

Target Details

Target:	E2F6
---------	------

Target Details

Alternative Name: E2F6 ([E2F6 Products](#))

Background: E2F6 is a member of the E2F transcription factor protein family. E2F family members play a crucial role in control of the cell cycle and of the action of tumor suppressor proteins. They are also a target of the transforming proteins of small DNA tumor viruses. Many E2F proteins contain several evolutionarily conserved domains: a DNA binding domain, a dimerization domain which determines interaction with the differentiation regulated transcription factor proteins (DP), a transactivation domain enriched in acidic amino acids, and a tumor suppressor protein association domain which is embedded within the transactivation domain. The encoded protein of this gene is atypical because it lacks the transactivation and tumor suppressor protein association domains. It contains a modular suppression domain and is an inhibitor of E2F-dependent transcription. The protein is part of a multimeric protein complex that contains a histone methyltransferase and the transcription factors Mga and Max. Multiple transcript variants encoding several different isoforms have been found for this gene.

Protein Interaction Partner: TFDP2, TFDP1, KRTAP10-7, LYN, ARAF, APP, PCGF6, RYBP, YAF2, RNF2, SMARCAD1, UBC, L3MBTL2, EZH2, Epc1, EED, KMT2D, KMT2A, RING1, E2F1, BMI1, ZMYND8, ZMYND11, KDM5C, EZH1, CBX3, E2F6,

Protein Size: 129

Molecular Weight: 14 kDa

Gene ID: 1876

NCBI Accession: [NM_212540](#), [NP_997705](#)

UniProt: [Q6Q9Z5](#)

Application Details

Application Notes: Optimal working dilutions should be determined experimentally by the investigator.

Comment: Antigen size: 129 AA

Restrictions: For Research Use only

Handling

Format: Liquid

Concentration: Lot specific

Buffer: Liquid. Purified antibody supplied in 1x PBS buffer with 0.09 % (w/v) sodium azide and 2 % sucrose.

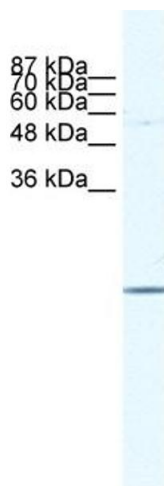
Handling

Preservative:	Sodium azide
Precaution of Use:	This product contains Sodium azide: a POISONOUS AND HAZARDOUS SUBSTANCE which should be handled by trained staff only.
Handling Advice:	Avoid repeated freeze-thaw cycles.
Storage:	-20 °C
Storage Comment:	For short term use, store at 2-8°C up to 1 week. For long term storage, store at -20°C in small aliquots to prevent freeze-thaw cycles.

Publications

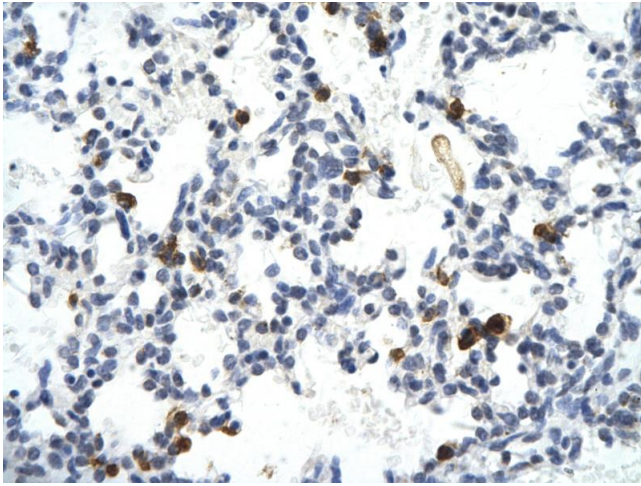
Product cited in:	Sugatani, Nishitani, Yamakawa, Yoshinari, Sueyoshi, Negishi, Miwa: "Transcriptional regulation of human UGT1A1 gene expression: activated glucocorticoid receptor enhances constitutive androstane receptor/pregnane X receptor-mediated UDP-glucuronosyltransferase 1A1 regulation with glucocorticoid receptor-interacting protei" in: Molecular pharmacology , Vol. 67, Issue 3, pp. 845-55, (2005) (PubMed).
-------------------	---

Images



Western Blotting

Image 1. WB Suggested Anti-E2F6 Antibody Titration: 1.25 ug/ml Positive Control: HepG2 Whole Cell E2F6 is supported by BioGPS gene expression data to be expressed in HepG2



Immunohistochemistry

Image 2. Rabbit Anti-E2F6 antibody Paraffin Embedded
Tissue: Human Lung cell Cellular Data: Epithelial cells of
renal tubule Antibody Concentration: 4.0-8.0 ug/ml
Magnification: 400X