



[Go to Product page](#)

Datasheet for ABIN2779512
anti-SP7 antibody (N-Term)

3 Images

Overview

Quantity:	100 µL
Target:	SP7
Binding Specificity:	N-Term
Reactivity:	Human, Mouse, Rat, Rabbit, Cow, Horse, Pig, Guinea Pig, Dog
Host:	Rabbit
Clonality:	Polyclonal
Conjugate:	This SP7 antibody is un-conjugated
Application:	Western Blotting (WB), Immunohistochemistry (IHC)

Product Details

Immunogen:	The immunogen is a synthetic peptide directed towards the N terminal region of human SP7
Sequence:	MASSLLEEEV HYGSSPLAML TAACSKFGGS SPLRDSTTLG KAGTKKPYSV
Predicted Reactivity:	Cow: 100%, Dog: 93%, Guinea Pig: 86%, Horse: 100%, Human: 100%, Mouse: 93%, Pig: 100%, Rabbit: 93%, Rat: 86%
Characteristics:	This is a rabbit polyclonal antibody against SP7. It was validated on Western Blot using a cell lysate as a positive control.
Purification:	Affinity Purified

Target Details

Target:	SP7
---------	-----

Target Details

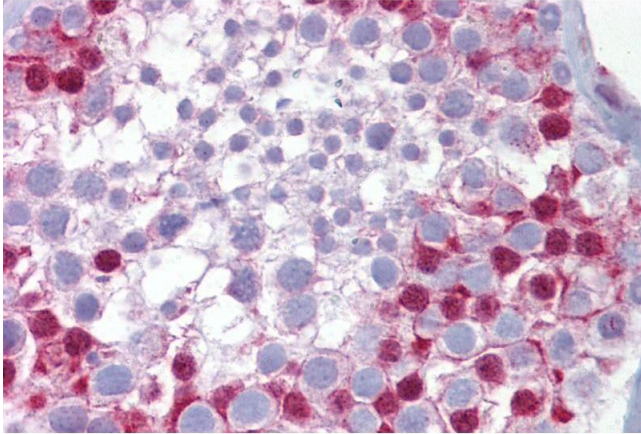
Alternative Name:	SP7 (SP7 Products)
Background:	SP7 is a C2H2-type zinc finger transcription factor of the SP gene family and a putative master regulator of bone cell differentiation. Alias Symbols: MGC126598, OSX, osterix, OI11, OI12 Protein Interaction Partner: UBC, Protein Size: 431
Molecular Weight:	45 kDa
Gene ID:	121340
NCBI Accession:	NM_152860 , NP_690599
UniProt:	Q8TDD2

Application Details

Application Notes:	Optimal working dilutions should be determined experimentally by the investigator.
Comment:	Antigen size: 431 AA
Restrictions:	For Research Use only

Handling

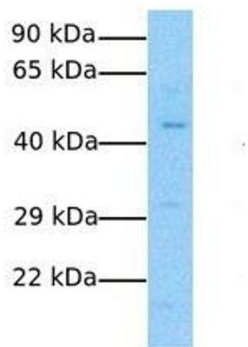
Format:	Liquid
Concentration:	Lot specific
Buffer:	Liquid. Purified antibody supplied in 1x PBS buffer with 0.09 % (w/v) sodium azide and 2 % sucrose.
Preservative:	Sodium azide
Precaution of Use:	This product contains Sodium azide: a POISONOUS AND HAZARDOUS SUBSTANCE which should be handled by trained staff only.
Handling Advice:	Avoid repeated freeze-thaw cycles.
Storage:	-20 °C
Storage Comment:	For short term use, store at 2-8°C up to 1 week. For long term storage, store at -20°C in small aliquots to prevent freeze-thaw cycles.



Immunohistochemistry

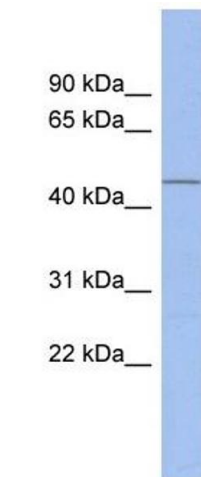
Image 1. Immunohistochemistry with Testis tissue at an antibody concentration of 5µg/ml using anti-SP7 antibody (ARP32231_P050)

SP7



Western Blotting

Image 2. Host: Rabbit Target Name: SP7 Sample Tissue: Human Fetal Lung Antibody Dilution: 1.0ug/ml



Western Blotting

Image 3. WB Suggested Anti-SP7 Antibody Titration: 0.2-1 ug/ml ELISA Titer: 1:312500 Positive Control: Human kidney