

Datasheet for ABIN2779517
anti-EGR1 antibody (N-Term)

4 Images

7 Publications

[Go to Product page](#)

Overview

Quantity:	100 µL
Target:	EGR1
Binding Specificity:	N-Term
Reactivity:	Human, Mouse, Rat, Cow, Horse, Rabbit, Pig
Host:	Rabbit
Clonality:	Polyclonal
Conjugate:	This EGR1 antibody is un-conjugated
Application:	Western Blotting (WB), Immunohistochemistry (IHC)

Product Details

Immunogen:	The immunogen is a synthetic peptide directed towards the N terminal region of human EGR1
Sequence:	DNYPKLEEMM LLSNGAPQL GAAGAPEGSG SNSSSSSSGG GGGGGGGSNS
Predicted Reactivity:	Cow: 87%, Horse: 93%, Human: 100%, Mouse: 86%, Pig: 100%, Rabbit: 86%, Rat: 93%
Characteristics:	This is a rabbit polyclonal antibody against EGR1. It was validated on Western Blot and immunohistochemistry.
Purification:	Affinity Purified

Target Details

Target:	EGR1
Alternative Name:	EGR1 (EGR1 Products)

Target Details

Background:	<p>Early Growth Response Protein 1 (EGR1, Krox-24 protein, nerve growth factor-induced protein A, Transcription factor ETR103, Zinc finger protein 225) belongs to the EGR family of C2H2-type zinc-finger proteins. It is a nuclear protein and functions as a transcriptional regulator. The products of target genes it activates are required for differentiation and mitogenesis. Studies suggest this is a cancer suppressor gene. The protein encoded by this gene belongs to the EGR family of C2H2-type zinc-finger proteins. It is a nuclear protein and functions as a transcriptional regulator. The products of target genes it activates are required for differentiation and mitogenesis. Studies suggest this is a cancer suppressor gene. Publication Note: This RefSeq record includes a subset of the publications that are available for this gene. Please see the Entrez Gene record to access additional publications.</p> <p>Alias Symbols: AT225, G0S30, KROX-24, NGFI-A, TIS8, ZIF-268, ZNF225</p> <p>Protein Interaction Partner: CEBPB, WT1, SUMO1, TP53, MDM2, EP300, CDKN2A, SRA1, IL1B, PTEN, SP1, SNAI1, TBX2, PFDN5, SREBF2, ERBB3, NAB2, PITX1, NAB1, NFATC2, CREBBP, PSMA3, JUN, RELA, CSNK2A1, NFATC1, GADD45B, GADD45A,</p> <p>Protein Size: 543</p>
Molecular Weight:	57 kDa
Gene ID:	1958
NCBI Accession:	NM_001964 , NP_001955
UniProt:	P18146
Pathways:	Regulation of Carbohydrate Metabolic Process , Regulation of long-term Neuronal Synaptic Plasticity

Application Details

Application Notes:	Optimal working dilutions should be determined experimentally by the investigator.
Comment:	Antigen size: 543 AA
Restrictions:	For Research Use only

Handling

Format:	Liquid
Concentration:	Lot specific
Buffer:	Liquid. Purified antibody supplied in 1x PBS buffer with 0.09 % (w/v) sodium azide and 2 % sucrose.

Handling

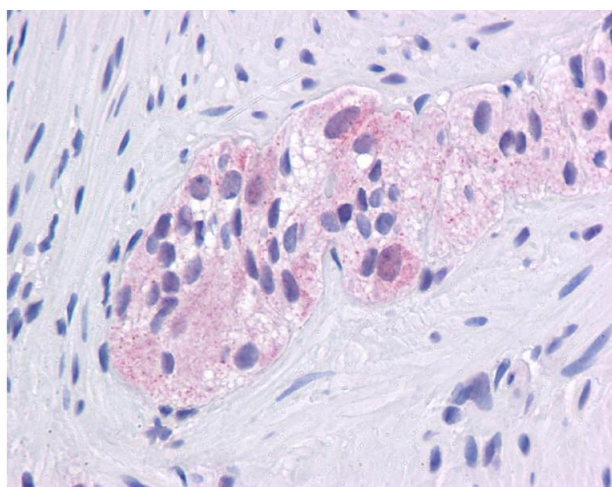
Preservative:	Sodium azide
Precaution of Use:	This product contains Sodium azide: a POISONOUS AND HAZARDOUS SUBSTANCE which should be handled by trained staff only.
Handling Advice:	Avoid repeated freeze-thaw cycles.
Storage:	-20 °C
Storage Comment:	For short term use, store at 2-8°C up to 1 week. For long term storage, store at -20°C in small aliquots to prevent freeze-thaw cycles.

Publications

Product cited in: Holmberg, Ingner, Johansson, Leander, Hjalt: "PITX2 gain-of-function induced defects in mouse forelimb development." in: **BMC developmental biology**, Vol. 8, pp. 25, (2008) ([PubMed](#)).

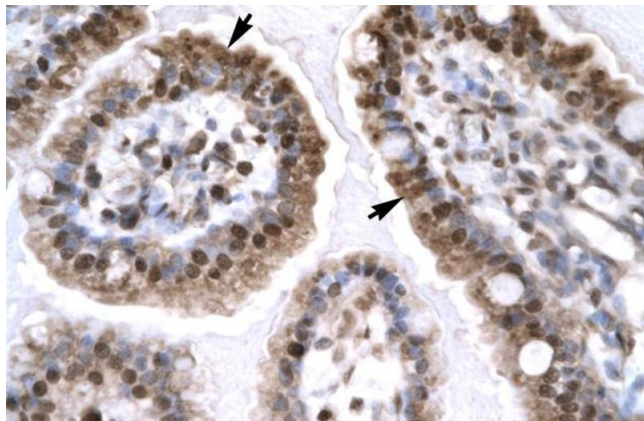
There are more publications referencing this product on: [Product page](#)

Images



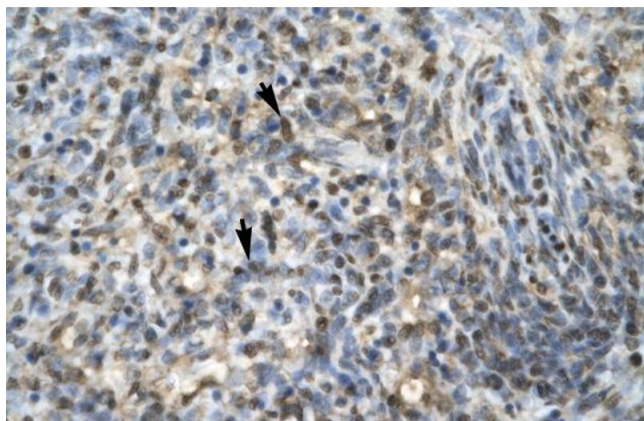
Immunohistochemistry

Image 1. Immunohistochemistry with Colon, myenteric plexus tissue at an antibody concentration of 5.0ug/ml using anti-EGR1 antibody (ARP32241_P050)



Immunohistochemistry

Image 2. Rabbit Anti-EGR1 Antibody Catalog Number: ARP32241 Paraffin Embedded Tissue: Human Intestine Cellular Data: Epithelial cells of intestinal villas Antibody Concentration: 4.0-8.0 ug/ml Magnification: 400X



Immunohistochemistry

Image 3. Rabbit Anti-EGR1 Antibody Catalog Number: ARP32241 Paraffin Embedded Tissue: Human Spleen Cellular Data: Spleen cells Antibody Concentration: 4.0-8.0 ug/ml Magnification: 400X

Please check the [product details page](#) for more images. Overall 4 images are available for ABIN2779517.