

Datasheet for ABIN2779525
anti-NR2F6 antibody (N-Term)[Go to Product page](#)

4 Images

Overview

Quantity:	100 µL
Target:	NR2F6
Binding Specificity:	N-Term
Reactivity:	Human, Mouse, Rat, Dog, Cow, Guinea Pig
Host:	Rabbit
Clonality:	Polyclonal
Conjugate:	This NR2F6 antibody is un-conjugated
Application:	Western Blotting (WB), Immunohistochemistry (IHC)

Product Details

Immunogen:	The immunogen is a synthetic peptide directed towards the N terminal region of human NR2F6
Sequence:	MAMVTGGWGG PGGDTNGVDK AGGYPRAAED DSASPPGAAS DAEPGDEERP
Predicted Reactivity:	Cow: 93%, Dog: 93%, Guinea Pig: 93%, Human: 100%, Mouse: 87%, Rat: 87%
Characteristics:	This is a rabbit polyclonal antibody against NR2F6. It was validated on Western Blot using a cell lysate as a positive control.
Purification:	Affinity Purified

Target Details

Target:	NR2F6
Alternative Name:	NR2F6 (NR2F6 Products)

Target Details

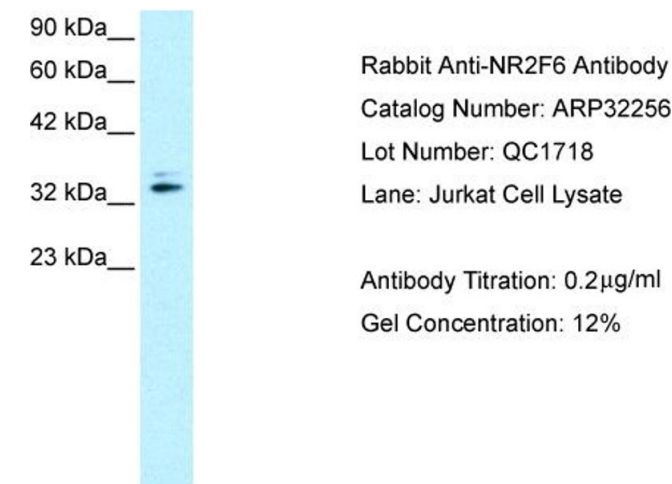
Background:	NR2F6 is a nuclear orphan receptor that belongs to the COUP-TF subfamily Alias Symbols: EAR2, EAR-2, ERBAL2 Protein Interaction Partner: NSD1, BCL11A, CBX1, NAP1L1, UBC, TFAP4, NR2F2, THRB, ANGPTL1, NCOA1, NR3C1, ESR1, NR2F6, RARG, RXRA, Protein Size: 404
Molecular Weight:	43 kDa
Gene ID:	2063
NCBI Accession:	NM_005234 , NP_005225
UniProt:	P10588
Pathways:	Nuclear Receptor Transcription Pathway , Steroid Hormone Mediated Signaling Pathway , Photoperiodism

Application Details

Application Notes:	Optimal working dilutions should be determined experimentally by the investigator.
Comment:	Antigen size: 404 AA
Restrictions:	For Research Use only

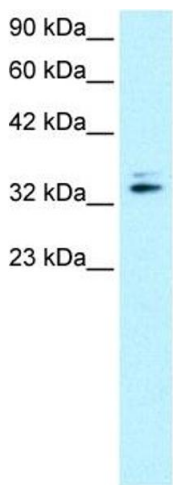
Handling

Format:	Liquid
Concentration:	Lot specific
Buffer:	Liquid. Purified antibody supplied in 1x PBS buffer with 0.09 % (w/v) sodium azide and 2 % sucrose.
Preservative:	Sodium azide
Precaution of Use:	This product contains Sodium azide: a POISONOUS AND HAZARDOUS SUBSTANCE which should be handled by trained staff only.
Handling Advice:	Avoid repeated freeze-thaw cycles.
Storage:	-20 °C
Storage Comment:	For short term use, store at 2-8°C up to 1 week. For long term storage, store at -20°C in small aliquots to prevent freeze-thaw cycles.



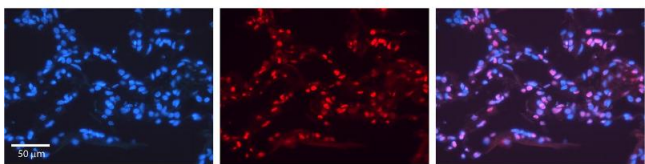
Western Blotting

Image 1.



Western Blotting

Image 2. WB Suggested Anti-NR2F6 Antibody Titration: 0.2 µg/ml Positive Control: Jurkat Whole Cell



Immunohistochemistry

Image 3. NR2F6 antibody - N-terminal region Formalin Fixed Paraffin Embedded Tissue: Human Lung Tissue Observed Staining: Nucleus of pneumocytes Primary Antibody Concentration: 1:100 Other Working Concentrations: 1/600 Secondary Antibody: Donkey anti-Rabbit-Cy3 Secondary Antibody Concentration: 1:200 Magnification: 20X Exposure Time: 0.5 - 2.0 sec

Please check the [product details page](#) for more images. Overall 4 images are available for ABIN2779525.