

Datasheet for ABIN2779532  
**anti-NR2E3 antibody (Middle Region)**

## 3 Images

[Go to Product page](#)

## Overview

Quantity:	100 µL
Target:	NR2E3
Binding Specificity:	Middle Region
Reactivity:	Human, Mouse, Rat, Cow, Horse, Guinea Pig, Zebrafish (Danio rerio)
Host:	Rabbit
Clonality:	Polyclonal
Conjugate:	This NR2E3 antibody is un-conjugated
Application:	Western Blotting (WB)

## Product Details

Immunogen:	The immunogen is a synthetic peptide directed towards the middle region of Human NR2E3
Sequence:	ARALGHHFMA SLITAETCAK LEPEDADENI DVTSNDPEFP SSPYSSSSPC
Predicted Reactivity:	Cow: 100%, Guinea Pig: 93%, Horse: 100%, Human: 100%, Mouse: 93%, Rat: 93%, Zebrafish: 93%
Characteristics:	This is a rabbit polyclonal antibody against NR2E3. It was validated on Western Blot.
Purification:	Affinity Purified

## Target Details

Target:	NR2E3
Alternative Name:	NR2E3 ( <a href="#">NR2E3 Products</a> )
Background:	This protein is part of a large family of nuclear receptor transcription factors involved in

## Target Details

signaling pathways. Nuclear receptors have been shown to regulate pathways involved in embryonic development, as well as in maintenance of proper cell function in adults. Members of this family are characterized by discrete domains that function in DNA and ligand binding. This gene encodes a retinal nuclear receptor that is a ligand-dependent transcription factor. Defects in this gene are a cause of enhanced S cone syndrome. Alternatively spliced transcript variants encoding different isoforms have been identified.

Alias Symbols: ESCS, PNR, RNR, RP37, rd7

Protein Interaction Partner: BCL11A, SIN3A, DHX30, TBL3, MYBBP1A, NCOR1, HDAC3, RBL1, RBBP7, RBBP4, HDAC1, CDK9, VDR, DEDD2, RBFOX2, IRF9, ZNF232, SNAPC1, PPARG, HOXC13, NR3C1, ELAVL2, POLR3D, RARA, NR1D1, CRX, RXRB, RXRA,

Protein Size: 367

Molecular Weight: 40 kDa

Gene ID: 10002

NCBI Accession: [NM\\_016346](#), [NP\\_057430](#)

Pathways: [Nuclear Receptor Transcription Pathway](#), [Steroid Hormone Mediated Signaling Pathway](#)

## Application Details

Restrictions: For Research Use only

## Handling

Format: Liquid

Concentration: 1 mg/mL

Buffer: Liquid. Purified antibody supplied in 1x PBS buffer with 0.09 % (w/v) sodium azide and 2 % sucrose.

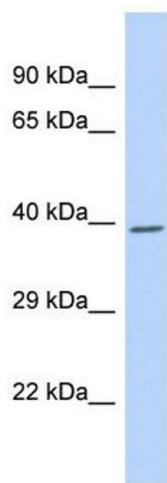
Preservative: Sodium azide

Precaution of Use: This product contains Sodium azide: a POISONOUS AND HAZARDOUS SUBSTANCE which should be handled by trained staff only.

Handling Advice: Avoid repeat freeze-thaw cycles.

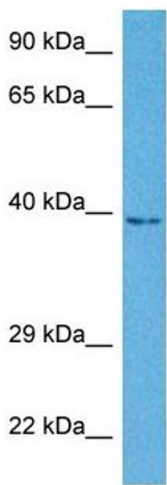
Storage: -20 °C

Storage Comment: For short term use, store at 2-8°C up to 1 week. For long term storage, store at -20°C in small aliquots to prevent freeze-thaw cycles.



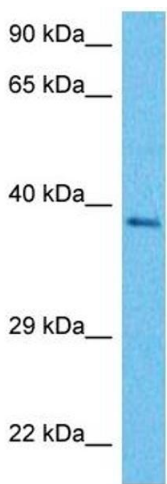
Western Blotting

**Image 1.** Host: Rabbit Target Name: NR2E3 Sample Type: Fetal Heart lysates Antibody Dilution: 1.0ug/ml



Western Blotting

**Image 2.** Host: Rabbit Target Name: NR2E3 Sample Tissue: Human A549 Whole Cell Antibody Dilution: 1ug/ml



Western Blotting

**Image 3.** Host: Rabbit Target Name: NR2E3 Sample Tissue: Human Jurkat Whole Cell Antibody Dilution: 1ug/ml