

Datasheet for ABIN2779540  
**anti-PQBP1 antibody (Middle Region)**[Go to Product page](#)

## 2 Images

## Overview

Quantity:	100 µL
Target:	PQBP1
Binding Specificity:	Middle Region
Reactivity:	Human, Rat, Cow, Dog, Horse, Rabbit, Guinea Pig
Host:	Rabbit
Clonality:	Polyclonal
Conjugate:	This PQBP1 antibody is un-conjugated
Application:	Western Blotting (WB)

## Product Details

Immunogen:	The immunogen is a synthetic peptide directed towards the middle region of human PQBP1
Sequence:	LVSWLSPHDP NSVVTKSARK LRSSNADAEK KLDRSHDKSD RGHDKSDRSH
Predicted Reactivity:	Cow: 100%, Dog: 100%, Guinea Pig: 100%, Horse: 100%, Human: 100%, Rabbit: 93%, Rat: 100%
Characteristics:	This is a rabbit polyclonal antibody against PQBP1. It was validated on Western Blot using a cell lysate as a positive control.
Purification:	Affinity Purified

## Target Details

Target:	PQBP1
Alternative Name:	PQBP1 ( <a href="#">PQBP1 Products</a> )

## Target Details

Background:	<p>PQBP1 is a nuclear polyglutamine-binding protein that contains a WW domainPQBP1 is a nuclear polyglutamine-binding protein that contains a WW domain (Waragai et al., 1999 [PubMed 10332029]).[supplied by OMIM].</p> <p>Alias Symbols: MRX55, MRXS3, MRXS8, NPW38, RENS1, SHS</p> <p>Protein Interaction Partner: MAPRE1, GOLGA2, LZTS2, UBC, APBB1, WDR77, AQR, HNRNPH2, MRPL53, SLIRP, SRPRB, SUGP1, MRPS28, RPS6KA6, HRSP12, SCO2, ZC3H11A, UBL4A, VDAC3, RRBP1, RPS28, RBMS1, NDUFA7, IDH3G, APP, WBP11, RCVRN, LNX1, SF3A2, SFTPC, TXNL4A, TLX3, LRIF1, MED31, POLR2A, C14orf</p> <p>Protein Size: 265</p>
Molecular Weight:	30 kDa
Gene ID:	10084
NCBI Accession:	<a href="#">NM_001032383</a> , <a href="#">NP_001027555</a>
UniProt:	<a href="#">O60828</a>
Pathways:	<a href="#">Ribonucleoprotein Complex Subunit Organization</a>

## Application Details

Application Notes:	Optimal working dilutions should be determined experimentally by the investigator.
Comment:	Antigen size: 265 AA
Restrictions:	For Research Use only

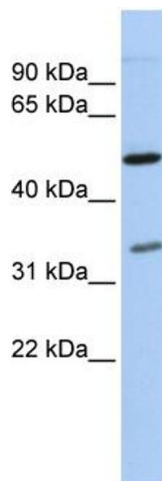
## Handling

Format:	Liquid
Concentration:	Lot specific
Buffer:	Liquid. Purified antibody supplied in 1x PBS buffer with 0.09 % (w/v) sodium azide and 2 % sucrose.
Preservative:	Sodium azide
Precaution of Use:	This product contains Sodium azide: a POISONOUS AND HAZARDOUS SUBSTANCE which should be handled by trained staff only.
Handling Advice:	Avoid repeated freeze-thaw cycles.
Storage:	-20 °C

## Handling

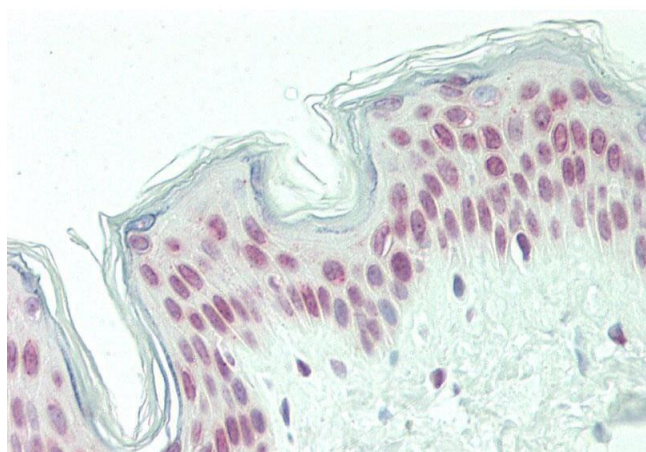
Storage Comment: For short term use, store at 2-8°C up to 1 week. For long term storage, store at -20°C in small aliquots to prevent freeze-thaw cycles.

## Images



### Western Blotting

**Image 1.** WB Suggested Anti-PQBP1 Antibody Titration: 0.2-1 ug/ml ELISA Titer: 1:62500 Positive Control: OVCAR-3 cell lysate



### Immunohistochemistry

**Image 2.** Rabbit Anti-PQBP1 antibody Formalin Fixed Paraffin Embedded Tissue: Human Skin Primary antibody Concentration: 1:100 Secondary Antibody: Donkey anti-Rabbit-Cy3 Secondary Antibody Concentration: 1:200 Magnification: 20x Exposure Time: 0.5-2.0sec