

Datasheet for ABIN2779541  
**anti-ZFHX2 antibody (Middle Region)**[Go to Product page](#)

## 2 Images

## Overview

Quantity:	100 µL
Target:	ZFHX2
Binding Specificity:	Middle Region
Reactivity:	Human, Mouse, Dog, Rat, Cow, Guinea Pig, Horse, Rabbit
Host:	Rabbit
Clonality:	Polyclonal
Conjugate:	This ZFHX2 antibody is un-conjugated
Application:	Western Blotting (WB), Immunohistochemistry (IHC)

## Product Details

Immunogen:	The immunogen is a synthetic peptide directed towards the middle region of human ZNF409
Sequence:	GGQGSPPEAS LPPSAGDKEP KTKSSWQCKV CSYETNISRN LRIHMTSEKH
Predicted Reactivity:	Cow: 92%, Dog: 100%, Guinea Pig: 100%, Horse: 93%, Human: 100%, Mouse: 87%, Rabbit: 93%, Rat: 86%
Characteristics:	This is a rabbit polyclonal antibody against ZNF409. It was validated on Western Blot and immunohistochemistry.
Purification:	Affinity Purified

## Target Details

Target:	ZFHX2
---------	-------

## Target Details

Alternative Name:	ZNF409 ( <a href="#">ZFHx2 Products</a> )
Background:	ZNF209 is a candidate transcription factor Protein Size: 862
Molecular Weight:	92 kDa
Gene ID:	22830
NCBI Accession:	<a href="#">XM_375065</a> , <a href="#">XP_375065</a>
UniProt:	<a href="#">Q9UPU6</a>

## Application Details

Application Notes:	Optimal working dilutions should be determined experimentally by the investigator.
Comment:	Antigen size: 862 AA
Restrictions:	For Research Use only

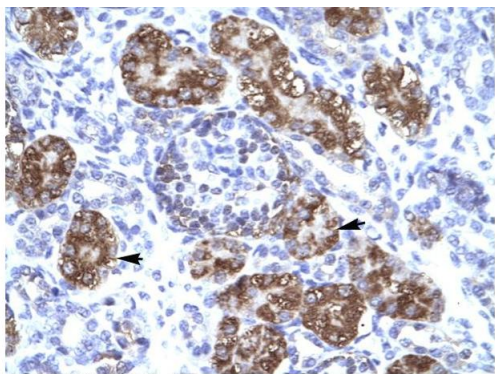
## Handling

Format:	Liquid
Concentration:	Lot specific
Buffer:	Liquid. Purified antibody supplied in 1x PBS buffer with 0.09 % (w/v) sodium azide and 2 % sucrose.
Preservative:	Sodium azide
Precaution of Use:	This product contains Sodium azide: a POISONOUS AND HAZARDOUS SUBSTANCE which should be handled by trained staff only.
Handling Advice:	Avoid repeated freeze-thaw cycles.
Storage:	-20 °C
Storage Comment:	For short term use, store at 2-8°C up to 1 week. For long term storage, store at -20°C in small aliquots to prevent freeze-thaw cycles.



### Western Blotting

**Image 1.** WB Suggested Anti-ZNF409 Antibody Titration:  
0.2-1 ug/ml Positive Control: Jurkat cell lysate



### Immunohistochemistry

**Image 2.** Human kidney

Rabbit Anti-ZNF409 Antibody  
Catalog Number: ARP32282  
Lot Number: QC1740  
Paraffin Embedded Tissue: Human Kidney  
Cells with Positive label: Epithelial cells of renal tubule (Indicated with Arrows)  
Antibody Concentration: 4.0-8.0 µg/ml  
Magnification: 400X