

Datasheet for ABIN2779550  
**anti-FOXF1 antibody (C-Term)**[Go to Product page](#)

3 Images

2 Publications

## Overview

Quantity:	100 µL
Target:	FOXF1
Binding Specificity:	C-Term
Reactivity:	Human, Mouse, Cow, Rabbit, Guinea Pig, Horse, Rat, Dog
Host:	Rabbit
Clonality:	Polyclonal
Conjugate:	This FOXF1 antibody is un-conjugated
Application:	Western Blotting (WB), Immunohistochemistry (IHC)

## Product Details

Immunogen:	The immunogen is a synthetic peptide directed towards the C terminal region of human FOXF1
Sequence:	PCNPAANPLS GSLSTHSLEQ PYLHQNSHNA PAELQGIPRY HSQSPSMCDR
Predicted Reactivity:	Cow: 92%, Dog: 92%, Guinea Pig: 92%, Horse: 100%, Human: 100%, Mouse: 92%, Rabbit: 100%, Rat: 92%
Characteristics:	This is a rabbit polyclonal antibody against FOXF1. It was validated on Western Blot and immunohistochemistry.
Purification:	Protein A purified

## Target Details

Target:	FOXF1
---------	-------

## Target Details

Alternative Name:	FOXF1 ( <a href="#">FOXF1 Products</a> )
Background:	<p>This gene belongs to the forkhead family of transcription factors which is characterized by a distinct forkhead domain. The specific function of this gene has not yet been determined, however, it may play a role in the regulation of pulmonary genes as well as embryonic development.</p> <p>Alias Symbols: FKHL5, ACDMPV, FREAC1</p> <p>Protein Size: 354</p>
Molecular Weight:	38 kDa
Gene ID:	2294
NCBI Accession:	<a href="#">NM_001451</a> , <a href="#">NP_001442</a>
UniProt:	<a href="#">Q12946</a>
Pathways:	<a href="#">Regulation of Leukocyte Mediated Immunity</a> , <a href="#">Regulation of Muscle Cell Differentiation</a> , <a href="#">Positive Regulation of Immune Effector Process</a>

## Application Details

Application Notes:	Optimal working dilutions should be determined experimentally by the investigator.
Comment:	Antigen size: 354 AA
Restrictions:	For Research Use only

## Handling

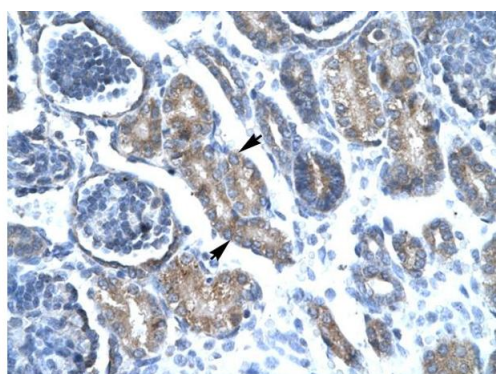
Format:	Liquid
Concentration:	Lot specific
Buffer:	Liquid. Purified antibody supplied in 1x PBS buffer with 0.09 % (w/v) sodium azide and 2 % sucrose.
Preservative:	Sodium azide
Precaution of Use:	This product contains Sodium azide: a POISONOUS AND HAZARDOUS SUBSTANCE which should be handled by trained staff only.
Handling Advice:	Avoid repeated freeze-thaw cycles.
Storage:	-20 °C
Storage Comment:	For short term use, store at 2-8°C up to 1 week. For long term storage, store at -20°C in small

aliquots to prevent freeze-thaw cycles.

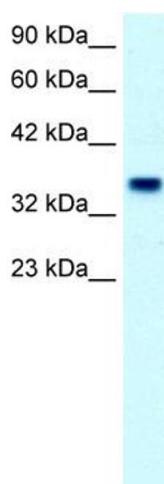
## Publications

Product cited in: Sugatani, Nishitani, Yamakawa, Yoshinari, Sueyoshi, Negishi, Miwa: "Transcriptional regulation of human UGT1A1 gene expression: activated glucocorticoid receptor enhances constitutive androstane receptor/pregnane X receptor-mediated UDP-glucuronosyltransferase 1A1 regulation with glucocorticoid receptor-interacting protei" in: **Molecular pharmacology**, Vol. 67, Issue 3, pp. 845-55, (2005) ([PubMed](#)).

## Images



Rabbit Anti-FOXF1 Antibody  
Catalog Number: ARP32296  
Lot Number: QC1751  
Paraffin Embedded Tissue: Human Kidney  
Cells with Positive label: Epithelial cells of renal tubule (Indicated with Arrows)  
Antibody Concentration: 4.0-8.0 µg/ml  
Magnification: 400X



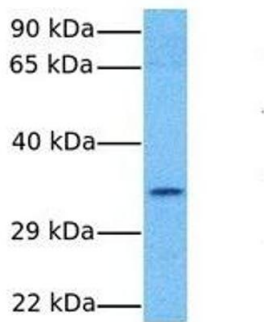
### Immunohistochemistry

**Image 1.** Human kidney

### Western Blotting

**Image 2.** WB Suggested Anti-FOXF1 Antibody Titration:  
2.5ug/ml Positive Control: Human Placenta

# FOXF1



## Western Blotting

**Image 3.** Host: Rabbit Target Name: FOXF1 Sample Tissue:  
Human Hela Antibody Dilution: 1.0ug/ml