

Datasheet for ABIN2779551
anti-SCMH1 antibody (Middle Region)

3 Images

[Go to Product page](#)

Overview

Quantity:	100 µL
Target:	SCMH1
Binding Specificity:	Middle Region
Reactivity:	Human, Mouse, Rat, Cow, Rabbit, Dog, Horse, Saccharomyces cerevisiae, Guinea Pig, Zebrafish (Danio rerio)
Host:	Rabbit
Clonality:	Polyclonal
Conjugate:	This SCMH1 antibody is un-conjugated
Application:	Western Blotting (WB)

Product Details

Immunogen:	The immunogen is a synthetic peptide directed towards the middle region of human SCMH1
Sequence:	KTAEPLKFPK KRGPKPGSKR KPRTLNNPPP ASPTTSTPEP DTSTVPQDAA
Predicted Reactivity:	Cow: 100%, Dog: 100%, Guinea Pig: 100%, Horse: 100%, Human: 100%, Mouse: 100%, Rabbit: 100%, Rat: 100%, Yeast: 91%, Zebrafish: 92%
Characteristics:	This is a rabbit polyclonal antibody against SCMH1. It was validated on Western Blot using a cell lysate as a positive control.
Purification:	Affinity Purified

Target Details

Target:	SCMH1
---------	-------

Target Details

Alternative Name:	SCMH1 (SCMH1 Products)
Background:	<p>SCMH1 is a component of the Polycomb group (PcG) multiprotein PRC1 complex, a complex required to maintain the transcriptionally repressive state of many genes, including Hox genes, throughout development. PcG PRC1 complex acts via chromatin remodeling and modification of histones, it mediates monoubiquitination of histone H2A 'Lys-119', rendering chromatin heritably changed in its expressibility.</p> <p>Alias Symbols: Scml3</p> <p>Protein Interaction Partner: UBQLN1, RNF2, MAGEA12, BMI1, UBQLN4, PHC3, CBX4, PCGF2, PHC2, PHC1, MAML3, LZTR1, PCBD1, EWSR1, TMEM11, SCMH1, MOB4, TOB1, POLR2M, LYPLA2, GMNN, HK1, Cbx2,</p> <p>Protein Size: 591</p>
Molecular Weight:	65 kDa
Gene ID:	22955
NCBI Accession:	NM_012236 , NP_036368

Application Details

Application Notes:	Optimal working dilutions should be determined experimentally by the investigator.
Comment:	Antigen size: 591 AA
Restrictions:	For Research Use only

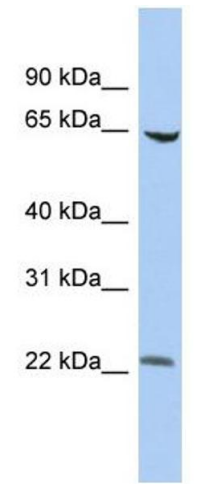
Handling

Format:	Liquid
Concentration:	Lot specific
Buffer:	Liquid. Purified antibody supplied in 1x PBS buffer with 0.09 % (w/v) sodium azide and 2 % sucrose.
Preservative:	Sodium azide
Precaution of Use:	This product contains Sodium azide: a POISONOUS AND HAZARDOUS SUBSTANCE which should be handled by trained staff only.
Handling Advice:	Avoid repeated freeze-thaw cycles.
Storage:	-20 °C

Handling

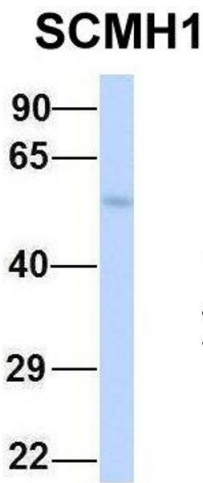
Storage Comment: For short term use, store at 2-8°C up to 1 week. For long term storage, store at -20°C in small aliquots to prevent freeze-thaw cycles.

Images



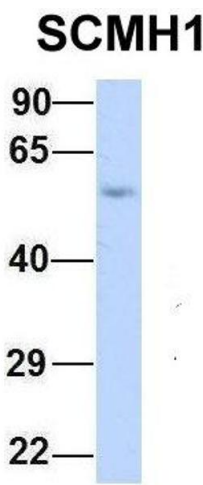
Western Blotting

Image 1. WB Suggested Anti-SCMH1 Antibody Titration: 0.2-1 ug/ml ELISA Titer: 1:62500 Positive Control: HT1080 cell lysate



Western Blotting

Image 2. Host: Rabbit Target Name: SCM1 Sample Type: Human Fetal Lung Antibody Dilution: 1.0ug/ml



Western Blotting

Image 3. Host: Rabbit Target Name: SCM1 Sample Type: Human Fetal Heart Antibody Dilution: 1.0ug/ml