

Datasheet for ABIN2779555  
**anti-FOXL1 antibody (N-Term)**

## 3 Images

[Go to Product page](#)

## Overview

Quantity:	100 µL
Target:	FOXL1
Binding Specificity:	N-Term
Reactivity:	Human, Mouse, Cow, Dog, Pig, Rat, Horse, Rabbit
Host:	Rabbit
Clonality:	Polyclonal
Conjugate:	This FOXL1 antibody is un-conjugated
Application:	Western Blotting (WB), Immunohistochemistry (IHC)

## Product Details

Immunogen:	The immunogen is a synthetic peptide directed towards the N terminal region of human FOXL1
Sequence:	HLFDPRLPAL AASPMLYLYG PERPGLPLAF APAAALAASG RAETPQKPPY
Predicted Reactivity:	Cow: 100%, Dog: 100%, Horse: 100%, Human: 100%, Mouse: 86%, Pig: 100%, Rabbit: 92%, Rat: 86%
Characteristics:	This is a rabbit polyclonal antibody against FOXL1. It was validated on Western Blot and immunohistochemistry.
Purification:	Protein A purified

## Target Details

Target:	FOXL1
---------	-------

## Target Details

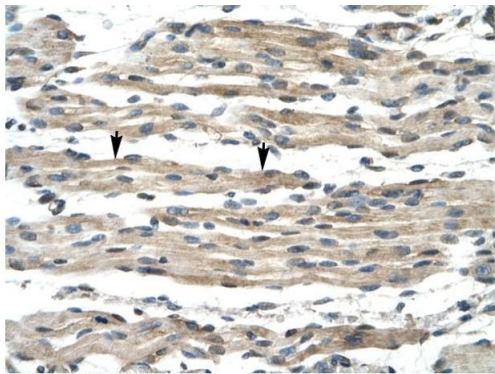
Alternative Name:	FOXL1 ( <a href="#">FOXL1 Products</a> )
Background:	<p>FOXL1 is a member of the forkhead family. The forkhead domain is a monomeric DNA binding motif that defines a rapidly growing family of eukaryotic transcriptional regulators. Genetic and biochemical data suggest a central role in embryonic development for forkhead proteins.</p> <p>Alias Symbols: FKH6, FKHL11, FREAC7</p> <p>Protein Interaction Partner: BMPR2,</p> <p>Protein Size: 345</p>
Molecular Weight:	36 kDa
Gene ID:	2300
NCBI Accession:	<a href="#">NM_005250</a> , <a href="#">NP_005241</a>
UniProt:	<a href="#">Q12952</a>

## Application Details

Application Notes:	Optimal working dilutions should be determined experimentally by the investigator.
Comment:	Antigen size: 345 AA
Restrictions:	For Research Use only

## Handling

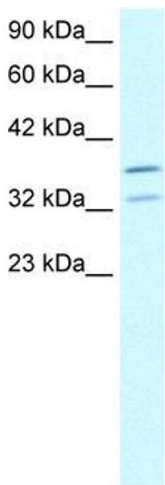
Format:	Liquid
Concentration:	Lot specific
Buffer:	Liquid. Purified antibody supplied in 1x PBS buffer with 0.09 % (w/v) sodium azide and 2 % sucrose.
Preservative:	Sodium azide
Precaution of Use:	This product contains Sodium azide: a POISONOUS AND HAZARDOUS SUBSTANCE which should be handled by trained staff only.
Handling Advice:	Avoid repeated freeze-thaw cycles.
Storage:	-20 °C
Storage Comment:	For short term use, store at 2-8°C up to 1 week. For long term storage, store at -20°C in small aliquots to prevent freeze-thaw cycles.



Rabbit Anti-FOXL1 Antibody  
Catalog Number: ARP32303  
Lot Number: QC1757  
Paraffin Embedded Tissue: Human Muscle  
Cells with Positive label: Skeletal muscle cells (Indicated with Arrows)  
Antibody Concentration: 4.0-8.0 µg/ml  
Magnification: 400X

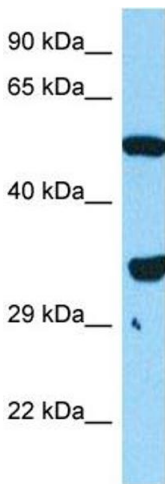
### Immunohistochemistry

**Image 1.** Human Muscle



### Western Blotting

**Image 2.** WB Suggested Anti-FOXL1 Antibody Titration:  
2.5ug/ml Positive Control: Human Liver



### Western Blotting

**Image 3.** Host: Mouse Target Name: FOXL1 Sample Tissue:  
Mouse Skeletal Muscle Antibody Dilution: 1ug/ml